



**Ontario Clean Water Agency**  
**Agence Ontarienne Des Eaux**

**Bruce Mines  
Lagoon**

**Annual Operating Report**

January 1, 2012 to December 31, 2012

March 06, 2013

Ministry of the Environment  
289 Bay Street, 3<sup>rd</sup> Floor  
Sault Ste. Marie, Ontario  
P6A 1W7

**SUBJECT: Bruce Mines Lagoon  
Bruce Mines, ON  
Certificate of Approval (C of A) #3-0019-90-006  
2012 Annual Report**

*i) An executive summary;*

The enclosed 2012 Report for the above-referenced facility summarizes the performance and related activities in accordance with Certificate of Approval #3-0019-90-006; Section 7.3 ii) through vi) as follows:

*ii) A tabulation of all sample results including how and where the sample was taken;*

**Monitoring Program as per above-referenced C of A:**

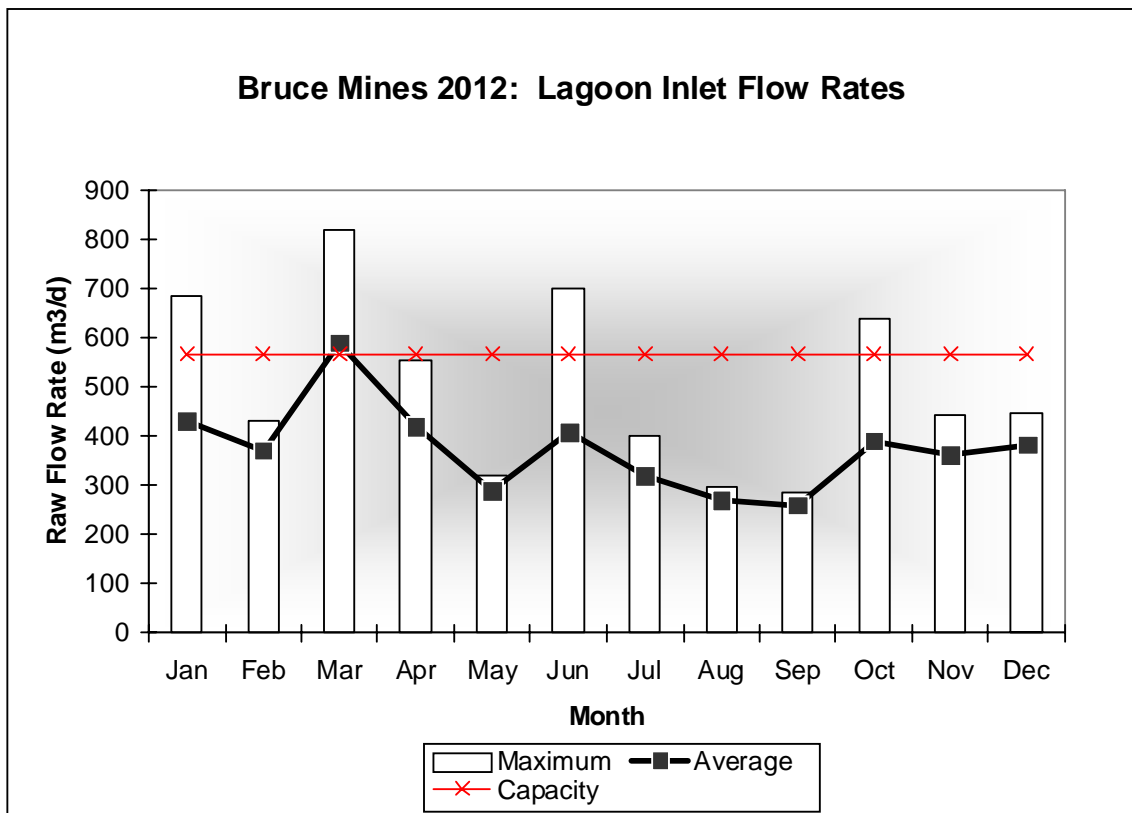
Source (Grab)	Parameter	Frequency	Method
Influent	Flow (m3)	Daily	Flow Meter
	BOD <sub>5</sub> , TSS, TP	Monthly	External Analysis
Effluent	Flow (m3)	Daily	Estimated
During Discharge	BOD <sub>5</sub> , TSS, TP, H <sub>2</sub> S	Every 0.5 m	External Analysis
	NH <sub>3</sub> +NH <sub>4</sub> (Ammonia)	Every 0.5 m	External Analysis

Based on the above monitoring program, the sewage works provided adequate treatment within the required average daily flows while providing a quality effluent. All analytical results for the 2012 reporting period are attached as Appendix A in the Monthly PDC where lab results are automatically uploaded to our PDC program. A copy of the Certificate of Approval is attached under Appendix C.

iii) A tabulation of volumes, including average daily flows for periods reported;

**2012 Monthly Flow Summary**

Month	Monthly Total Flow (m3)	Average Daily Flow (m3/d)	Peak Daily Flow (m3/d)	Discharge Flow (m3)
January	13,405.5	432.4	684.6	
February	10,769.3	371.4	430.2	
March	18,315.7	590.8	819.9	
April	12,604.5	420.2	554.5	
May	8,293.4	287.9	323.1	73,299
June	12,263.8	408.8	700.9	
July	9,923.5	320.1	400.0	
August	8,348.2	269.3	298.7	
September	7,788.2	259.6	284.8	
October	12,109.4	390.6	637.2	
November	10,900.0	363.3	443.9	48,185
December	11,881.6	383.3	449.4	
<b>Summary</b>		<b>375.0</b>	<b>819.9</b>	
<b>2012 TOTAL</b>	<b>137,233.1</b>			<b>121,484</b>



Flows measured into the lagoon did exceed the specified average daily flow of 567.0 m<sup>3</sup>/day in January, March and June of 2012. Compliance with the C of A was achieved due to the fact that the exceeded flows did not occur for 183 consecutive days at any point in 2012. The average daily flow for 2012 was 375m<sup>3</sup>/d and is approximately 66% of the rated capacity. The highest recorded peak flow occurred in March, 820 m<sup>3</sup>/d and is approximately 145% of the rated capacity.

*iv) A comprehensive interpretation of the sewage works effluent concentrations data for the reporting period;*

### 2012 Raw/Effluent Quality Data

Source	Parameter	Average	Max	Min	Compliance
Raw	TSS (mg/L)	103.3	202.0	41.0	
	TP (mg/L)	1.93	3.69	0.94	
	BOD5 (mg/L)	92.8	158	44	
Effluent (1)	BOD5 (mg/L)	4.83	12.0	2.0	25.0 (Monthly)
	TSS (mg/L)	5.33	10.0	2.0	25.0 (Monthly)
	TP (mg/L)	1.01	1.93	0.25	
	Ammonia (mg/L)	1.78	2.80	0.10	
	H <sub>2</sub> S (mg/L)	<0.02	<0.02	<0.02	
	BOD5 (Kg/d)	17.13	68.27	1.42	259 Kg/d
	TSS (Kg/d)	19.02	56.89	2.84	259 Kg/d
Effluent (2)	BOD5 (mg/L)	5.67	10.0	4.0	25.0 (Monthly)
	TSS (mg/L)	10.83	31.0	3.0	25.0 (Monthly)
	TP (mg/L)	10.2	1.74	0.54	
	Ammonia (mg/L)	1.89	3.5	0.4	
	H <sub>2</sub> S (mg/L)	<0.02	<0.02	<0.02	
	BOD5 (Kg/d)	22.77	40.72	6.79	259 Kg/d
	TSS (Kg/d)	39.1	105.21	5.09	259 Kg/d

The average concentrations for the above parameters were within the compliance limits specified in the facility C of A. Refer to Appendix A for the monthly and annual summary of the above sampling data including loading calculations.

***A summary of any effluent quality assurance or control measures undertaken during the reporting period;***

The effluent parameters specified in the above table are analyzed by SGS Lakefield Research, an accredited laboratory located in Lakefield, Ontario.

In-house tests are conducted by licensed Operators for monitoring purposes using Standard Methods and the data generated from these tests is used to determine the treatment efficiency while maintaining process control. All in-house monitoring equipment is calibrated based on the manufactures recommendations.

***v) An overview of the sludge disposal program including tabulation of quantity of sludge and the disposal areas used during the period being reported upon, together with an outline of the proposed sludge handling methods and disposal areas to be utilized over the next reporting period;***

There was no sludge removed from the lagoon for this reporting period. It is projected that there will be no sludge removed from the lagoon for the next reporting period.

***vi) A description of any emergency or upset conditions which occurred during the period being reported upon;***

There were no upset conditions to report in 2012.

***A summary of all maintenance carried out on any major structure, equipment, apparatus, mechanism or thing forming a part of the works;***

Plant maintenance, including non-scheduled maintenance is monitored using the Hansen Preventative Maintenance software program. See Appendix B for a summary. All routine and preventative maintenance was conducted as scheduled in 2012.

***An account of any environmental and operating problems encountered at the site of the sewage treatment plant and the mitigative measures taken during the reporting period;***

There were no environmental or operating problems encountered during 2012.

***A summary of any alterations, extensions or replacements in the process or operations of the works which are considered for implementation over the next reporting period, especially those which may require approval under the Ontario Water Resources Act;***

Replacements and improvements were conducted in 2012 as follows:

1. New hour meters installed for Prout & Taylor Lift Stations \$1695
2. Labor – High level @ main SPS \$1200
3. Emergency vacter truck - \$1854
4. Flush & vacter sewage lift station \$722

There were no major connections added or removed during 2012.

There are not any alterations, extensions or replacements in the forecast for the next reporting period.

There has not been an MOE inspection since October 9, 2009 which was included in the last reporting period.

Best Regards,

A handwritten signature in black ink, appearing to read "Dan Clark", is centered on a light gray rectangular background.

Dan Clark  
Process & Compliance Technician  
Espanola Hub  
c.c. Donna Brunke, Town of Bruce Mine

## **Appendix A**

# **Performance Assessment Report & Monthly Process Data Report**



# Ontario Clean Water Agency Performance Assessment Report Wastewater/Lagoon

From 01/01/2012 to 12/31/2012

Facility: [5934] - Bruce Mines Wastewater Treatment Plant & Collection System  
Works: [110001756] - Bruce Mines Wastewater Treatment Plant & Collection System

	01/2012	02/2012	03/2012	04/2012	05/2012	06/2012	07/2012	08/2012	09/2012	10/2012	11/2012	12/2012	<-- Total -->	<-- Avg. -->	<-- Max. -->	<-- Criteria-->
<b>Flow:</b>																
Raw: Total Flow 1000 m3	13.406	10.769	18.316	12.605	8.923	12.264	9.923	8.348	7.788	12.109	10.9	11.882	137.233			
Raw: Avg. Day Flow 1000 m3/day	0.432	0.371	0.591	0.42	0.288	0.409	0.32	0.269	0.26	0.391	0.363	0.383		0.375		
Raw: Max. Day Flow 1000 m3/day	0.685	0.43	0.82	0.554	0.323	0.701	0.4	0.299	0.285	0.637	0.444	0.449			0.82	
Eff: Total Flow 1000 m3					73.299						48.185		121.484			
Eff: Avg. Day Flow 1000 m3/day					4.887						3.012			3.919		
Eff: Max. Day Flow 1000 m3/day					8.209						4.267				8.209	
Discharge Duration (day/mnth)					15.0								15.0			
<b>Biochemical O2 Demand:</b>																
Raw: Avg. BOD5 (mg/L)	56.0	87.0	63.0	111.0	126.0	118.0	44.0	63.0	148.0	56.0	83.0	158.0		92.75	158.0	
Raw: Number of Samples BOD5	1.0	1.0	1.0	1.0	1.0	1.0	1.0	1.0	1.0	1.0	1.0	1.0	12.0			
Eff: Avg. BOD5 (mg/L)					5.077						5.455			5.266	12.0	25.0
Eff: Number of Samples BOD5					13.0						11.0		24.0			
BOD Loading (kg/d)					24.809						16.427			20.618	24.809	259.0
BOD5 Percent Removal					95.971						93.428				95.971	
<b>Suspended Solids:</b>																
Raw: Avg. SS (mg/L)	41.0	78.0	74.0	114.0	135.0	136.0	62.0	70.0	202.0	86.0	88.0	154.0		103.333	202.0	
Raw: Number of Samples SS	1.0	1.0	1.0	1.0	1.0	1.0	1.0	1.0	1.0	1.0	1.0	1.0	12.0			
Eff: Avg. SS (mg/L)					6.0						10.545			8.273	31.0	25.0
Eff: Number of Samples SS					13.0						11.0		24.0			
SS Loading (kg/d)					29.32						31.758			30.539	31.758	259.0
SS Percent Removal					95.556						88.017				95.556	
<b>Phosphorus:</b>																
Raw: Avg. Phos (mg/L)	1.14	1.83	1.13	0.94	2.04	3.15	0.98	1.98	3.36	1.21	1.75	3.69		1.933	3.69	

- Note: 1. The Total, Average, Max and Criteria summaries are not included in the wastewater XML files submitted to the MOE.  
2. The annual average concentrations are calculated by taking the arithmetic mean of the monthly average concentration in the effluent calculated for any particular calendar year.

Parameters List: OCWA PDC - MEWS

CBOD5 - Carbonaceous Biochemical Oxygen Demand 5 Day; BOD5 - Biochemical Oxygen Demand, 5 Day, Total Demand; Suspended Solids - Residue, Particulate; NH3 + NH4 as N - Ammonium + Ammonia, Total Unfil. React. ; Total Phosphorus - Phosphorus, Unfiltered Total  
TKN - Nitrogen, Total Kjeldahl Unf. Tot; Nitrate as N - Nitrate, Unfiltered Reactive; Nitrite as N - Nitrite, Unfiltered Reactive; E coli - Escherichia Coli MF

Legend:

Tag group:

Eff-Final Effluent Total, Eff1-Final Effluent 1, Eff2-Final Effluent 2, Raw-Raw Sewage





# Ontario Clean Water Agency Performance Assessment Report Wastewater/Lagoon

From 01/01/2012 to 12/31/2012

Facility: [5934] - Bruce Mines Wastewater Treatment Plant & Collection System  
Works: [110001756] - Bruce Mines Wastewater Treatment Plant & Collection System

	01/2012	02/2012	03/2012	04/2012	05/2012	06/2012	07/2012	08/2012	09/2012	10/2012	11/2012	12/2012	<-- Total -->	<-- Avg. -->	<-- Max. -->	<-- Criteria-->
<b>Phosphorus:</b>																
Raw: Number of Samples Phos	1.0	1.0	1.0	1.0	1.0	1.0	1.0	1.0	1.0	1.0	1.0	1.0	12.0			
Eff: Avg. Phos (mg/L)					1.391						0.577			0.984	1.93	5.0
Eff: Number of Samples Phos					13.0						11.0		24.0			
Phos. Loading (kg/d)					6.796						1.738			4.267	6.796	5.0
Total Phos Percent Removal					31.825						67.013				67.013	
<b>Nitrogen Series:</b>																
Eff: Avg. NH3 + NH4 (mg/L)					1.169						2.627			1.898	3.5	5.0
Eff: Number of Samples NH3 + NH4					13.0						11.0		24.0			
NH3 + NH4 Loading (kg/d)					5.714						7.912			6.813	7.912	5.0
<b>Disinfection:</b>																
Eff: Avg. H2S (mg/L)					0.02						0.02			0.02		10.0
Eff: # of Samples H2S					13.0						11.0		24.0			
H2S (kg/d)					0.098						0.06			0.152		

Note: 1. The Total, Average, Max and Criteria summaries are not included in the wastewater XML files submitted to the MOE.

2. The annual average concentrations are calculated by taking the arithmetic mean of the monthly average concentration in the effluent calculated for any particular calendar year.

Parameters List: OCWA PDC - MEWS

CBOD5 - Carbonaceous Biochemical Oxygen Demand 5 Day; BOD5 - Biochemical Oxygen Demand, 5 Day, Total Demand; Suspended Solids - Residue, Particulate; NH3 + NH4 as N - Ammonium + Ammonia, Total Unfil. React. ; Total Phosphorus - Phosphorus, Unfiltered Total  
TKN - Nitrogen, Total Kjeldahl Unf. Tot; Nitrate as N - Nitrate, Unfiltered Reactive; Nitrite as N - Nitrite, Unfiltered Reactive; E coli - Escherichia Coli MF

Legend:

Tag group:

Eff-Final Effluent Total, Eff1-Final Effluent 1, Eff2-Final Effluent 2, Raw-Raw Sewage



# Ontario Clean Water Agency Monthly Process Data Report

Municipality: Town of Bruce Mines  
 Facility: [5934] - Bruce Mines Wastewater Treatment Plant & Collection System  
 Works: [110001756] - Bruce Mines Wastewater Treatment Plant & Collection System  
 Classification: Class 1 Wastewater Treatment  
 Receiver: Sucker Creek

Period: 01/01/2012 to 12/31/2012  
 Serviced Population: 271  
 Total Design Capacity(m<sup>3</sup>/day): 567.0

	Jan/2012	Feb/2012	Mar/2012	Apr/2012	May/2012	Jun/2012	Jul/2012	Aug/2012	Sep/2012	Oct/2012	Nov/2012	Dec/2012	<-- Summary -->
--	----------	----------	----------	----------	----------	----------	----------	----------	----------	----------	----------	----------	-----------------

**Raw Sewage\Flows - Raw Sewage**

**Raw Flow: Sum (m3/d)**

Avg	432.436	371.356	590.829	420.151	287.851	408.792	320.112	269.296	259.607	390.627	363.334	383.278	374.954
Max	684.558	430.239	819.948	554.481	323.093	700.883	399.995	298.731	284.767	637.173	443.862	449.379	819.948
Min	348.886	330.722	323.139	326.022	192.221	266.626	274.359	248.689	223.214	250.165	319.233	342.733	192.221
Sum	13,405.507	10,769.338	18,315.695	12,604.515	8,923.391	12,263.762	9,923.469	8,348.165	7,788.213	12,109.422	10,900.007	11,881.632	137,233.116

**Raw Sewage\Raw Sewage - Raw Sewage**

**BOD5 (mg/L)**

Avg	56.0	87.0	63.0	111.0	126.0	118.0	44.0	63.0	148.0	56.0	83.0	158.0	92.75
Max	56.0	87.0	63.0	111.0	126.0	118.0	44.0	63.0	148.0	56.0	83.0	158.0	158.0
Min	56.0	87.0	63.0	111.0	126.0	118.0	44.0	63.0	148.0	56.0	83.0	158.0	44.0

**Suspended Solids (mg/L)**

Avg	41.0	78.0	74.0	114.0	135.0	136.0	62.0	70.0	202.0	86.0	88.0	154.0	103.333
Max	41.0	78.0	74.0	114.0	135.0	136.0	62.0	70.0	202.0	86.0	88.0	154.0	202.0
Min	41.0	78.0	74.0	114.0	135.0	136.0	62.0	70.0	202.0	86.0	88.0	154.0	41.0

**Total Phosphorus (mg/L)**

Avg	1.14	1.83	1.13	0.94	2.04	3.15	0.98	1.98	3.36	1.21	1.75	3.69	1.933
Max	1.14	1.83	1.13	0.94	2.04	3.15	0.98	1.98	3.36	1.21	1.75	3.69	3.69
Min	1.14	1.83	1.13	0.94	2.04	3.15	0.98	1.98	3.36	1.21	1.75	3.69	0.94

**Final Effluent\Flows - Final Effluent 1**

**Final Eff. Flow: Sum (m3/d)**

Avg					3,342.4						2,641.429		3,053.765
Max					5,689.0						4,267.0		5,689.0
Min					1,422.0						711.0		711.0
Sum					33,424.0						18,490.0		51,914.0

**Discharge Duration (hrs)**

Sum					232.0								232.0
-----	--	--	--	--	-------	--	--	--	--	--	--	--	-------

**Final Effluent\Effluent - Final Effluent 1**

**BOD5 (mg/L)**

Avg					< 5.286						< 4.2		< 4.833
Max					12.0						6.0		12.0
Min					< 4.0						< 2.0		< 2.0

**Suspended Solids (mg/L)**

Avg					6.286						4.0		5.333
Max					10.0						7.0		10.0



# Ontario Clean Water Agency Monthly Process Data Report

Municipality: Town of Bruce Mines  
 Facility: [5934] - Bruce Mines Wastewater Treatment Plant & Collection System  
 Works: [110001756] - Bruce Mines Wastewater Treatment Plant & Collection System  
 Classification: Class 1 Wastewater Treatment  
 Receiver: Sucker Creek

Period: 01/01/2012 to 12/31/2012  
 Serviced Population: 271  
 Total Design Capacity(m<sup>3</sup>/day): 567.0

	Jan/2012	Feb/2012	Mar/2012	Apr/2012	May/2012	Jun/2012	Jul/2012	Aug/2012	Sep/2012	Oct/2012	Nov/2012	Dec/2012	<-- Summary -->
<b>Final Effluent\Effluent - Final Effluent 1</b>													
<b>Suspended Solids (mg/L)</b>													
Min					4.0						2.0		2.0
<b>Total Phosphorus (mg/L)</b>													
Avg					1.526						0.298		1.014
Max					1.93						0.41		1.93
Min					0.66						0.25		0.25
<b>NH3 + NH4 as N (mg/L)</b>													
Avg				<	1.386						2.34		< 1.783
Max					2.8						2.8		2.8
Min				<	0.1						1.9		< 0.1
<b>H2S (mg/L)</b>													
Avg				<	0.02						< 0.02		< 0.02
Max				<	0.02						< 0.02		< 0.02
Min				<	0.02						< 0.02		< 0.02
<b>BOD5 (kg/d)</b>													
Avg					21.233						11.378		17.127
Max					68.268						25.602		68.268
Min					5.688						1.422		1.422
<b>Suspended Solids (kg/d)</b>													
Avg					24.484						11.378		19.023
Max					56.89						29.869		56.89
Min					5.688						2.844		2.844
<b>Total Phosphorus (kg/d)</b>													
Avg					5.12						0.762		3.304
Max					8.818						1.749		8.818
Min					2.744						0.213		0.213
<b>NH3 + NH4 as N (kg/d)</b>													
Avg					3.871						5.433		4.522
Max					7.112						10.241		10.241
Min					0.427						1.706		0.427
<b>Final Effluent\Effluent - Final Effluent 2</b>													
<b>BOD5 (mg/L)</b>													
Avg				<	4.833						< 6.5		< 5.667
Max					8.0						10.0		10.0





# Ontario Clean Water Agency Monthly Process Data Report

Municipality: Town of Bruce Mines  
 Facility: [5934] - Bruce Mines Wastewater Treatment Plant & Collection System  
 Works: [110001756] - Bruce Mines Wastewater Treatment Plant & Collection System  
 Classification: Class 1 Wastewater Treatment  
 Receiver: Sucker Creek

Period: 01/01/2012 to 12/31/2012  
 Serviced Population: 271  
 Total Design Capacity(m<sup>3</sup>/day): 567.0

	Jan/2012	Feb/2012	Mar/2012	Apr/2012	May/2012	Jun/2012	Jul/2012	Aug/2012	Sep/2012	Oct/2012	Nov/2012	Dec/2012	<-- Summary -->
<b>Final Effluent\Flows - Final Effluent 2</b>													
<b>Final Eff. Flow: Sum (m3/d)</b>													
Sum					39,875.0						29,695.0		69,570.0
<b>Discharge Duration (hrs)</b>													
Sum					180.0								180.0
<b>Lagoon\Effluent - Final Effluent 1</b>													
<b>Sulphide (mg/L)</b>													
Avg					< 0.02						< 0.02		< 0.02
Max					< 0.02						0.021		0.021
Min					< 0.02						< 0.02		< 0.02
<b>Lagoon\Effluent - Final Effluent 2</b>													
<b>Sulphide (mg/L)</b>													
Avg					< 0.02						< 0.02		< 0.02
Max					< 0.02						< 0.02		< 0.02
Min					< 0.02						< 0.02		< 0.02

Note: ? Calculation not verifiable. At least one result reported as < and at least one result reported >.

## **Appendix B**

### **Maintenance Summary**

**Facility Work Order Summary**  
**1 BRUCE MINES WWTP & CS [5934]**  
 Scheduled Date from Jan 1, 2012 to Dec 31, 2012

WO #	Equipment #	Equipment Description	Activity Description	Maint. Freq	Scheduled Date	Completion Date	Comments
2488687	0000127636	GENERATOR PANEL CONTROL BRUCE MINES MAIN PS	PANEL CONTROL GENERATOR		09/28/2012	09/17/2012	GOOD CONDITION NO SIGNS OF OVERHEATING OR EXCESSIVE WEAR.
2226321		Facility	ANNUAL FIRE SYSTEMS MAINT		02/01/2012	02/29/2012	Fire extinguisher checked and all in working order.
2488724		Facility	TEST CRITICAL ALARMS		06/01/2012	06/28/2012	Test all high and low level critical alarms at each pump station and document that each was complete with a call from the alarm company.
2488723		Facility	TEST CRITICAL ALARMS		05/01/2012	05/15/2012	Test all high and low level critical alarms at each pump station and document that each was complete with a call from the alarm company. All good.
2488722		Facility	TEST CRITICAL ALARMS		04/02/2012	04/23/2012	Test all high and low level critical alarms at each pump station and document that each was complete with a call from the alarm company.
2488721		Facility	TEST CRITICAL ALARMS		03/01/2012	03/22/2012	Test all high and low level critical alarms at each pump station and document that each was complete with a call from the alarm company.All ok.
2488720		Facility	TEST CRITICAL ALARMS		02/01/2012	02/29/2012	Test all high and low level critical alarms at each pump station and document that each was complete with a call from the alarm company. All worked ok.
2488719		Facility	TEST CRITICAL ALARMS		01/02/2012	01/26/2012	Tested all high and low level critical alarms at each pump station and document that each was complete with a call from the alarm company.
2488717		Facility	FEP CONTACT LIST		07/02/2012	07/31/2012	Current contact list up to date.
2488716		Facility	FEP CONTACT LIST		01/02/2012	01/30/2012	Installed new contact list in binder.
2488725		Facility	TEST CRITICAL ALARMS		07/02/2012	07/13/2012	Test all high and low level critical alarms at each pump station and document that each was complete with a call from the alarm company.
2488726		Facility	TEST CRITICAL ALARMS		08/01/2012	08/27/2012	Test all high and low level critical alarms at each pump station and document that each was complete with a call from the alarm company. no issues found

### Facility Work Order Summary

WO #	Equipment #	Equipment Description	Activity Description	Maint. Freq	Scheduled Date	Completion Date	Comments
2488727		Facility	TEST CRITICAL ALARMS		09/03/2012	09/18/2012	Test all high and low level critical alarms at each pump station and document that each was complete with a call from the alarm company.
2488728		Facility	TEST CRITICAL ALARMS		10/01/2012	10/23/2012	Test all high and low level critical alarms at each pump station and document that each was complete with a call from the alarm company.
2488729		Facility	TEST CRITICAL ALARMS		11/01/2012	11/29/2012	Test all high and low level critical alarms at each pump station and document that each was complete with a call from the alarm company.
2488730		Facility	TEST CRITICAL ALARMS		12/03/2012	12/21/2012	Test all high and low level critical alarms at each pump station and document that each was complete with a call from the alarm company. All good. Bell repaired broken connection.
2488732		Facility	ANNUAL FIRE SYSTEMS MAINT		12/02/2012	12/21/2012	Not completed in 2012, gone to RFP for 2013
2488671	0000127619	PUMP SUBM #2 TAYLOR PS	PUMP SUBM	Annually	08/01/2012	08/27/2012	Checked for excessive noise or vibration. pump running normal.
2488674	0000127635	GENERATOR DIESEL BRUCE MINES MAIN PS	ENGINE DIESEL	Annually	07/02/2012	07/12/2012	Changed Oil and filter and fuel filters. Tested under load conditions all ok.
2488669	0000114653	OUTPOST 5 PANEL BRUCE MINE MAIN SPS	OUTPOST 5	Annually	06/02/2012	06/28/2012	Using Wonderware now.
2488688	0000127637	FAN EXHAUST - MAIN PS	FAN EXHAUST - MAIN PS	Annually	06/28/2012	06/28/2012	Works normal.
2488670	0000127618	PUMP SUBM 01 TAYLOR PS	PUMP SUBM	Annually	06/01/2012	06/28/2012	Runs good.
2488689	0000127638	PUMP SUBM #1 MAIN PS	PUMP SUBM	Annually	09/01/2012	09/19/2012	Pump was pulled and cleaned. No visible wear on impeller.
2488690	0000127639	PUMP SUBM #2 MAIN PS	PUMP SUBM	Annually	09/01/2012	09/19/2012	Pump was lifted and checked over. Removed some rags and stuff.
2488672	0000127622	PUMP SUBM 01 PROUT PS	PUMP SUBM	Annually	09/01/2012	09/17/2012	Checked pump for vibration and noise. Pump rate is normal as per daily flows. Pump was pulled and checked and rags and debris was taken out.
2488673	0000127623	PUMP SUBM 02 PROUT PS	PUMP SUBM	Annually	09/01/2012	09/17/2012	Pump running normally, No noise or vibration, Pump was pulled and checked over.
2488675	0000127635	GENERATOR DIESEL BRUCE MINES MAIN PS	ENGINE DIESEL	Monthly	01/02/2012	01/26/2012	Generator tested under load conditions using Test button on panel. All power transferred back and forth normally.
2488676	0000127635	GENERATOR DIESEL BRUCE MINES MAIN PS	ENGINE DIESEL	Monthly	02/01/2012	02/29/2012	Tested Generator under load conditions. All working normal.
2488677	0000127635	GENERATOR DIESEL BRUCE MINES MAIN PS	ENGINE DIESEL	Monthly	03/01/2012	03/22/2012	Tested generator under load conditions all good.



### Facility Work Order Summary

WO #	Equipment #	Equipment Description	Activity Description	Maint. Freq	Scheduled Date	Completion Date	Comments
2488678	0000127635	GENERATOR DIESEL BRUCE MINES MAIN PS	ENGINE DIESEL	Monthly	04/02/2012	04/27/2012	Tested engine/generator under load conditions. All worked normally.
2488679	0000127635	GENERATOR DIESEL BRUCE MINES MAIN PS	ENGINE DIESEL	Monthly	05/01/2012	05/23/2012	Ran Generator under load conditions for 1 hour. All ok.
2488680	0000127635	GENERATOR DIESEL BRUCE MINES MAIN PS	ENGINE DIESEL	Monthly	06/01/2012	06/28/2012	Tested under load conditions
2488681	0000127635	GENERATOR DIESEL BRUCE MINES MAIN PS	ENGINE DIESEL	Monthly	07/02/2012	07/12/2012	Tested under load conditions and power transferred normally.
2488682	0000127635	GENERATOR DIESEL BRUCE MINES MAIN PS	ENGINE DIESEL	Monthly	08/01/2012	08/30/2012	Tested generator under load conditions. All operating normally.
2488683	0000127635	GENERATOR DIESEL BRUCE MINES MAIN PS	ENGINE DIESEL	Monthly	09/03/2012	09/13/2012	Ran under load conditions all ok.
2488684	0000127635	GENERATOR DIESEL BRUCE MINES MAIN PS	ENGINE DIESEL	Monthly	10/01/2012	10/19/2012	Tested all ok.
2488685	0000127635	GENERATOR DIESEL BRUCE MINES MAIN PS	ENGINE DIESEL	Monthly	11/01/2012	11/30/2012	Generator ran normal during 4 hour outage. Fuel tank in need of repair as leak at top and Mcdougall fuels fails to complete checks
2488686	0000127635	GENERATOR DIESEL BRUCE MINES MAIN PS	ENGINE DIESEL	Monthly	12/03/2012	12/18/2012	Tested for 1 hour under load conditions, all ok.
2488692	0000142206	ALARM DIALER MAIN PS	ALARM DIALER	Monthly	02/01/2012	02/29/2012	Perform high level alarm testing at Prout, Taylor and the Main PS by shutting off the pumps and waiting for an alarm response. Ensure the call is received from true steel. All working normally.
2488693	0000142206	ALARM DIALER MAIN PS	ALARM DIALER	Monthly	03/01/2012	03/22/2012	Perform high level alarm testing at Prout, Taylor and the Main PS by shutting off the pumps and waiting for an alarm response. Ensure the call is received from true steel. All working.
2488694	0000142206	ALARM DIALER MAIN PS	ALARM DIALER	Monthly	04/02/2012	04/22/2012	Perform high level alarm testing at Prout, Taylor and the Main PS by shutting off the pumps and waiting for an alarm response. Ensure the call is received from true steel.
2488695	0000142206	ALARM DIALER MAIN PS	ALARM DIALER	Monthly	05/01/2012	05/23/2012	Perform high level alarm testing at Prout, Taylor and the Main PS by shutting off the pumps and waiting for an alarm response. Ensure the call is received from true steel.
2488696	0000142206	ALARM DIALER MAIN PS	ALARM DIALER	Monthly	06/01/2012	06/28/2012	Perform high level alarm testing at Prout, Taylor and the Main PS by shutting off the pumps and waiting for an alarm response. Ensure the call is received from true steel.

### Facility Work Order Summary

WO #	Equipment #	Equipment Description	Activity Description	Maint. Freq	Scheduled Date	Completion Date	Comments
2488697	0000142206	ALARM DIALER MAIN PS	ALARM DIALER	Monthly	07/02/2012	07/19/2012	Perform high level alarm testing at Prout, Taylor and the Main PS by shutting off the pumps and waiting for an alarm response. Ensure the call is received from true steel.
2488698	0000142206	ALARM DIALER MAIN PS	ALARM DIALER	Monthly	08/01/2012	08/27/2012	Perform high level alarm testing at Prout, Taylor and the Main PS by shutting off the pumps and waiting for an alarm response. Ensure the call is received from true steel. Working normally
2488699	0000142206	ALARM DIALER MAIN PS	ALARM DIALER	Monthly	09/03/2012	09/19/2012	Perform high level alarm testing at Prout, Taylor and the Main PS by shutting off the pumps and waiting for an alarm response. Ensure the call is received from true steel.
2488700	0000142206	ALARM DIALER MAIN PS	ALARM DIALER	Monthly	10/01/2012	10/22/2012	Perform high level alarm testing at Prout, Taylor and the Main PS by shutting off the pumps and waiting for an alarm response. Ensure the call is received from true steel.
2488701	0000142206	ALARM DIALER MAIN PS	ALARM DIALER	Monthly	11/01/2012	11/26/2012	Perform high level alarm testing at Prout, Taylor and the Main PS by shutting off the pumps and waiting for an alarm response. Ensure the call is received from true steel.
2488702	0000142206	ALARM DIALER MAIN PS	ALARM DIALER	Monthly	12/03/2012	12/21/2012	Perform high level alarm testing at Prout, Taylor and the Main PS by shutting off the pumps and waiting for an alarm response. Ensure the call is received from true steel. All worked normal.
2488691	0000142206	ALARM DIALER MAIN PS	ALARM DIALER	Monthly	01/02/2012	01/19/2012	Perform high level alarm testing at Prout, Taylor and the Main PS by shutting off the pumps and waiting for an alarm response. Ensure the call is received from ATS.
2558904		Facility	CAPITAL PROJECT	OG02	02/01/2012	02/02/2012	Purchase hour meters and install by redstar at Taylor street lift and Prout street lift station. Assisted in installation by operating pumps and monitoring levels.
2607913		Facility	CAPITAL PROJECT	OG02	04/23/2012	05/07/2012	Alarmed at 0545 for high level at main PS. Pressure release valve corroded and snapped of at common header. Khari called n to control level and also assisted with temporary fix. 2" hole in common header could not restrict flow from leaving well or coming back from foremain. Temporary fix has controlled the issue. A stainless steel 2 " flang with a coupling and shut off valve will be put in place. A release valve will be priced and discussed as to whether it is actually necessary. Repair completed using isolation valve.

### Facility Work Order Summary

WO #	Equipment #	Equipment Description	Activity Description	Maint. Freq	Scheduled Date	Completion Date	Comments
2617569		Facility	CORRECTIVE MAINTENANCE	OG03		05/09/2012	REDSTAR ELECTRIC TESTING PUMPS 1 AND 2 STARTER AND RUN COILS, EACH OPERATING NORMAL WITH 5 SECOND DELAY, LIFT STN AT 630 VOLTS
2488738		Facility	1ST AID/EYE WASH/FIRE SYS	OG32	06/04/2012	06/28/2012	Good
2488739		Facility	1ST AID/EYE WASH/FIRE SYS	OG32	07/02/2012	07/31/2012	
2488740		Facility	1ST AID/EYE WASH/FIRE SYS	OG32	08/02/2012	08/27/2012	Units appear to be in good working order.
2488741		Facility	1ST AID/EYE WASH/FIRE SYS	OG32	09/03/2012	09/17/2012	All items ready for use.
2488742		Facility	1ST AID/EYE WASH/FIRE SYS	OG32	10/02/2012	10/22/2012	Checked and ok.
2488743		Facility	1ST AID/EYE WASH/FIRE SYS	OG32	11/02/2012	11/30/2012	All seems to look to be in good working order.
2488744		Facility	1ST AID/EYE WASH/FIRE SYS	OG32	12/03/2012	12/21/2012	Safety checks ok.
2488733		Facility	1ST AID/EYE WASH/FIRE SYS	OG32	05/02/2012	05/23/2012	Replaced eye wash solution and checked first aid kit, all ok
2488734		Facility	1ST AID/EYE WASH/FIRE SYS	OG32	05/02/2012	05/29/2012	Fire extinguisher indicating ready for use.
2488735		Facility	1ST AID/EYE WASH/FIRE SYS	OG32	05/02/2012	04/20/2012	FIRE EXTINGUISHER GOOD, FIRST AID KIT IN FULL WORKING ORDER, EYE WASH FULL AND READY FOR USE
2488736		Facility	1ST AID/EYE WASH/FIRE SYS	OG32	04/02/2012	04/20/2012	All in good working order.
2488737		Facility	1ST AID/EYE WASH/FIRE SYS	OG32	05/02/2012	06/11/2012	All good.
2488731		Facility	OPERATION/SOP MANUAL REVI	OG34	03/01/2012	03/20/2012	Reviewed and all ok.
2488718		Facility	FACILITY EMERGENCY PLAN R	OG35	02/02/2012	02/29/2012	EMERGENCY PLAN CONITNGENCIES HAVE BEEN REVIEWED (5), AND ONE (1) HAS BEEN TESTED.
2602008		Facility	CALL OUT (EMERGENCY,ALARM	OG44	04/07/2012	04/07/2012	ALARM DIALER BACK UP BATTERY FAILED ..REPLACED BATTERY AND CLEARED ALARMS.
2602012		Facility	CALL OUT (EMERGENCY,ALARM	OG44	04/09/2012	04/09/2012	Low Cl alarm at Water plant. High turbidity on raw water using up Free cl. Increased dosage and reset alarm set points.
2611917		Facility	CALL OUT (EMERGENCY,ALARM	OG44		04/22/2012	duplicate, see work order 2607913
2743671		Facility	CALL OUT (EMERGENCY,ALARM	OG44		12/18/2012	Prout lift station Bell line failure alarm, stn normal, Bell repaired line to hwy 17 following day, alarms tested okay
2488756		Facility	MONTHLY H&S INSPECTION	OG73	01/02/2012	01/17/2012	PÖÖSVÄPÖÖÄÖÖVÄÖÖÖVÖPÄÖÖ ÖSUUÄT ÖVÄJÜÖÖÖÖVÄSÖÖÄÖÖÖ ÖSÖÖPÄÖÖÄJÜÖXÖP-VÄSÖUÄÖÖÖSÖÖE ÖÖÖÖÖÖÖÖÖÖÖÖÖÖP-YÖÄIÄVÖP ÜÖXÖY ÖÖÖYÄ ÖPÖÖT ÖP-VÄJÜÖPÖÖJÖ Y ÖÄJÜÖÖXÖÖ

### Facility Work Order Summary

WO #	Equipment #	Equipment Description	Activity Description	Maint. Freq	Scheduled Date	Completion Date	Comments
2488757		Facility	MONTHLY H&S INSPECTION	OG73	02/02/2012	02/14/2012	Perform H&S facility inspection and document in WMS. Drove into influent chamber at lagoon. No issue noted. Site secured by gate. REVIEWED BY MANAGEMENT
2488758		Facility	MONTHLY H&S INSPECTION	OG73	03/02/2012	03/19/2012	Prout lift station inspected, no issues found - REVIEWED BY MANAGEMENT
2488759		Facility	MONTHLY H&S INSPECTION	OG73	04/02/2012	04/11/2012	Perform H&S facility inspection and document in WMS. All good
2488760		Facility	MONTHLY H&S INSPECTION	OG73	05/02/2012	05/15/2012	HEALTH AND SAFETY INSPECTION OF HWY 17 LIFT STN, GARBAGE PICKED UP TO PREVENT LAWN CUTTING HAZARD- REVIEWED BY MANAGEMENT - OK
2488761		Facility	MONTHLY H&S INSPECTION	OG73	06/04/2012	06/28/2012	Perform H&S facility inspection and document in WMS.No issues REVIEW BY MANAGEMENT
2488762		Facility	MONTHLY H&S INSPECTION	OG73	07/02/2012	07/16/2012	Performed H&S facility ipection and documented in WMS. no issues.REVIEWED BY MANAGEMENT
2488763		Facility	MONTHLY H&S INSPECTION	OG73	08/02/2012	08/27/2012	Perform H&S facility inspection and document in WMS. Prout street Lift station all good.REVIEWED BY MANAGEMENT - OK
2488764		Facility	MONTHLY H&S INSPECTION	OG73	09/03/2012	09/28/2012	Performed H&S facility inspection and documented in WMS. No issues. REVIEWED BY MANAGEMENT - OK
2488765		Facility	MONTHLY H&S INSPECTION	OG73	10/02/2012	10/23/2012	Perform H&S facility inspection and document in WMS.No issues. REVIEWED BY MANAGEMENT-OK.
2488766		Facility	MONTHLY H&S INSPECTION	OG73	11/02/2012	11/20/2012	Performed H&S facility inspection and documented in WMS.REVIEWED BY MANAGEMENT - OK
2488767		Facility	MONTHLY H&S INSPECTION	OG73	12/03/2012	12/21/2012	Perform H&S facility inspection and document in WMS. All good.REVIEWED BY MANAGEMENT. OK.
2488715		Facility	MSDS & NSF REVIEW	OG74	02/01/2012	02/29/2012	REVIEW MSDS AND NSF AND ENSURE DOCUMENTATION IS CURRENT.
2319352	0000142960	PANEL MCC MAIN PS	MAIN STREET MCC PANEL	Tri-annually	11/28/2012	09/17/2012	CHECKED MCC GOOD CONDITION NO SIGNS OF OVERHEATING.
2319353	0000142962	PANEL MCC TAYLOR PS	TAYLOR STREET MCC PANEL	Tri-annually	11/28/2012	09/17/2012	PANEL IS FUNCTIONAL BUT IS AGED AND WILL NEED CHANGED AT SOME TIME IT IS WORKING NORMAL.
2488906	0000142963	METER LEVEL PROUT PS	PERFORM WEEKLY CHECKLIST	Weekly	01/02/2012	01/13/2012	Prout Street equipment working well and within spec.
2488909	0000142963	METER LEVEL PROUT PS	PERFORM WEEKLY CHECKLIST	Weekly	02/01/2012	02/29/2012	Newly installed hour meters for pumps are working well. Good records.

### Facility Work Order Summary

WO #	Equipment #	Equipment Description	Activity Description	Maint. Freq	Scheduled Date	Completion Date	Comments
2488912	0000142963	METER LEVEL PROUT PS	PERFORM WEEKLY CHECKLIST	Weekly	03/01/2012	04/30/2012	No issues with pumps or flows.
2488915	0000142963	METER LEVEL PROUT PS	PERFORM WEEKLY CHECKLIST	Weekly	04/02/2012	04/30/2012	Pump hours normal, flows normal.
2488918	0000142963	METER LEVEL PROUT PS	PERFORM WEEKLY CHECKLIST	Weekly	05/01/2012	05/23/2012	All good at this lift station. Pump hours normal
2488921	0000142963	METER LEVEL PROUT PS	PERFORM WEEKLY CHECKLIST	Weekly	06/01/2012	06/28/2012	checks show all running normal.
2488898	0000127640	METER LEVEL 01 MAIN PS	PERFORM WEEKLY CHECKLIST	Weekly	12/03/2012	12/18/2012	Bell line had issues effecting alarm system at outer lift stations, Bell to repair today. Flows are normal.
1282265	0000127640	METER LEVEL 01 MAIN PS	PERFORM WEEKLY CHECKLIST	Weekly	12/01/2006	07/13/2012	Check emergency lights
2488832	0000127640	METER LEVEL 01 MAIN PS	PERFORM WEEKLY CHECKLIST	Weekly	06/01/2012	06/28/2012	System operating normal.
2488843	0000127640	METER LEVEL 01 MAIN PS	PERFORM WEEKLY CHECKLIST	Weekly	07/02/2012	07/18/2012	Waste water flows normal.
2488854	0000127640	METER LEVEL 01 MAIN PS	PERFORM WEEKLY CHECKLIST	Weekly	08/01/2012	08/27/2012	Flow normal for dry season. lagoon has duck weed on surface.
2488865	0000127640	METER LEVEL 01 MAIN PS	PERFORM WEEKLY CHECKLIST	Weekly	09/03/2012	09/17/2012	Flows low due to dry weather. Lagoon levels good to low.
2488876	0000127640	METER LEVEL 01 MAIN PS	PERFORM WEEKLY CHECKLIST	Weekly	10/01/2012	10/19/2012	Sewage has low flows due to dry weather. Lagoons ready to be discharged.
2488887	0000127640	METER LEVEL 01 MAIN PS	PERFORM WEEKLY CHECKLIST	Weekly	11/01/2012	11/27/2012	Lagoon discharge completed effluent clear.
1282264	0000127639	PUMP SUBM #2 MAIN PS	PERFORM WEEKLY CHECKLIST	Weekly	12/01/2006	07/13/2012	Check emergency lights
2488777	0000127640	METER LEVEL 01 MAIN PS	PERFORM WEEKLY CHECKLIST	Weekly	01/02/2012	01/23/2012	Pump station has normal flows calculated by pump run times.
2488788	0000127640	METER LEVEL 01 MAIN PS	PERFORM WEEKLY CHECKLIST	Weekly	02/01/2012	02/29/2012	Main station in good working order.. Pump run times normal.
2488799	0000127640	METER LEVEL 01 MAIN PS	PERFORM WEEKLY CHECKLIST	Weekly	03/01/2012	03/19/2012	Flows up somewhat due to spring thaw. Lagoon ice covered.
2488810	0000127640	METER LEVEL 01 MAIN PS	PERFORM WEEKLY CHECKLIST	Weekly	04/02/2012	04/20/2012	Flows normal, Lagoon 90 % full
2488821	0000127640	METER LEVEL 01 MAIN PS	PERFORM WEEKLY CHECKLIST	Weekly	05/01/2012	05/23/2012	Lagoon Discharge completed, Flows very low due to dry weather.
2488842	0000127639	PUMP SUBM #2 MAIN PS	PERFORM WEEKLY CHECKLIST	Weekly	07/02/2012	07/18/2012	Waste water flows normal.
2488853	0000127639	PUMP SUBM #2 MAIN PS	PERFORM WEEKLY CHECKLIST	Weekly	08/01/2012	08/27/2012	Flow normal for dry season. lagoon has duck weed on surface.

### Facility Work Order Summary

WO #	Equipment #	Equipment Description	Activity Description	Maint. Freq	Scheduled Date	Completion Date	Comments
2488864	0000127639	PUMP SUBM #2 MAIN PS	PERFORM WEEKLY CHECKLIST	Weekly	09/03/2012	09/17/2012	Flows low due to dry weather. Lagoon levels good to low.
2488875	0000127639	PUMP SUBM #2 MAIN PS	PERFORM WEEKLY CHECKLIST	Weekly	10/01/2012	10/19/2012	Sewage has low flows due to dry weather. Lagoons ready to be discharged.
2488886	0000127639	PUMP SUBM #2 MAIN PS	PERFORM WEEKLY CHECKLIST	Weekly	11/01/2012	11/27/2012	Lagoon discharge completed effluent clear.
2488897	0000127639	PUMP SUBM #2 MAIN PS	PERFORM WEEKLY CHECKLIST	Weekly	12/03/2012	12/18/2012	Bell line had issues effecting alarm system at outer lift stations, Bell to repair today. Flows are normal.
2488776	0000127639	PUMP SUBM #2 MAIN PS	PERFORM WEEKLY CHECKLIST	Weekly	01/02/2012	01/23/2012	Pump station has normal flows calculated by pump run times.
2488787	0000127639	PUMP SUBM #2 MAIN PS	PERFORM WEEKLY CHECKLIST	Weekly	02/01/2012	02/29/2012	Main station in good working order.. Pump run times normal.
2488798	0000127639	PUMP SUBM #2 MAIN PS	PERFORM WEEKLY CHECKLIST	Weekly	03/01/2012	03/19/2012	Flows up somewhat due to spring thaw. Lagoon ice covered.
2488809	0000127639	PUMP SUBM #2 MAIN PS	PERFORM WEEKLY CHECKLIST	Weekly	04/02/2012	04/20/2012	Flows normal, Lagoon 90 % full
2488820	0000127639	PUMP SUBM #2 MAIN PS	PERFORM WEEKLY CHECKLIST	Weekly	05/01/2012	05/23/2012	Lagoon Discharge completed, Flows very low due to dry weather.
2488831	0000127639	PUMP SUBM #2 MAIN PS	PERFORM WEEKLY CHECKLIST	Weekly	06/01/2012	06/28/2012	System operating normal.
2488852	0000127638	PUMP SUBM #1 MAIN PS	PERFORM WEEKLY CHECKLIST	Weekly	08/01/2012	08/27/2012	Flow normal for dry season. lagoon has duck weed on surface.
2488863	0000127638	PUMP SUBM #1 MAIN PS	PERFORM WEEKLY CHECKLIST	Weekly	09/03/2012	09/17/2012	Flows low due to dry weather. Lagoon levels good to low.
2488874	0000127638	PUMP SUBM #1 MAIN PS	PERFORM WEEKLY CHECKLIST	Weekly	10/01/2012	10/19/2012	Sewage has low flows due to dry weather. Lagoons ready to be discharged.
2488885	0000127638	PUMP SUBM #1 MAIN PS	PERFORM WEEKLY CHECKLIST	Weekly	11/01/2012	11/27/2012	Lagoon discharge completed effluent clear.
2488896	0000127638	PUMP SUBM #1 MAIN PS	PERFORM WEEKLY CHECKLIST	Weekly	12/03/2012	12/18/2012	Bell line had issues effecting alarm system at outer lift stations, Bell to repair today. Flows are normal.
1282263	0000127638	PUMP SUBM #1 MAIN PS	PERFORM WEEKLY CHECKLIST	Weekly	12/01/2006	07/13/2012	Check emergency lights
2488786	0000127638	PUMP SUBM #1 MAIN PS	PERFORM WEEKLY CHECKLIST	Weekly	02/01/2012	02/29/2012	Main station in good working order.. Pump run times normal.
2488797	0000127638	PUMP SUBM #1 MAIN PS	PERFORM WEEKLY CHECKLIST	Weekly	03/01/2012	03/19/2012	Flows up somewhat due to spring thaw. Lagoon ice covered.
2488808	0000127638	PUMP SUBM #1 MAIN PS	PERFORM WEEKLY CHECKLIST	Weekly	04/02/2012	04/20/2012	Flows normal, Lagoon 90 % full
2488819	0000127638	PUMP SUBM #1 MAIN PS	PERFORM WEEKLY CHECKLIST	Weekly	05/01/2012	05/23/2012	Lagoon Discharge completed, Flows very low due to dry weather.

### Facility Work Order Summary

WO #	Equipment #	Equipment Description	Activity Description	Maint. Freq	Scheduled Date	Completion Date	Comments
2488830	0000127638	PUMP SUBM #1 MAIN PS	PERFORM WEEKLY CHECKLIST	Weekly	06/01/2012	06/28/2012	System operating normal.
2488841	0000127638	PUMP SUBM #1 MAIN PS	PERFORM WEEKLY CHECKLIST	Weekly	07/02/2012	07/18/2012	Waste water flows normal.
2488862	0000127636	GENERATOR PANEL CONTROL BRUCE MINES MAIN PS	PERFORM WEEKLY CHECKLIST	Weekly	09/03/2012	09/17/2012	Flows low due to dry weather. Lagoon levels good to low.
2488873	0000127636	GENERATOR PANEL CONTROL BRUCE MINES MAIN PS	PERFORM WEEKLY CHECKLIST	Weekly	10/01/2012	10/19/2012	Sewage has low flows due to dry weather. Lagoons ready to be discharged.
2488884	0000127636	GENERATOR PANEL CONTROL BRUCE MINES MAIN PS	PERFORM WEEKLY CHECKLIST	Weekly	11/01/2012	11/27/2012	Lagoon discharge completed effluent clear.
2488895	0000127636	GENERATOR PANEL CONTROL BRUCE MINES MAIN PS	PERFORM WEEKLY CHECKLIST	Weekly	12/03/2012	12/18/2012	Bell line had issues effecting alarm system at outer lift stations, Bell to repair today. Flows are normal.
1282262	0000127636	GENERATOR PANEL CONTROL BRUCE MINES MAIN PS	PERFORM WEEKLY CHECKLIST	Weekly	12/01/2006	07/13/2012	Check emergency lights
2488775	0000127638	PUMP SUBM #1 MAIN PS	PERFORM WEEKLY CHECKLIST	Weekly	01/02/2012	01/23/2012	Pump station has normal flows calculated by pump run times.
2488796	0000127636	GENERATOR PANEL CONTROL BRUCE MINES MAIN PS	PERFORM WEEKLY CHECKLIST	Weekly	03/01/2012	03/19/2012	Flows up somewhat due to spring thaw. Lagoon ice covered.
2488807	0000127636	GENERATOR PANEL CONTROL BRUCE MINES MAIN PS	PERFORM WEEKLY CHECKLIST	Weekly	04/02/2012	04/20/2012	Flows normal, Lagoon 90 % full
2488818	0000127636	GENERATOR PANEL CONTROL BRUCE MINES MAIN PS	PERFORM WEEKLY CHECKLIST	Weekly	05/01/2012	05/23/2012	Lagoon Discharge completed, Flows very low due to dry weather.
2488829	0000127636	GENERATOR PANEL CONTROL BRUCE MINES MAIN PS	PERFORM WEEKLY CHECKLIST	Weekly	06/01/2012	06/28/2012	System operating normal.
2488840	0000127636	GENERATOR PANEL CONTROL BRUCE MINES MAIN PS	PERFORM WEEKLY CHECKLIST	Weekly	07/02/2012	07/18/2012	Waste water flows normal.
2488851	0000127636	GENERATOR PANEL CONTROL BRUCE MINES MAIN PS	PERFORM WEEKLY CHECKLIST	Weekly	08/01/2012	08/27/2012	Flow normal for dry season. lagoon has duck weed on surface.
2488872	0000127635	GENERATOR DIESEL BRUCE MINES MAIN PS	PERFORM WEEKLY CHECKLIST	Weekly	10/01/2012	10/19/2012	Sewage has low flows due to dry weather. Lagoons ready to be discharged.
2488883	0000127635	GENERATOR DIESEL BRUCE MINES MAIN PS	PERFORM WEEKLY CHECKLIST	Weekly	11/01/2012	11/27/2012	Lagoon discharge completed effluent clear.
2488894	0000127635	GENERATOR DIESEL BRUCE MINES MAIN PS	PERFORM WEEKLY CHECKLIST	Weekly	12/03/2012	12/18/2012	Bell line had issues effecting alarm system at outer lift stations, Bell to repair today. Flows are normal.
1282261	0000127635	GENERATOR DIESEL BRUCE MINES MAIN PS	PERFORM WEEKLY CHECKLIST	Weekly	12/01/2006	07/13/2012	Check emergency lights
2488774	0000127636	GENERATOR PANEL CONTROL BRUCE MINES MAIN PS	PERFORM WEEKLY CHECKLIST	Weekly	01/02/2012	01/23/2012	Pump station has normal flows calculated by pump run times.
2488785	0000127636	GENERATOR PANEL CONTROL BRUCE MINES MAIN PS	PERFORM WEEKLY CHECKLIST	Weekly	02/01/2012	02/29/2012	Main station in good working order.. Pump run times normal.

### Facility Work Order Summary

WO #	Equipment #	Equipment Description	Activity Description	Maint. Freq	Scheduled Date	Completion Date	Comments
2488806	0000127635	GENERATOR DIESEL BRUCE MINES MAIN PS	PERFORM WEEKLY CHECKLIST	Weekly	04/02/2012	04/20/2012	Flows normal, Lagoon 90 % full
2488817	0000127635	GENERATOR DIESEL BRUCE MINES MAIN PS	PERFORM WEEKLY CHECKLIST	Weekly	05/01/2012	05/23/2012	Lagoon Discharge completed, Flows very low due to dry weather.
2488828	0000127635	GENERATOR DIESEL BRUCE MINES MAIN PS	PERFORM WEEKLY CHECKLIST	Weekly	06/01/2012	06/28/2012	System operating normal.
2488839	0000127635	GENERATOR DIESEL BRUCE MINES MAIN PS	PERFORM WEEKLY CHECKLIST	Weekly	07/02/2012	07/18/2012	Waste water flows normal.
2488850	0000127635	GENERATOR DIESEL BRUCE MINES MAIN PS	PERFORM WEEKLY CHECKLIST	Weekly	08/01/2012	08/27/2012	Flow normal for dry season. lagoon has duck weed on surface.
2488861	0000127635	GENERATOR DIESEL BRUCE MINES MAIN PS	PERFORM WEEKLY CHECKLIST	Weekly	09/03/2012	09/17/2012	Flows low due to dry weather. Lagoon levels good to low.
2488932	0000127623	PUMP SUBM 02 PROUT PS	PERFORM WEEKLY CHECKLIST	Weekly	10/01/2012	09/19/2012	Operations are normal at this site.
2488935	0000127623	PUMP SUBM 02 PROUT PS	PERFORM WEEKLY CHECKLIST	Weekly	11/01/2012	11/26/2012	No problems at this lift station, ESA inspected.
2488938	0000127623	PUMP SUBM 02 PROUT PS	PERFORM WEEKLY CHECKLIST	Weekly	12/03/2012	12/18/2012	Alarm issues caused by bad bell line, to be repaired.
2488773	0000127635	GENERATOR DIESEL BRUCE MINES MAIN PS	PERFORM WEEKLY CHECKLIST	Weekly	01/02/2012	01/23/2012	Pump station has normal flows calculated by pump run times.
2488784	0000127635	GENERATOR DIESEL BRUCE MINES MAIN PS	PERFORM WEEKLY CHECKLIST	Weekly	02/01/2012	02/29/2012	Main station in good working order.. Pump run times normal.
2488795	0000127635	GENERATOR DIESEL BRUCE MINES MAIN PS	PERFORM WEEKLY CHECKLIST	Weekly	03/01/2012	03/19/2012	Flows up somewhat due to spring thaw. Lagoon ice covered.
2488914	0000127623	PUMP SUBM 02 PROUT PS	PERFORM WEEKLY CHECKLIST	Weekly	04/02/2012	04/30/2012	Pump hours normal, flows normal.
2488917	0000127623	PUMP SUBM 02 PROUT PS	PERFORM WEEKLY CHECKLIST	Weekly	05/01/2012	05/23/2012	All good at this lift station. Pump hours normal
2488920	0000127623	PUMP SUBM 02 PROUT PS	PERFORM WEEKLY CHECKLIST	Weekly	06/01/2012	06/28/2012	checks show all running normal.
2488923	0000127623	PUMP SUBM 02 PROUT PS	PERFORM WEEKLY CHECKLIST	Weekly	07/02/2012	07/18/2012	Lift station operating normal.
2488926	0000127623	PUMP SUBM 02 PROUT PS	PERFORM WEEKLY CHECKLIST	Weekly	08/01/2012	08/27/2012	Station checks indicates all working normal.
2488929	0000127623	PUMP SUBM 02 PROUT PS	PERFORM WEEKLY CHECKLIST	Weekly	09/03/2012	09/17/2012	All pumps running normal. pump hours normal.
2488931	0000127622	PUMP SUBM 01 PROUT PS	PERFORM WEEKLY CHECKLIST	Weekly	10/01/2012	09/19/2012	Operations are normal at this site.
2488934	0000127622	PUMP SUBM 01 PROUT PS	PERFORM WEEKLY CHECKLIST	Weekly	11/01/2012	11/26/2012	No problems at this lift station, ESA inspected.
2488937	0000127622	PUMP SUBM 01 PROUT PS	PERFORM WEEKLY CHECKLIST	Weekly	12/03/2012	12/18/2012	Alarm issues caused by bad bell line, to be repaired.



### Facility Work Order Summary

WO #	Equipment #	Equipment Description	Activity Description	Maint. Freq	Scheduled Date	Completion Date	Comments
2488905	0000127623	PUMP SUBM 02 PROUT PS	PERFORM WEEKLY CHECKLIST	Weekly	01/02/2012	01/13/2012	Prout Street equipment working well and within spec.
2488908	0000127623	PUMP SUBM 02 PROUT PS	PERFORM WEEKLY CHECKLIST	Weekly	02/01/2012	02/29/2012	Newly installed hour meters for pumps are working well. Good records.
2488911	0000127623	PUMP SUBM 02 PROUT PS	PERFORM WEEKLY CHECKLIST	Weekly	03/01/2012	04/30/2012	No issues with pumps or flows.
2488913	0000127622	PUMP SUBM 01 PROUT PS	PERFORM WEEKLY CHECKLIST	Weekly	04/02/2012	04/30/2012	Pump hours normal, flows normal.
2488916	0000127622	PUMP SUBM 01 PROUT PS	PERFORM WEEKLY CHECKLIST	Weekly	05/01/2012	05/23/2012	All good at this lift station. Pump hours normal
2488919	0000127622	PUMP SUBM 01 PROUT PS	PERFORM WEEKLY CHECKLIST	Weekly	06/01/2012	06/28/2012	checks show all running normal.
2488922	0000127622	PUMP SUBM 01 PROUT PS	PERFORM WEEKLY CHECKLIST	Weekly	07/02/2012	07/18/2012	Lift station operating normal.
2488925	0000127622	PUMP SUBM 01 PROUT PS	PERFORM WEEKLY CHECKLIST	Weekly	08/01/2012	08/27/2012	Station checks indicates all working normal.
2488928	0000127622	PUMP SUBM 01 PROUT PS	PERFORM WEEKLY CHECKLIST	Weekly	09/03/2012	09/17/2012	All pumps running normal. pump hours normal.
2488882	0000127620	GENERATOR TRANSFER SWITCH BRUCE MINES MAIN PS	PERFORM WEEKLY CHECKLIST	Weekly	11/01/2012	11/27/2012	Lagoon discharge completed effluent clear.
2488893	0000127620	GENERATOR TRANSFER SWITCH BRUCE MINES MAIN PS	PERFORM WEEKLY CHECKLIST	Weekly	12/03/2012	12/18/2012	Bell line had issues effecting alarm system at outer lift stations, Bell to repair today. Flows are normal.
1282260	0000127620	GENERATOR TRANSFER SWITCH BRUCE MINES MAIN PS	PERFORM WEEKLY CHECKLIST	Weekly	12/01/2006	07/13/2012	Check emergency lights
2488904	0000127622	PUMP SUBM 01 PROUT PS	PERFORM WEEKLY CHECKLIST	Weekly	01/02/2012	01/13/2012	Prout Street equipment working well and within spec.
2488907	0000127622	PUMP SUBM 01 PROUT PS	PERFORM WEEKLY CHECKLIST	Weekly	02/01/2012	02/29/2012	Newly installed hour meters for pumps are working well. Good records.
2488910	0000127622	PUMP SUBM 01 PROUT PS	PERFORM WEEKLY CHECKLIST	Weekly	03/01/2012	04/30/2012	No issues with pumps or flows.
2488816	0000127620	GENERATOR TRANSFER SWITCH BRUCE MINES MAIN PS	PERFORM WEEKLY CHECKLIST	Weekly	05/01/2012	05/23/2012	Lagoon Discharge completed, Flows very low due to dry weather.
2488827	0000127620	GENERATOR TRANSFER SWITCH BRUCE MINES MAIN PS	PERFORM WEEKLY CHECKLIST	Weekly	06/01/2012	06/28/2012	System operating normal.
2488838	0000127620	GENERATOR TRANSFER SWITCH BRUCE MINES MAIN PS	PERFORM WEEKLY CHECKLIST	Weekly	07/02/2012	07/18/2012	Waste water flows normal.
2488849	0000127620	GENERATOR TRANSFER SWITCH BRUCE MINES MAIN PS	PERFORM WEEKLY CHECKLIST	Weekly	08/01/2012	08/27/2012	Flow normal for dry season. lagoon has duck weed on surface.
2488860	0000127620	GENERATOR TRANSFER SWITCH BRUCE MINES MAIN PS	PERFORM WEEKLY CHECKLIST	Weekly	09/03/2012	09/17/2012	Flows low due to dry weather. Lagoon levels good to low.

### Facility Work Order Summary

WO #	Equipment #	Equipment Description	Activity Description	Maint. Freq	Scheduled Date	Completion Date	Comments
2488871	0000127620	GENERATOR TRANSFER SWITCH BRUCE MINES MAIN PS	PERFORM WEEKLY CHECKLIST	Weekly	10/01/2012	10/19/2012	Sewage has low flows due to dry weather. Lagoons ready to be discharged.
2488982	0000127619	PUMP SUBM #2 TAYLOR PS	PERFORM WEEKLY CHECKLIST	Weekly	11/01/2012	11/27/2012	All checks indicated no issues. Pump hours normal.
2488986	0000127619	PUMP SUBM #2 TAYLOR PS	PERFORM WEEKLY CHECKLIST	Weekly	12/03/2012	12/18/2012	Station operating normal.
2488772	0000127620	GENERATOR TRANSFER SWITCH BRUCE MINES MAIN PS	PERFORM WEEKLY CHECKLIST	Weekly	01/02/2012	01/23/2012	Pump station has normal flows calculated by pump run times.
2488783	0000127620	GENERATOR TRANSFER SWITCH BRUCE MINES MAIN PS	PERFORM WEEKLY CHECKLIST	Weekly	02/01/2012	02/29/2012	Main station in good working order.. Pump run times normal.
2488794	0000127620	GENERATOR TRANSFER SWITCH BRUCE MINES MAIN PS	PERFORM WEEKLY CHECKLIST	Weekly	03/01/2012	03/19/2012	Flows up somewhat due to spring thaw. Lagoon ice covered.
2488805	0000127620	GENERATOR TRANSFER SWITCH BRUCE MINES MAIN PS	PERFORM WEEKLY CHECKLIST	Weekly	04/02/2012	04/20/2012	Flows normal, Lagoon 90 % full
2488958	0000127619	PUMP SUBM #2 TAYLOR PS	PERFORM WEEKLY CHECKLIST	Weekly	05/01/2012	05/23/2012	Pump hours normal. All ok
2488962	0000127619	PUMP SUBM #2 TAYLOR PS	PERFORM WEEKLY CHECKLIST	Weekly	06/01/2012	06/28/2012	All ok at this station.
2488966	0000127619	PUMP SUBM #2 TAYLOR PS	PERFORM WEEKLY CHECKLIST	Weekly	07/02/2012	07/18/2012	Normal flows and operations.
2488970	0000127619	PUMP SUBM #2 TAYLOR PS	PERFORM WEEKLY CHECKLIST	Weekly	08/01/2012	08/27/2012	All system operating normally.
2488974	0000127619	PUMP SUBM #2 TAYLOR PS	PERFORM WEEKLY CHECKLIST	Weekly	09/03/2012	09/17/2012	All operating normally.
2488978	0000127619	PUMP SUBM #2 TAYLOR PS	PERFORM WEEKLY CHECKLIST	Weekly	10/01/2012	09/27/2012	All ok at this site no issues.
2488981	0000127618	PUMP SUBM 01 TAYLOR PS	PERFORM WEEKLY CHECKLIST	Weekly	11/01/2012	11/27/2012	All checks indicated no issues. Pump hours normal.
2488985	0000127618	PUMP SUBM 01 TAYLOR PS	PERFORM WEEKLY CHECKLIST	Weekly	12/03/2012	12/18/2012	Station operating normal.
2488942	0000127619	PUMP SUBM #2 TAYLOR PS	PERFORM WEEKLY CHECKLIST	Weekly	01/02/2012	01/23/2012	All operations normal at this station.
2488946	0000127619	PUMP SUBM #2 TAYLOR PS	PERFORM WEEKLY CHECKLIST	Weekly	02/01/2012	02/29/2012	No problems at this pumps station. pump hours normal.
2488950	0000127619	PUMP SUBM #2 TAYLOR PS	PERFORM WEEKLY CHECKLIST	Weekly	03/01/2012	03/19/2012	No problems at this lift station, pump hour are normal.
2488954	0000127619	PUMP SUBM #2 TAYLOR PS	PERFORM WEEKLY CHECKLIST	Weekly	04/02/2012	04/20/2012	Pump hours normal for this time of year.
2488957	0000127618	PUMP SUBM 01 TAYLOR PS	PERFORM WEEKLY CHECKLIST	Weekly	05/01/2012	05/23/2012	Pump hours normal. All ok
2488961	0000127618	PUMP SUBM 01 TAYLOR PS	PERFORM WEEKLY CHECKLIST	Weekly	06/01/2012	06/28/2012	All ok at this station.

### Facility Work Order Summary

WO #	Equipment #	Equipment Description	Activity Description	Maint. Freq	Scheduled Date	Completion Date	Comments
2488965	0000127618	PUMP SUBM 01 TAYLOR PS	PERFORM WEEKLY CHECKLIST	Weekly	07/02/2012	07/18/2012	Normal flows and operations.
2488969	0000127618	PUMP SUBM 01 TAYLOR PS	PERFORM WEEKLY CHECKLIST	Weekly	08/01/2012	08/27/2012	All system operating normally.
2488973	0000127618	PUMP SUBM 01 TAYLOR PS	PERFORM WEEKLY CHECKLIST	Weekly	09/03/2012	09/17/2012	All operating normally.
2488977	0000127618	PUMP SUBM 01 TAYLOR PS	PERFORM WEEKLY CHECKLIST	Weekly	10/01/2012	09/27/2012	All ok at this site no issues.
2488980	0000127617	METER LEVEL TAYOR ST.	PERFORM WEEKLY CHECKLIST	Weekly	11/01/2012	11/27/2012	All checks indicated no issues. Pump hours normal.
2488984	0000127617	METER LEVEL TAYOR ST.	PERFORM WEEKLY CHECKLIST	Weekly	12/03/2012	12/18/2012	Station operating normal.
2488941	0000127618	PUMP SUBM 01 TAYLOR PS	PERFORM WEEKLY CHECKLIST	Weekly	01/02/2012	01/23/2012	All operations normal at this station.
2488945	0000127618	PUMP SUBM 01 TAYLOR PS	PERFORM WEEKLY CHECKLIST	Weekly	02/01/2012	02/29/2012	No problems at this pumps station. pump hours normal.
2488949	0000127618	PUMP SUBM 01 TAYLOR PS	PERFORM WEEKLY CHECKLIST	Weekly	03/01/2012	03/19/2012	No problems at this lift station, pump hour are normal.
2488953	0000127618	PUMP SUBM 01 TAYLOR PS	PERFORM WEEKLY CHECKLIST	Weekly	04/02/2012	04/20/2012	Pump hours normal for this time of year.
2488956	0000127617	METER LEVEL TAYOR ST.	PERFORM WEEKLY CHECKLIST	Weekly	05/01/2012	05/23/2012	Pump hours normal. All ok
2488960	0000127617	METER LEVEL TAYOR ST.	PERFORM WEEKLY CHECKLIST	Weekly	06/01/2012	06/28/2012	All ok at this station.
2488964	0000127617	METER LEVEL TAYOR ST.	PERFORM WEEKLY CHECKLIST	Weekly	07/02/2012	07/18/2012	Normal flows and operations.
2488968	0000127617	METER LEVEL TAYOR ST.	PERFORM WEEKLY CHECKLIST	Weekly	08/01/2012	08/27/2012	All system operating normally.
2488972	0000127617	METER LEVEL TAYOR ST.	PERFORM WEEKLY CHECKLIST	Weekly	09/03/2012	09/17/2012	All operating normally.
2488976	0000127617	METER LEVEL TAYOR ST.	PERFORM WEEKLY CHECKLIST	Weekly	10/01/2012	09/27/2012	All ok at this site no issues.
2488900	0000114653	OUTPOST 5 PANEL BRUCE MINE MAIN SPS	PERFORM WEEKLY CHECKLIST	Weekly	12/03/2012	12/18/2012	Bell line had issues effecting alarm system at outer lift stations, Bell to repair today. Flows are normal.
1282267	0000114653	OUTPOST 5 PANEL BRUCE MINE MAIN SPS	PERFORM WEEKLY CHECKLIST	Weekly	12/01/2006	07/13/2012	Check emergency lights
2488940	0000127617	METER LEVEL TAYOR ST.	PERFORM WEEKLY CHECKLIST	Weekly	01/02/2012	01/23/2012	All operations normal at this station.
2488944	0000127617	METER LEVEL TAYOR ST.	PERFORM WEEKLY CHECKLIST	Weekly	02/01/2012	02/29/2012	No problems at this pumps station. pump hours normal.

### Facility Work Order Summary

WO #	Equipment #	Equipment Description	Activity Description	Maint. Freq	Scheduled Date	Completion Date	Comments
2488948	0000127617	METER LEVEL TAYOR ST.	PERFORM WEEKLY CHECKLIST	Weekly	03/01/2012	03/19/2012	No problems at this lift station, pump hour are normal.
2488952	0000127617	METER LEVEL TAYOR ST.	PERFORM WEEKLY CHECKLIST	Weekly	04/02/2012	04/20/2012	Pump hours normal for this time of year.
2488834	0000114653	OUTPOST 5 PANEL BRUCE MINE MAIN SPS	PERFORM WEEKLY CHECKLIST	Weekly	06/01/2012	06/28/2012	System operating normal.
2488845	0000114653	OUTPOST 5 PANEL BRUCE MINE MAIN SPS	PERFORM WEEKLY CHECKLIST	Weekly	07/02/2012	07/18/2012	Waste water flows normal.
2488856	0000114653	OUTPOST 5 PANEL BRUCE MINE MAIN SPS	PERFORM WEEKLY CHECKLIST	Weekly	08/01/2012	08/27/2012	Flow normal for dry season. lagoon has duck weed on surface.
2488867	0000114653	OUTPOST 5 PANEL BRUCE MINE MAIN SPS	PERFORM WEEKLY CHECKLIST	Weekly	09/03/2012	09/17/2012	Flows low due to dry weather. Lagoon levels good to low.
2488878	0000114653	OUTPOST 5 PANEL BRUCE MINE MAIN SPS	PERFORM WEEKLY CHECKLIST	Weekly	10/01/2012	10/19/2012	Sewage has low flows due to dry weather. Lagoons ready to be discharged.
2488889	0000114653	OUTPOST 5 PANEL BRUCE MINE MAIN SPS	PERFORM WEEKLY CHECKLIST	Weekly	11/01/2012	11/27/2012	Lagoon discharge completed effluent clear.
2488902	0000142961	TANK DIESEL MAIN PS	PERFORM WEEKLY CHECKLIST	Weekly	12/03/2012	12/18/2012	Bell line had issues effecting alarm system at outer lift stations, Bell to repair today. Flows are normal.
2488779	0000114653	OUTPOST 5 PANEL BRUCE MINE MAIN SPS	PERFORM WEEKLY CHECKLIST	Weekly	01/02/2012	01/23/2012	Pump station has normal flows calculated by pump run times.
2488790	0000114653	OUTPOST 5 PANEL BRUCE MINE MAIN SPS	PERFORM WEEKLY CHECKLIST	Weekly	02/01/2012	02/29/2012	Main station in good working order.. Pump run times normal.
2488801	0000114653	OUTPOST 5 PANEL BRUCE MINE MAIN SPS	PERFORM WEEKLY CHECKLIST	Weekly	03/01/2012	03/19/2012	Flows up somewhat due to spring thaw. Lagoon ice covered.
2488812	0000114653	OUTPOST 5 PANEL BRUCE MINE MAIN SPS	PERFORM WEEKLY CHECKLIST	Weekly	04/02/2012	04/20/2012	Flows normal, Lagoon 90 % full
2488823	0000114653	OUTPOST 5 PANEL BRUCE MINE MAIN SPS	PERFORM WEEKLY CHECKLIST	Weekly	05/01/2012	05/23/2012	Lagoon Discharge completed, Flows very low due to dry weather.
2488836	0000142961	TANK DIESEL MAIN PS	PERFORM WEEKLY CHECKLIST	Weekly	06/01/2012	06/28/2012	System operating normal.
2488847	0000142961	TANK DIESEL MAIN PS	PERFORM WEEKLY CHECKLIST	Weekly	07/02/2012	07/18/2012	Waste water flows normal.
2488858	0000142961	TANK DIESEL MAIN PS	PERFORM WEEKLY CHECKLIST	Weekly	08/01/2012	08/27/2012	Flow normal for dry season. lagoon has duck weed on surface.
2488869	0000142961	TANK DIESEL MAIN PS	PERFORM WEEKLY CHECKLIST	Weekly	09/03/2012	09/17/2012	Flows low due to dry weather. Lagoon levels good to low.
2488880	0000142961	TANK DIESEL MAIN PS	PERFORM WEEKLY CHECKLIST	Weekly	10/01/2012	10/19/2012	Sewage has low flows due to dry weather. Lagoons ready to be discharged.
2488891	0000142961	TANK DIESEL MAIN PS	PERFORM WEEKLY CHECKLIST	Weekly	11/01/2012	11/27/2012	Lagoon discharge completed effluent clear.

### Facility Work Order Summary

WO #	Equipment #	Equipment Description	Activity Description	Maint. Freq	Scheduled Date	Completion Date	Comments
1282266	0000142206	ALARM DIALER MAIN PS	PERFORM WEEKLY CHECKLIST	Weekly	12/01/2006	07/13/2012	Check emergency lights
2488781	0000142961	TANK DIESEL MAIN PS	PERFORM WEEKLY CHECKLIST	Weekly	01/02/2012	01/23/2012	Pump station has normal flows calculated by pump run times.
2488792	0000142961	TANK DIESEL MAIN PS	PERFORM WEEKLY CHECKLIST	Weekly	02/01/2012	02/29/2012	Main station in good working order.. Pump run times normal.
2488803	0000142961	TANK DIESEL MAIN PS	PERFORM WEEKLY CHECKLIST	Weekly	03/01/2012	03/19/2012	Flows up somewhat due to spring thaw. Lagoon ice covered.
2488814	0000142961	TANK DIESEL MAIN PS	PERFORM WEEKLY CHECKLIST	Weekly	04/02/2012	04/20/2012	Flows normal, Lagoon 90 % full
2488825	0000142961	TANK DIESEL MAIN PS	PERFORM WEEKLY CHECKLIST	Weekly	05/01/2012	05/23/2012	Lagoon Discharge completed, Flows very low due to dry weather.
2488844	0000142206	ALARM DIALER MAIN PS	PERFORM WEEKLY CHECKLIST	Weekly	07/02/2012	07/18/2012	Waste water flows normal.
2488855	0000142206	ALARM DIALER MAIN PS	PERFORM WEEKLY CHECKLIST	Weekly	08/01/2012	08/27/2012	Flow normal for dry season. lagoon has duck weed on surface.
2488866	0000142206	ALARM DIALER MAIN PS	PERFORM WEEKLY CHECKLIST	Weekly	09/03/2012	09/17/2012	Flows low due to dry weather. Lagoon levels good to low.
2488877	0000142206	ALARM DIALER MAIN PS	PERFORM WEEKLY CHECKLIST	Weekly	10/01/2012	10/19/2012	Sewage has low flows due to dry weather. Lagoons ready to be discharged.
2488888	0000142206	ALARM DIALER MAIN PS	PERFORM WEEKLY CHECKLIST	Weekly	11/01/2012	11/27/2012	Lagoon discharge completed effluent clear.
2488899	0000142206	ALARM DIALER MAIN PS	PERFORM WEEKLY CHECKLIST	Weekly	12/03/2012	12/18/2012	Bell line had issues effecting alarm system at outer lift stations, Bell to repair today. Flows are normal.
2488778	0000142206	ALARM DIALER MAIN PS	PERFORM WEEKLY CHECKLIST	Weekly	01/02/2012	01/23/2012	Pump station has normal flows calculated by pump run times.
2488789	0000142206	ALARM DIALER MAIN PS	PERFORM WEEKLY CHECKLIST	Weekly	02/01/2012	02/29/2012	Main station in good working order.. Pump run times normal.
2488800	0000142206	ALARM DIALER MAIN PS	PERFORM WEEKLY CHECKLIST	Weekly	03/01/2012	03/19/2012	Flows up somewhat due to spring thaw. Lagoon ice covered.
2488811	0000142206	ALARM DIALER MAIN PS	PERFORM WEEKLY CHECKLIST	Weekly	04/02/2012	04/20/2012	Flows normal, Lagoon 90 % full
2488822	0000142206	ALARM DIALER MAIN PS	PERFORM WEEKLY CHECKLIST	Weekly	05/01/2012	05/23/2012	Lagoon Discharge completed, Flows very low due to dry weather.
2488833	0000142206	ALARM DIALER MAIN PS	PERFORM WEEKLY CHECKLIST	Weekly	06/01/2012	06/28/2012	System operating normal.
2488846	0000142715	EYEWASH EMERGENCY MAIN PS	PERFORM WEEKLY CHECKLIST	Weekly	07/02/2012	07/18/2012	Waste water flows normal.
2488857	0000142715	EYEWASH EMERGENCY MAIN PS	PERFORM WEEKLY CHECKLIST	Weekly	08/01/2012	08/27/2012	Flow normal for dry season. lagoon has duck weed on surface.

### Facility Work Order Summary

WO #	Equipment #	Equipment Description	Activity Description	Maint. Freq	Scheduled Date	Completion Date	Comments
2488868	0000142715	EYEWASH EMERGENCY MAIN PS	PERFORM WEEKLY CHECKLIST	Weekly	09/03/2012	09/17/2012	Flows low due to dry weather. Lagoon levels good to low.
2488879	0000142715	EYEWASH EMERGENCY MAIN PS	PERFORM WEEKLY CHECKLIST	Weekly	10/01/2012	10/19/2012	Sewage has low flows due to dry weather. Lagoons ready to be discharged.
2488890	0000142715	EYEWASH EMERGENCY MAIN PS	PERFORM WEEKLY CHECKLIST	Weekly	11/01/2012	11/27/2012	Lagoon discharge completed effluent clear.
2488901	0000142715	EYEWASH EMERGENCY MAIN PS	PERFORM WEEKLY CHECKLIST	Weekly	12/03/2012	12/18/2012	Bell line had issues effecting alarm system at outer lift stations, Bell to repair today. Flows are normal.
2488780	0000142715	EYEWASH EMERGENCY MAIN PS	PERFORM WEEKLY CHECKLIST	Weekly	01/02/2012	01/23/2012	Pump station has normal flows calculated by pump run times.
2488791	0000142715	EYEWASH EMERGENCY MAIN PS	PERFORM WEEKLY CHECKLIST	Weekly	02/01/2012	02/29/2012	Main station in good working order.. Pump run times normal.
2488802	0000142715	EYEWASH EMERGENCY MAIN PS	PERFORM WEEKLY CHECKLIST	Weekly	03/01/2012	03/19/2012	Flows up somewhat due to spring thaw. Lagoon ice covered.
2488813	0000142715	EYEWASH EMERGENCY MAIN PS	PERFORM WEEKLY CHECKLIST	Weekly	04/02/2012	04/20/2012	Flows normal, Lagoon 90 % full
2488824	0000142715	EYEWASH EMERGENCY MAIN PS	PERFORM WEEKLY CHECKLIST	Weekly	05/01/2012	05/23/2012	Lagoon Discharge completed, Flows very low due to dry weather.
2488835	0000142715	EYEWASH EMERGENCY MAIN PS	PERFORM WEEKLY CHECKLIST	Weekly	06/01/2012	06/28/2012	System operating normal.
2488848	0000142960	PANEL MCC MAIN PS	PERFORM WEEKLY CHECKLIST	Weekly	07/02/2012	07/18/2012	Waste water flows normal.
2488859	0000142960	PANEL MCC MAIN PS	PERFORM WEEKLY CHECKLIST	Weekly	08/01/2012	08/27/2012	Flow normal for dry season. lagoon has duck weed on surface.
2488870	0000142960	PANEL MCC MAIN PS	PERFORM WEEKLY CHECKLIST	Weekly	09/03/2012	09/17/2012	Flows low due to dry weather. Lagoon levels good to low.
2488881	0000142960	PANEL MCC MAIN PS	PERFORM WEEKLY CHECKLIST	Weekly	10/01/2012	10/19/2012	Sewage has low flows due to dry weather. Lagoons ready to be discharged.
2488892	0000142960	PANEL MCC MAIN PS	PERFORM WEEKLY CHECKLIST	Weekly	11/01/2012	11/27/2012	Lagoon discharge completed effluent clear.
2488903	0000142960	PANEL MCC MAIN PS	PERFORM WEEKLY CHECKLIST	Weekly	12/03/2012	12/18/2012	Bell line had issues effecting alarm system at outer lift stations, Bell to repair today. Flows are normal.
2488782	0000142960	PANEL MCC MAIN PS	PERFORM WEEKLY CHECKLIST	Weekly	01/02/2012	01/23/2012	Pump station has normal flows calculated by pump run times.
2488793	0000142960	PANEL MCC MAIN PS	PERFORM WEEKLY CHECKLIST	Weekly	02/01/2012	02/29/2012	Main station in good working order.. Pump run times normal.
2488804	0000142960	PANEL MCC MAIN PS	PERFORM WEEKLY CHECKLIST	Weekly	03/01/2012	03/19/2012	Flows up somewhat due to spring thaw. Lagoon ice covered.
2488815	0000142960	PANEL MCC MAIN PS	PERFORM WEEKLY CHECKLIST	Weekly	04/02/2012	04/20/2012	Flows normal, Lagoon 90 % full

### Facility Work Order Summary

WO #	Equipment #	Equipment Description	Activity Description	Maint. Freq	Scheduled Date	Completion Date	Comments
2488826	0000142960	PANEL MCC MAIN PS	PERFORM WEEKLY CHECKLIST	Weekly	05/01/2012	05/23/2012	Lagoon Discharge completed, Flows very low due to dry weather.
2488837	0000142960	PANEL MCC MAIN PS	PERFORM WEEKLY CHECKLIST	Weekly	06/01/2012	06/28/2012	System operating normal.
2488967	0000142962	PANEL MCC TAYLOR PS	PERFORM WEEKLY CHECKLIST	Weekly	07/02/2012	07/18/2012	Normal flows and operations.
2488971	0000142962	PANEL MCC TAYLOR PS	PERFORM WEEKLY CHECKLIST	Weekly	08/01/2012	08/27/2012	All system operating normally.
2488975	0000142962	PANEL MCC TAYLOR PS	PERFORM WEEKLY CHECKLIST	Weekly	09/03/2012	09/17/2012	All operating normally.
2488979	0000142962	PANEL MCC TAYLOR PS	PERFORM WEEKLY CHECKLIST	Weekly	10/01/2012	09/27/2012	All ok at this site no issues.
2488983	0000142962	PANEL MCC TAYLOR PS	PERFORM WEEKLY CHECKLIST	Weekly	11/01/2012	11/27/2012	All checks indicated no issues. Pump hours normal.
2488987	0000142962	PANEL MCC TAYLOR PS	PERFORM WEEKLY CHECKLIST	Weekly	12/03/2012	12/18/2012	Station operating normal.
2488943	0000142962	PANEL MCC TAYLOR PS	PERFORM WEEKLY CHECKLIST	Weekly	01/02/2012	01/23/2012	All operations normal at this station.
2488947	0000142962	PANEL MCC TAYLOR PS	PERFORM WEEKLY CHECKLIST	Weekly	02/01/2012	02/29/2012	No problems at this pumps station. pump hours normal.
2488951	0000142962	PANEL MCC TAYLOR PS	PERFORM WEEKLY CHECKLIST	Weekly	03/01/2012	03/19/2012	No problems at this lift station, pump hour are normal.
2488955	0000142962	PANEL MCC TAYLOR PS	PERFORM WEEKLY CHECKLIST	Weekly	04/02/2012	04/20/2012	Pump hours normal for this time of year.
2488959	0000142962	PANEL MCC TAYLOR PS	PERFORM WEEKLY CHECKLIST	Weekly	05/01/2012	05/23/2012	Pump hours normal. All ok
2488963	0000142962	PANEL MCC TAYLOR PS	PERFORM WEEKLY CHECKLIST	Weekly	06/01/2012	06/28/2012	All ok at this station.
2488924	0000142963	METER LEVEL PROUT PS	PERFORM WEEKLY CHECKLIST	Weekly	07/02/2012	07/18/2012	Lift station operating normal.
2488927	0000142963	METER LEVEL PROUT PS	PERFORM WEEKLY CHECKLIST	Weekly	08/01/2012	08/27/2012	Station checks indicates all working normal.
2488930	0000142963	METER LEVEL PROUT PS	PERFORM WEEKLY CHECKLIST	Weekly	09/03/2012	09/17/2012	All pumps running normal. pump hours normal.
2488933	0000142963	METER LEVEL PROUT PS	PERFORM WEEKLY CHECKLIST	Weekly	10/01/2012	09/19/2012	Operations are normal at this site.
2488936	0000142963	METER LEVEL PROUT PS	PERFORM WEEKLY CHECKLIST	Weekly	11/01/2012	11/26/2012	No problems at this lift station, ESA inspected.
2488939	0000142963	METER LEVEL PROUT PS	PERFORM WEEKLY CHECKLIST	Weekly	12/03/2012	12/18/2012	Alarm issues caused by bad bell line, to be repaired.

**APPENDIX C**

**CERTIFICATE OF APPROVAL**



CERTIFICATE OF APPROVAL

SEWAGE

NUMBER 3-0770-95-006

Page 1 of 2

The Corporation of the Town of Bruce Mines  
P.O. Box 220, 56 Taylor Street  
Bruce Mines, Ontario  
P0R 1C0

*You have applied in accordance with Section 53 of the Ontario Water Resources Act for approval of:*

Storm sewers and appurtenances to be constructed in the Town of Bruce Mines, as follows:

<u>STREET</u>	<u>FROM</u>	<u>TO</u>
Tarbutt Street to	approx. 8 m W. of Prout Street	approx. 58 m E. of Crawford Street (Outlet Little Jordan Creek)

including stub storm sewers, catchbasin leads and catchbasins and storm service drains from the main sewer to the street line, all in accordance with the following documents, namely, final plans and specifications prepared by Tulloch & Trivers Limited, Consulting Engineers, and all additional stub storm sewers, catchbasin leads and catchbasins from the main sewer to the street line, not included in the above final plans and specifications as may be approved by the operating authority in the future.

*You are hereby notified that this approval is issued subject to the terms and conditions outlined below:*

**TERMS AND CONDITIONS**

1. The operating authority shall not approve any additional stub storm sewers, catchbasin leads and catchbasins and storm service drains from the main sewer to the street line, not included in the documents referred to above unless it has reviewed the hydraulic capacity of the downstream storm sewer collection system and the sewage treatment works serving them, if any, and has concluded that the additional stub storm sewers, catchbasin leads and catchbasins and storm service drains from the main sewer to the street line, together with all existing and previously approved stub storm sewers, catchbasin leads and catchbasins and storm service drains from the main sewer to the street line will not overload either the downstream storm sewer collection system or the sewage treatment works and has recorded its review and conclusion in writing. This record shall be maintained by the operating authority and shall be summarized in a yearly report to be sent to the District Manager of the Ministry's District Office by February 15th of the following calendar year in which the records were collected.

*The reasons for the imposition of these terms and conditions are as follows:*

1. To ensure that all proposed storm sewer connections, including future connections, will be served adequately by the downstream storm sewer collection system and will be within the treatment capacity of the downstream sewage treatment works both hydraulically and in terms of any

effluent requirements.

CERTIFICATE OF APPROVAL  
SEWAGE  
NUMBER 3-0770-95-006  
Page 2 of 2

*In accordance with Section 100 of the Ontario Water Resources Act, R.S.O. 1990, Chapter 0.40, as amended, you may by written notice served upon me and the Environmental Appeal Board within 15 days after receipt of this Notice, require a hearing by the Board. Section 101 of the Ontario Water Resources Act, provides that the Notice requiring the hearing shall state:*

1. The portions of the approval or each term or condition in the approval in respect of which the hearing is required, and;
2. The grounds on which the applicant intends to rely at the hearing in relation to each portion appealed.

*The Notice should also include:*

3. The name of the appellant;
4. The address of the appellant;
5. The Certificate of Approval number;
6. The date of the Certificate of Approval;
7. The name of the Director;
8. The municipality within which the sewage works are located;

*And the Notice should be signed and dated by the appellant.*

*This Notice must be served upon:*

The Secretary,  
Environmental Appeal Board,  
*Act*,  
112 St. Clair Avenue West,  
Suite 502,  
Toronto, Ontario.  
M4V 1N3

AND

The Director,  
Section 53, *Ontario Water Resources*  
  
Ministry of Environment and Energy,  
250 Davisville Avenue, 3rd Floor,  
Toronto, Ontario.  
M4S 1H2

*The above noted sewage works are approved under Section 53 of the Ontario Water Resources Act.*

*DATED AT TORONTO this 27th day of June, 1995.*

\_\_\_\_\_  
M. Dhalla, P. Eng.,  
Director  
Section 53  
*Ontario Water Resources*

*Act*

HV/ld

Attn.: -K. Vasey, Clerk, Town of Bruce Mines  
cc: -M. D. Thompson, P. Eng., Tulloch & Trivers Limited  
-District Manager, MOEE Sault Ste. Marie District Office

## Town of Bruce Mines

XXXX

sanitary sewers, forcemain, sewage pumping station and facultative lagoon to be constructed in the Town of Bruce Mines as follows:

<u>STREET</u>	<u>FROM</u>	<u>TO</u>
<u>SANITARY SEWERS</u>		
Qunicy St.	Pilgrim St.	Crawford St.
Crawford St.	Approx. 85m north of Atlantic St.	Atlantic St.
Prout St.	Quincy St.	Helca St.
Atlantic St.	Pilgrim St.	Crawford St.
Calumet St.	Pilgrim St.	Prout St.
Helca St.	Pilgrim St.	Prout St.
Bruce Bay Rd.	Helca St.	Approx. 235m south of Helca St.

sewage pumping station located in the Calumet St. right-of-way, east of Prout St. and comprising of:

- prefabricated fibreglass reinforced plastic (FRP) wet well;
  - two (2) submersible sewage pumps (1 duty and 1 standby) each rated at 5.6 L/s at 7.3m TDH;
  - ultrasonic liquid level sensor;
- .....2

22nd

November 1990

Attn : L. Doggett, Clerk, Town of Bruce Mines  
 cc : R. Hore, MOE NE, Reg. Dir.  
 Marshall Macklin Monaghan Ltd.

NS/pm

- piping, electrical and control system;
- connection to existing 60 kW diesel generator

Forcemains

<u>Street</u>	<u>From</u>	<u>To</u>
Prout St.	Pumping Station on Calumet St.	Quincy St.
Quincy St.	Prout St.	Crawford St.

modification to the existing main sewage pumping station, located approximately 18m south of Highway 17 and approximately 24m east of Huron Street, and consisting of:

- replacement of existing dry well with a prefabricated fibreglass reinforced plastic (FRP) wet well pumping station of 3.05m diameter;
- two (2) submersible sewage pumps (1 duty and 1 standby) each rated at 27 L/s at 32m TDH;
- piping, electrical and control systems.

Forcemains

<u>Street</u>	<u>From</u>	<u>To</u>
Highway No. 17	Main Sewage Pumping Station	Cunningham St.
Cunningham St.	Highway No. 17	King St.
King St.	Cunningham St.	Highway No. 561
Easement	Highway No. 561, approx. 61m north of Highway 17	Highway No. 561
Highway No. 561	Easement	Sewage treatment works

An additional facultative lagoon, located adjacent to the east berm of the existing facultative lagoon, with an effective cell volume of approximately 50,100m<sup>3</sup>, surface area 3.34ha, and treatment capacity between the existing and new lagoon, for approximately 567m<sup>3</sup>/d average flow,

including all interconnecting pipework, inlet and outlet works, outfall to and rerouting of approximately 70m of Sucker Creek.

All in accordance with the "Sewerage Works Upgrading Study for the Corporation of the Town of Bruce Mines" report dated August 1989 and prepared by Marshall Macklin Monaghan Limited, Consulting Engineers, at an estimated cost, including engineering and contingencies, of THREE MILLION FIVE HUNDRED THOUSAND DOLLARS (\$3,500,000.00) subject to the following special terms and conditions which are considered necessary by the Director.

SPECIAL TERMS AND CONDITIONS

1. For the purpose of this Certificate of Approval:

- (1) "average concentration" means the arithmetic mean of the concentration of all daily discharges sampled or measured, or both, during the period of operation upon which the report is based;
- (2) "average loading" means the arithmetic mean of the total mass of all daily discharges sampled or measured, or both, during the period of operation upon which the report is based;
- (3) "BOD5" means total five day biochemical oxygen demand; (non-inhibited);
- (4) "Certificate" means the entire within Certificate of Approval issued in accordance with Section 24 of the Ontario Water Resources Act and includes its schedules, if any;
- (5) "Director" means any Ministry employee within the Approvals and Engineering Division of the Ministry appointed by the Minister pursuant to Section 4 of the Ontario Water Resources Act as a Director for the purposes of Sections 6, 24, 25, 26 and 27 of said Act;
- (6) "District Officer" means the District Officer, of the Sudbury District Office of the Ontario Ministry of the Environment, Northeastern Region;
- (7) "grab sample" means a volume of effluent of at least 100 millilitres which is collected over a period not exceeding fifteen minutes and immediately transferred to an appropriate laboratory sample container;
- (8) "kg/d" means kilograms per day;
- (9) "m<sup>3</sup>/d" means cubic metres per day;
- (10) "mg/L" means milligrams per litre;
- (11) "Ministry" means the Ontario Ministry of the Environment;
- (12) "operating authority" means the Ministry of Environment, Utility Operations, Northeastern Region;
- (13) "Owner" means the Town of Bruce Mines and includes its successors and assignees;
- (14) "Provincial Officer" means any Officer or employee of the Ministry designated in writing by the Minister as a Provincial Officer within the meaning of the Ontario Water Resources Act;
- (15) "Regional Director" means the Regional Director of the Northeastern Region of the Ministry;
- (16) "works" means the facility described in the Owner's application, this Certificate and in the supporting documentation referred to herein, to the extent approved by this Certificate;

2. The Owner shall not commence construction of the works or allow its commencement until final detailed design drawings, specifications and engineer's report containing the detailed design calculations have been submitted to the Director and the Director has confirmed in writing his approval of them.
3. Requirements specified in this Certificate are minimum requirements under Section 24 of the Ontario Water Resources Act, and do not abrogate the need to take all steps to avoid violating the provisions of applicable legislation.
4. The requirements of this certificate are severable. If any requirement of this certificate, or the application of any requirement of this certificate to any circumstance, is held invalid, the application of such requirement to other circumstances and the remainder of this certificate shall not be affected thereby.
5. The owner must ensure compliance with all the terms and conditions of this certificate. Non-compliance constitutes a violation of the Ontario Water Resources Act and is grounds for enforcement.
6. The owner shall furnish to the Regional director, any information which the Regional Director may request pursuant to Section 31 of the Ontario Water Resources Act, and copies of any records required to be kept by this Certificate.
7. The owner shall notify the Director and the Regional Director in writing of any of the following changes within 30 days of the change occurring:
  - a) change of owner or operating authority, or both;
  - b) change of address or address of new owner.
8. The owner shall take all reasonable steps to minimize any adverse impact to surface or ground waters resulting from non-compliance with the effluent requirements specified in this Certificate including, but not limited to, such accelerated or additional monitoring as necessary to determine the nature and impact of the discharge in non-compliance.
9.
  - 1) The owner shall prepare and make available for inspection by Ministry employees upon request, a complete set of drawings within one year of substantial completion of the sewage works which drawings shall show the sewage works as constructed at that time.
  - 2) A complete set of the constructed drawings, incorporating any amendments made from time to time, shall be kept by the owner at the administration building of the sewage works as long as the sewage works is kept in operation.

Operation and Maintenance Conditions

10. 1) The operating authority shall ensure that at all times, the sewage works and related equipment and appurtenances which are installed or used to achieve compliance with this Certificate are properly operated and maintained. Proper operation and maintenance includes effective performance, adequate funding, adequate operator staffing and training and adequate laboratory and process controls, including appropriate quality assurance and quality control procedures.
- 2) The operating authority shall ensure that adequate equipment and material are kept on hand, maintained and kept in good repair for immediate use in the event of upset conditions and equipment breakdowns in the sewage works and spills of raw, partly treated sewage, sludge and chemicals, and that personnel are trained in its use and the methods and procedures to be employed.

Performance

11. 1) The sewage treatment works shall be designed, constructed and operated such that the concentrations and total loadings of the materials named below as effluent parameters shall not be exceeded in the effluent from the sewage works, calculated in accordance with Subsection (2):

<u>Effluent Parameter</u>	<u>Non-Compliance Limits</u>	
	<u>Effluent Concentrations</u>	<u>Effluent Waste Loadings</u>
BOD <sub>5</sub>	25 mg/L	259 kg/day
Suspended Solids	25 mg/L	259 kg/day

Note : the waste loading limits are based on ten (10) day discharge period of the waste stabilization pond contents.

- 2)
  - i) Non-compliance with respect to effluent concentration of BOD<sub>5</sub>, and Suspended Solids is deemed to have occurred when the arithmetic mean of a minimum of three (3) consecutive samples taken during discharge period as part of routine sampling program by the operating authority and supplemented by spot sampling by the Ministry staff as necessary, exceeds the corresponding concentration set out in Subsection (1).
  - ii) Non-compliance with respect to waste loadings is deemed to have occurred when the average concentration of either BOD<sub>5</sub>, or Suspended Solids, multiplied by the average daily flow over the discharge period exceeds the corresponding waste loading set out in Subsection (1).



12. Notwithstanding condition No. 11, the discharge shall not contain oil or other substance in amounts sufficient to create a visible film or when on the receiving waters and shall be essentially free of floating and settleable solids.
13.
  - 1) The waste stabilization pond has been designed and approved to treat sewage at an average daily flow of 567m<sup>3</sup>/d.
  - 2) For the purposes of this Certificate and Subsection 66 (3) of the Ontario Water Resources Act, the introduction of sewage flows into the waste stabilization ponds in excess of the average daily flow for any consecutive period of time greater than 183 days is not approved under this Certificate.
14.
  - 1) The sewage works shall be operated on a semi-annual discharge basis with the effluent discharge to occur over a ten (10) day period commencing not earlier than May 1 or terminating later than May 15 in spring and commencing not earlier than November 1 or terminating later than November 15 in fall.
  - 2) The Regional Director may, in writing, agree to or direct that the rate and period of discharge be altered within the physical capability of the sewage works to allow the discharge to coincide with the period of peak flow and maximum dilution in the receiving watercourse.
  - 3) The operating authority shall notify the Regional Director at least twenty four (24) hours prior to the commencement of the sewage works effluent discharge.
15. The operating authority shall ensure that the following monitoring program is carried out:
  - 1) Sampling locations shall be established to the satisfaction of the Regional Director prior to the commencement of operation of the works. Any of these sampling locations may only be changed or abandoned and new locations may be added following commencement of operation if, in the opinion of the Regional Director, it is necessary to do so to ensure representative samples are being collected.
  - 2) Subject to Subsection (1), grab samples shall be collected from each cell of the waste stabilization pond during its discharge.
  - 3) The collection of samples noted in Subsection (2) shall take place as follows:
    - i) A grab sample is to be taken on the first and last day of the discharge period and another grab sample for every 0.5 metre of drawn-down in the pond cells.
    - ii) The sample shall be refrigerated at 4°C throughout the collection period and until analyzed in the laboratory.
    - iii) At least one litre of sample from each sampling location, shall be sent as soon as practicable to a reputable laboratory, acceptable to the Regional Director.

- 4) The samples collected pursuant to Subsection (2) shall be analyzed for:  
  
BOD<sub>5</sub>, Suspended Solids, Total Phosphorous, Ammonia plus Ammonium Nitrogen and Hydrogen Sulphide, using analytical procedures described in Standard Methods for the Examination of Water and Wastewater, Latest edition.
  - 5) The total discharge from each cell shall be estimated and recorded using an established engineering technique acceptable to the Regional Director, so that the effluent waste loading can be calculated.
16. Analytical results from Condition No. 15 (Subsection No. 4) shall be reported to the Regional Director within 90 days of collection of the sample or with such longer period as the Regional Director may agree upon.
17. 1) The operating authority shall submit an annual report to the Regional Director on the performance of the sewage works.
- 2) The first report referred to in Subsection (1) shall be submitted within one year and 90 days following the commencement of operation of the sewage works approved in this Certificate and shall report on the first 12 months or such operation. Each subsequent report shall cover subsequent 12 month period and shall be submitted within 90 days of the completion of the 12 month period being reported upon.
- 3) Each annual report shall contain at least the following information:
- (i) an executive summary;
  - (ii) a tabulation of all sample results including how and where the sample was taken;
  - iii) a tabulation of discharge volumes, including average daily flows for periods reported;
  - iv) a comprehensive interpretation of sewage works effluent loadings and concentrations data for the reporting period;
  - v) an overview of the sludge disposal program including tabulation of quantity of sludge and the disposal areas used during the period being reported upon, together with an outline of the proposed sludge handling methods and disposal areas to be utilized over the next reporting period;
  - vi) a description of any emergency or upset conditions which occurred during the period being reported upon.

Town of Bruce Mines  
Box 220  
56 Taylor Street  
Bruce Mines, Ontario  
P0S 1C0

You are hereby notified that final Certificate of Approval No. 3-0019-90-006 has been issued to you subject to the conditions outlined therein.

The reasons for the imposition of these conditions are as follows:

1. Condition No. 1 is included to define all the terms and to assist in making the meaning of the belowstated conditions clear.
2. Condition No. 2 is included to make the applicant aware that the Director approves in principle the proposed works and is of the opinion that they may be carried out on the basis of sound engineering and environmental principles, notwithstanding that sufficient detailed designs of the works have not been submitted to the Director for a final technical determination.

It is in the public interest to issue this conceptual approval in order that the applicant may know that the Director approves of the general concept of the proposed works before the applicant is put to the expense of preparing detailed plans, specifications and an engineer's report and make whatever other arrangements necessary in connection with this undertaking sufficient for the Director to give an approval to construct.

3. Condition No. 3 is included to emphasize that the issuance of the approval does not diminish the duty of the owner to use all reasonable care in the construction, maintenance and operation of the sewage works, including a duty to mitigate any adverse impacts resulting from any action which results in non-compliance with this Certificate of Approval.
4. Condition No. 4 is included to clarify that the requirements as set out in this Certificate are severable.
5. Condition No. 5 is included to clarify that the owner has to comply with all the terms and conditions of the Certificate.
6. Condition Nos. 6 and 7 are included to allow the Regional Director to obtain the necessary information relating to the construction, ownership, operation and maintenance of the sewage works.

7. Condition No. 8 is included to clarify the owner's responsibilities pertaining to the mitigation of adverse impacts in case of non-compliance with the effluent requirements.
8. Condition No. 9 is included to ensure that a complete set of drawings is available to facilitate operation of the sewage works and for inspection by Ministry personnel.
9. Condition No. 10 is imposed to ensure that the sewage works is properly operated and maintained and that the owner can deal with contingency and/or emergency situations.
10. Condition Nos. 11, 12 and 14 are imposed on the effluent criteria related to BOD<sub>5</sub> and Suspended Solids concentrations in order to minimize adverse effects of oxygen demanding material on dissolved oxygen concentration in the receiving waters.
11. Condition No. 13 is imposed to ensure that the average daily flow rate is within the approved capacity of the sewage works and in order to alert the owner for the need to initiate sewage works expansion.
12. Condition Nos. 15, 16 and 17 are imposed to ensure that all pertinent data are available for the evaluation of the performance of the sewage works, and that sludge disposal program is in compliance with the Provincial Sludge Utilization Guidelines and consistent with any requirements of Part V, Environmental Protection Act.

You may by written notice served upon me and the Environmental Appeal Board within 15 days after receipt of this Notice, require a hearing by the Board. Section 63 of the Ontario Water Resources Act, R.S.O. 1980, C. 361, as amended, provides that the Notice requiring the hearing shall state the portions of each term or condition in the approval in respect of which the hearing is required and the grounds on which you intend to rely at the hearing.

This Notice should be served upon:

The Secretary,  
Environmental Appeal Board,  
112 St. Clair Ave. West,  
5th Floor,  
Toronto, Ontario.  
M4V 1N3

AND

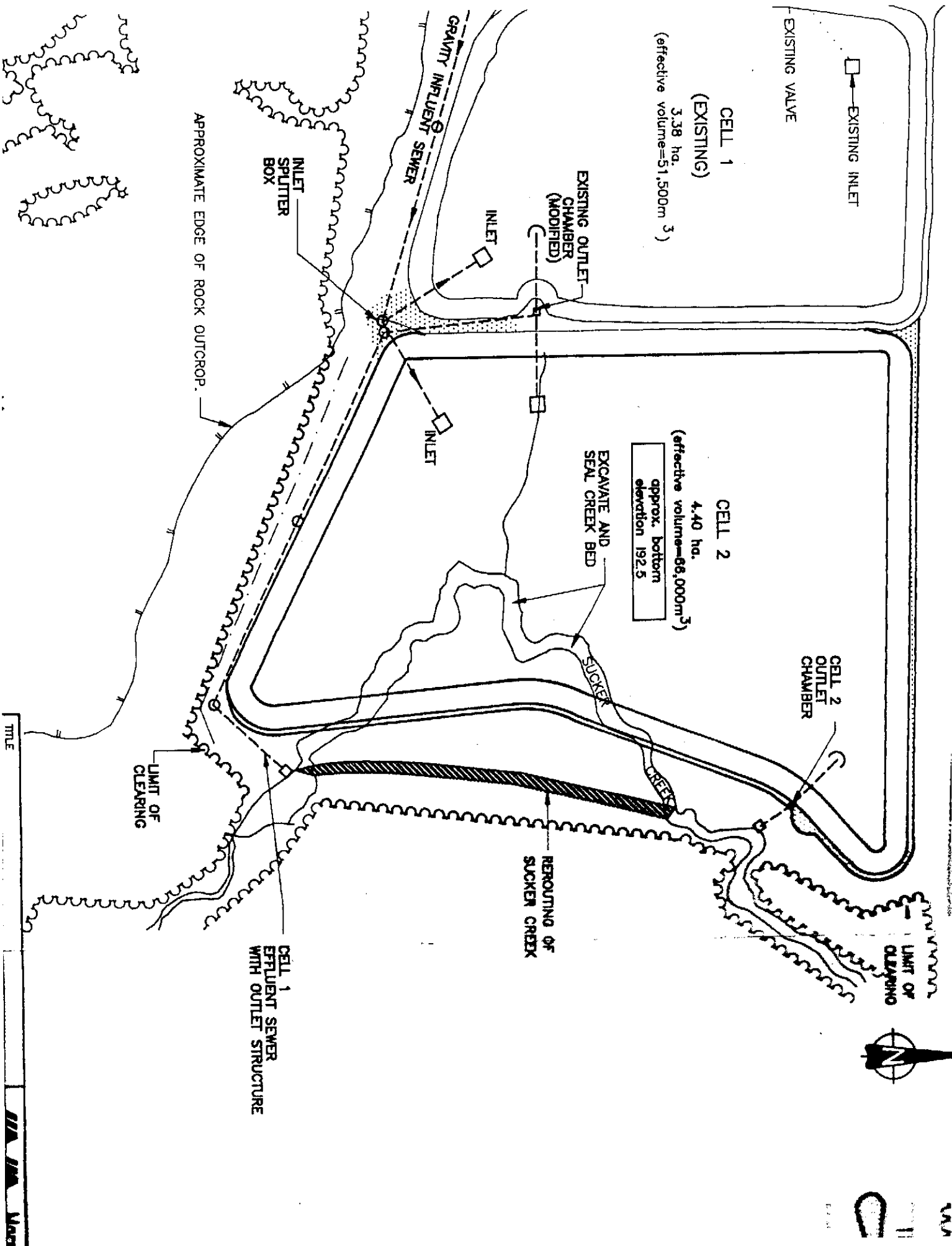
The Director,  
Section 24, O.W.R. Act,  
Ministry of the Environment,  
250 Davisville Avenue,  
Toronto, Ontario.  
M4S 1H2

DATED at Toronto this

day of

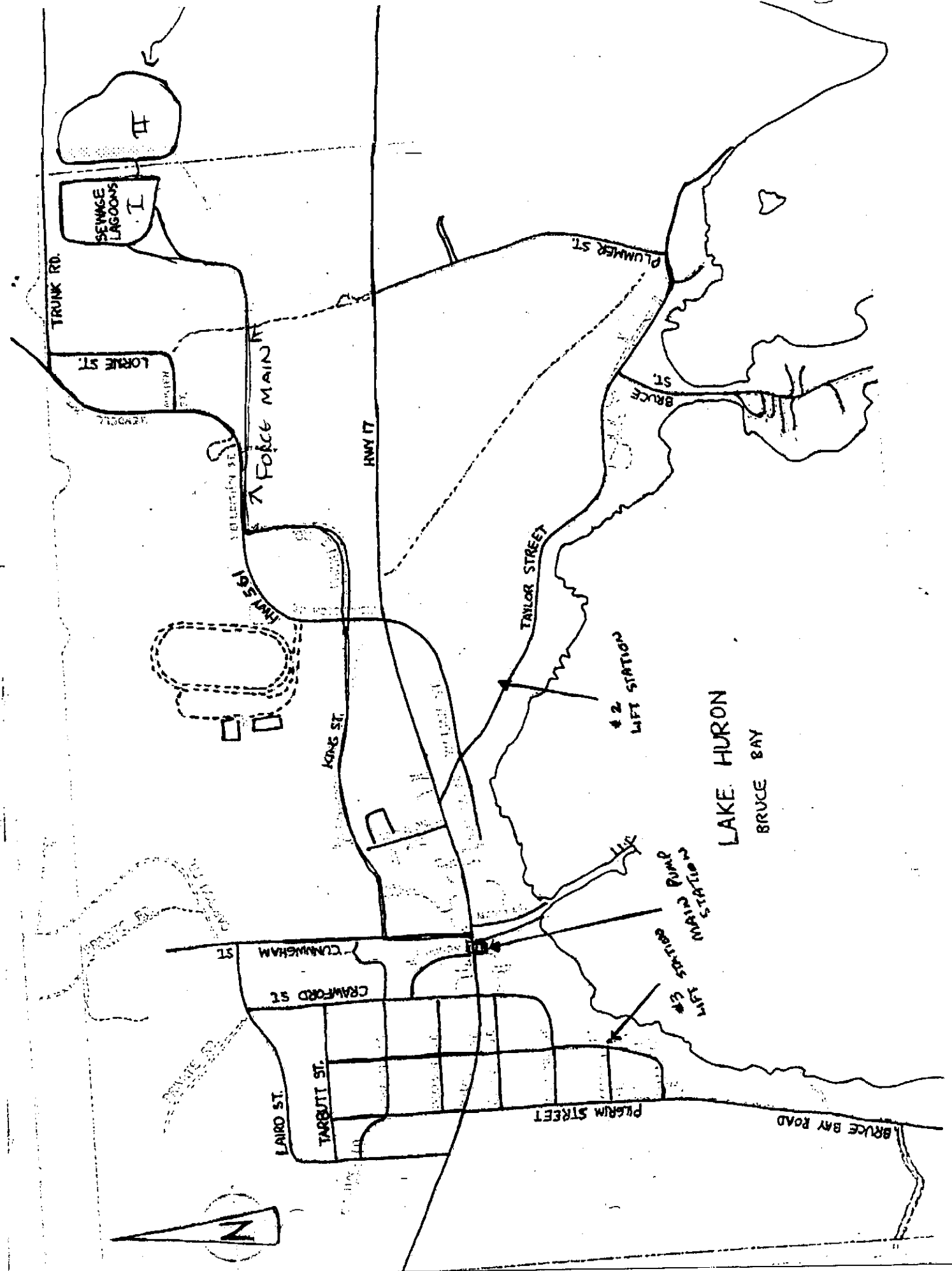
---

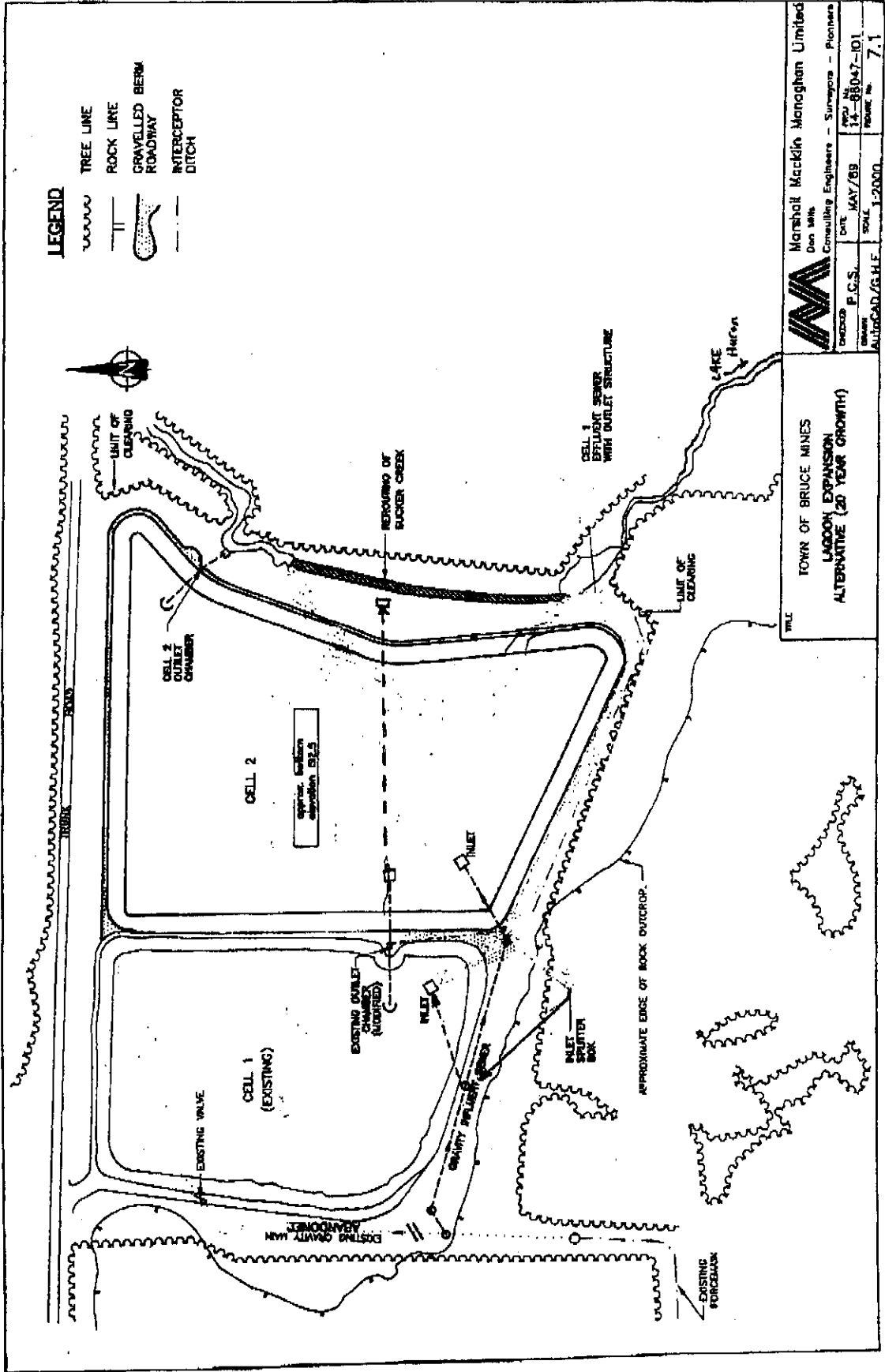
Director,  
Section 24, O.W.R. Act,  
Ministry of the Environment.



TITLE







**TOWN OF BRUCE MINES  
LAGOON EXPANSION  
ALTERNATIVE (20 YEAR GROWTH)**

---

**MM** Marshall Macklin Managhan Limited  
 Don Williams  
 Consulting Engineers - Surveys - Planners

DESIGNER P.C.S.	DATE MAY/89	PROJECT NO. 14-88047-01	SCALE 7:1
AUTOCAD/G.H.F.		SCALE 1:2000	

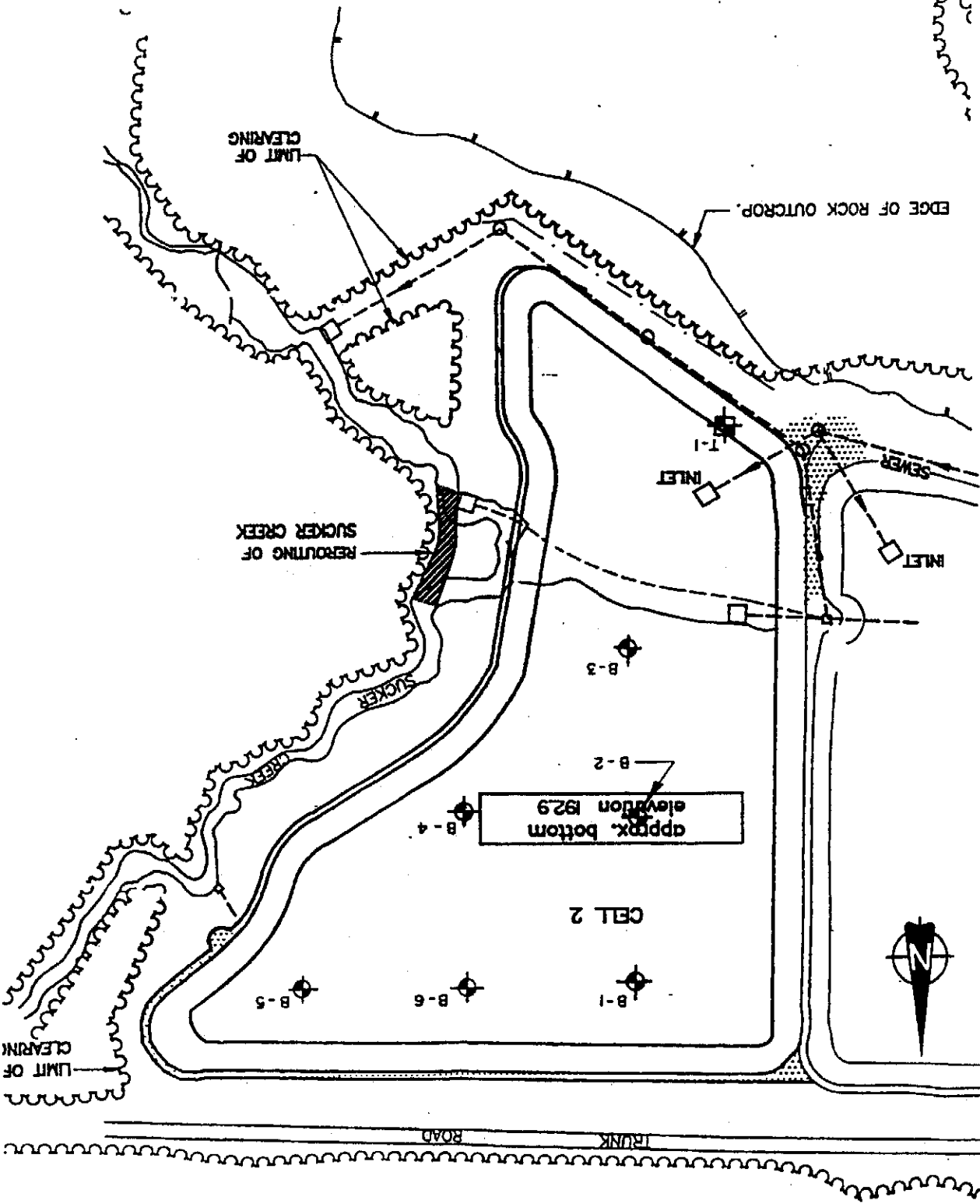
# PLOT PLAN

PREVIOUS BORING BY OTHERS, 1989

TEST PIT FOR THIS INVESTIGATION

## LEGEND:

REFERENCE: PLAN BASE PROVIDED BY MARSHALL MACKIN MONAGHAN LIMITED,  
ENTITLED, TOWN OF BRUCE MINES, LAGOON EXPANSION ALTERNATIVE  
( 18 YEAR GROWTH )



FILE F-891A

BY E.M. DATE 01/23/92

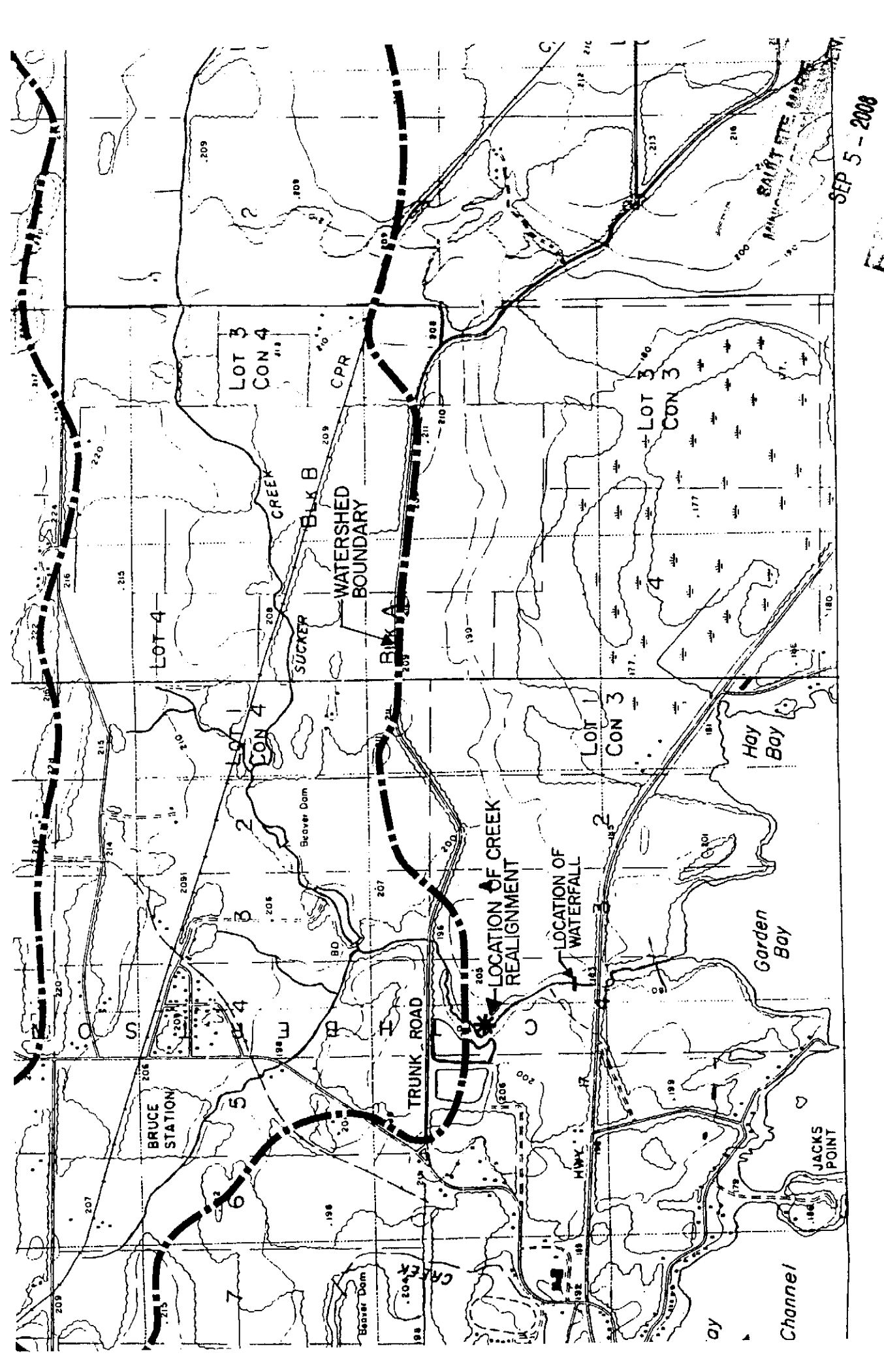
CHECKED BY DATE

REVISIONS

BY DATE  
OF

PLATE OF





SEP 5 - 2008

	Checked by J.I.
	Drawn B.K.

**Title**  
TOWN OF BRUCE MINES  
FISHERIES COMPENSATION PLAN  
WATERSHED BOUNDARY  
OF SUCKER CREEK  
(ABOVE MEANDER)