



**Ontario Clean Water Agency**  
**Agence Ontarienne Des Eaux**

**Bruce Mines  
Lagoon**

**Annual Operating Report**

January 1, 2011 to December 31, 2011

March 06, 2012

Ministry of the Environment  
289 Bay Street, 3<sup>rd</sup> Floor  
Sault Ste. Marie, Ontario  
P6A 1W7

**SUBJECT: Bruce Mines Lagoon  
Bruce Mines, ON  
Certificate of Approval (C of A) #3-0019-90-006  
2011 Annual Report**

*i) An executive summary;*

The enclosed 2011 Report for the above-referenced facility summarizes the performance and related activities in accordance with Certificate of Approval #3-0019-90-006; Section 7.3 ii) through vi) as follows:

*ii) A tabulation of all sample results including how and where the sample was taken;*

**Monitoring Program as per above-referenced C of A:**

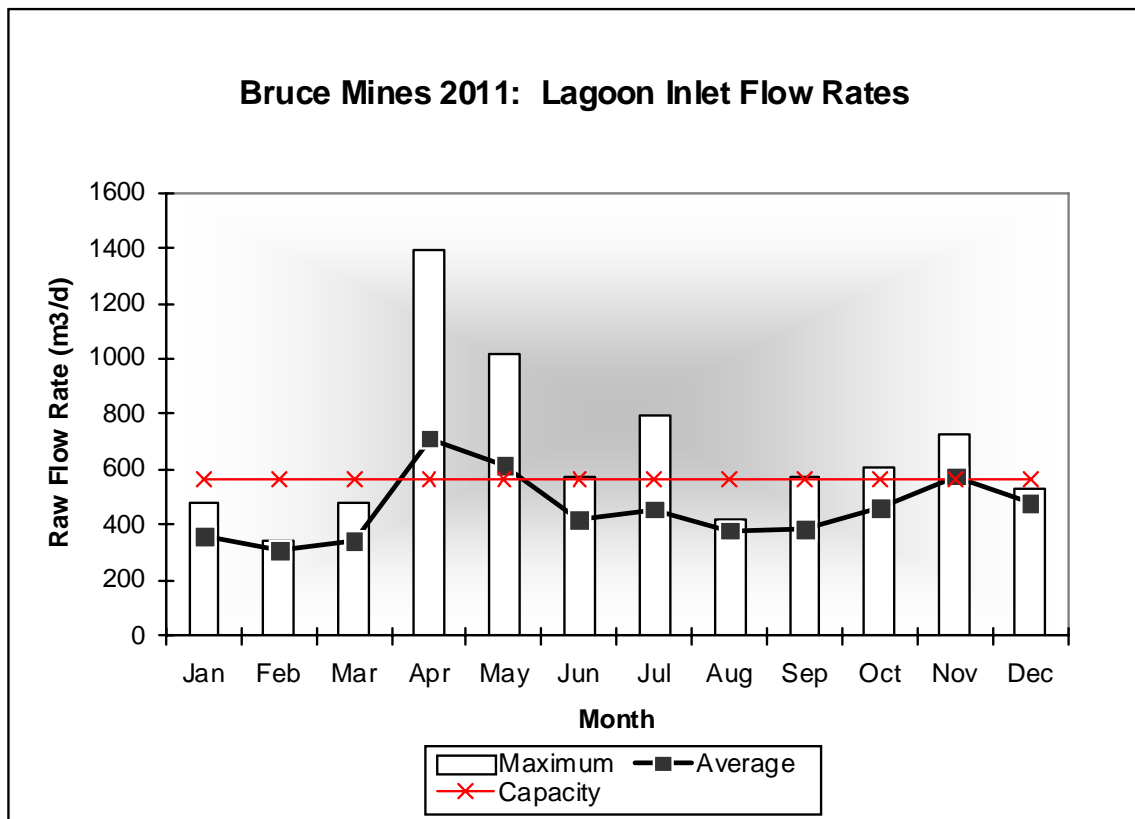
Source (Grab)	Parameter	Frequency	Method
Influent	Flow (m3)	Daily	Flow Meter
	BOD <sub>5</sub> , TSS, TP	Monthly	External Analysis
Effluent	Flow (m3)	Daily	Estimated
During Discharge	BOD <sub>5</sub> , TSS, TP, H <sub>2</sub> S	Every 0.5 m	External Analysis
	NH <sub>3</sub> +NH <sub>4</sub> (Ammonia)	Every 0.5 m	External Analysis

Based on the above monitoring program, the sewage works provided adequate treatment within the required average daily flows while providing a quality effluent. All analytical results for the 2011 reporting period are attached as Appendix A in the Monthly PDC where lab results are automatically uploaded to our PDC program. A copy of the Certificate of Approval is attached under Appendix C.

iii) A tabulation of volumes, including average daily flows for periods reported;

**2011 Monthly Flow Summary**

Month	Monthly Total Flow (m3)	Average Daily Flow (m3/d)	Peak Daily Flow (m3/d)	Discharge Flow (m3)
January	11,057	357	482	
February	8,571	306	340	
March	10,680	345	477	
April	21,353	712	1,390	
May	19,080	615	1,013	96,120
June	12,642	421	571	
July	14,175	457	796	
August	11,766	380	422	
September	11,620	387	573	
October	14,343	463	609	
November	17,265	576	727	87,151
December	14,899	481	531	
<b>Summary</b>		<b>459</b>	<b>1,390</b>	
<b>2011 TOTAL</b>	<b>167,450</b>			<b>183,271</b>



Flows measured into the lagoon did exceed the specified average daily flow of 567.0 m<sup>3</sup>/day in April, May and November of 2011. Compliance with the C of A was achieved due to the fact that the exceeded flows did not occur for 183 consecutive days at any point in 2011. The average daily flow for 2011 459m<sup>3</sup>/d was approximately 81% of the rated capacity. The highest recorded peak flow occurred in September of 1,390 m<sup>3</sup>/d approximately 245% of the rated capacity.

*iv) A comprehensive interpretation of the sewage works effluent concentrations data for the reporting period;*

### 2011 Raw/Effluent Quality Data

Source	Parameter	Average	Min	Max	Compliance
Raw	TSS (mg/L)	136	50	536	
	TP (mg/L)	2.20	1.09	5.87	
	BOD5 (mg/L)	103.2	57	207	
Effluent (1)	BOD5 (mg/L)	7.6	2.0	22.0	25.0 (Monthly)
	TSS (mg/L)	11.0	5.0	19.0	25.0 (Monthly)
	TP (mg/L)	1.31	0.48	1.76	
	Ammonia (mg/L)	2.4	0.5	4.7	
	H <sub>2</sub> S (mg/L)	<0.02	<0.006	0.039	
Effluent (2)	BOD5 (mg/L)	9.6	4.0	33.0	25.0 (Monthly)
	TSS (mg/L)	11.3	5.0	23.0	25.0 (Monthly)
	TP (mg/L)	1.02	0.34	1.58	
	Ammonia (mg/L)	1.43	0.1	5.2	
	H <sub>2</sub> S (mg/L)	<0.022	<0.006	0.03	

The average concentrations for the above parameters were within the compliance limits specified in the facility C of A. Refer to Appendix A for the monthly and annual summary of the above sampling data including loading calculations.

*A summary of any effluent quality assurance or control measures undertaken during the reporting period;*

The effluent parameters specified in the above table are analyzed by SGS Lakefield Research, an accredited laboratory located in Lakefield, Ontario.

In-house tests are conducted by licensed Operators for monitoring purposes using Standard Methods and the data generated from these tests is used to determine the treatment efficiency while maintaining process control. All in-house monitoring equipment is calibrated based on the manufactures recommendations.

***v) An overview of the sludge disposal program including tabulation of quantity of sludge and the disposal areas used during the period being reported upon, together with an outline of the proposed sludge handling methods and disposal areas to be utilized over the next reporting period;***

There was no sludge removed from the lagoon for this reporting period. It is projected that there will be no sludge removed from the lagoon for the next reporting period.

***vi) A description of any emergency or upset conditions which occurred during the period being reported upon;***

There were no upset conditions to report in 2011.

***A summary of all maintenance carried out on any major structure, equipment, apparatus, mechanism or thing forming a part of the works;***

Plant maintenance, including non-scheduled maintenance is monitored using the Hansen Preventative Maintenance software program. See Appendix B for a summary. All routine and preventative maintenance was conducted as scheduled in 2011.

***An account of any environmental and operating problems encountered at the site of the sewage treatment plant and the mitigative measures taken during the reporting period;***

There were no environmental or operating problems encountered during 2011.

***A summary of any alterations, extensions or replacements in the process or operations of the works which are considered for implementation over the next reporting period, especially those which may require approval under the Ontario Water Resources Act;***

Replacements and improvements were conducted in 2011 as follows:

Lagoon vegetation and Cattail Control	\$	7,138.00
Milltronic replacement at Taylor PS	\$	1,650.00
Electrical work on Taylor street pump station	\$	2,571.00
New batteries for generator	\$	643.00

There was one sewer connection added and two removed in the collection system during 2011. There are not any alterations, extensions or replacements in the forecast for the next reporting period.

There has not been an MOE inspection since October 9, 2009 which was included in the last reporting period.

Best Regards,

Dan Clark  
Process & Compliance Technician  
Espanola Hub  
c.c. Donna Brunke, Town of Bruce Mine

## **Appendix A**

# **Performance Assessment Report & Monthly Process Data Report**



# Ontario Clean Water Agency Performance Assessment Report Wastewater/Lagoon

From 01/01/2011 to 12/31/2011

Facility: [5934] - Bruce Mines Wastewater Treatment Plant & Collection System  
Works: [110001756] - Bruce Mines Wastewater Treatment Plant & Collection System

	01/2011	02/2011	03/2011	04/2011	05/2011	06/2011	07/2011	08/2011	09/2011	10/2011	11/2011	12/2011	<-- Total -->	<-- Avg. -->	<-- Max. -->	<-- Criteria-->
<b>Flow:</b>																
Raw: Total Flow 1000 m3	11.057	8.571	10.68	21.353	19.08	12.642	14.175	11.766	11.62	14.343	17.265	14.899	167.45			
Raw: Avg. Day Flow 1000 m3/day	0.357	0.306	0.345	0.712	0.615	0.421	0.457	0.38	0.387	0.463	0.576	0.481		0.459		
Raw: Max. Day Flow 1000 m3/day	0.482	0.34	0.477	1.39	1.013	0.571	0.796	0.422	0.573	0.609	0.727	0.531			1.39	
Eff: Total Flow 1000 m3					96.12						87.151		183.271			
Eff: Avg. Day Flow 1000 m3/day					6.408						5.81			6.109		
Eff: Max. Day Flow 1000 m3/day					10.779						11.054				11.054	
<b>Biochemical O2 Demand:</b>																
Raw: Avg. BOD5 (mg/L)	69.0	171.0	111.0	72.0	82.0	106.0	107.0	207.0	94.0	57.0	75.0	87.0		103.167	207.0	
Raw: Number of Samples BOD5	1.0	1.0	1.0	1.0	1.0	1.0	1.0	1.0	1.0	1.0	1.0	1.0	12.0			
Eff: Avg. BOD5 (mg/L)					10.583						6.833			8.708	33.0	25.0
Eff: Number of Samples BOD5					12.0						12.0		24.0			
BOD Loading (kg/d)					67.818						39.702			53.76	67.818	259.0
BOD5 Percent Removal					87.093						90.889				90.889	
<b>Suspended Solids:</b>																
Raw: Avg. SS (mg/L)	50.0	72.0	84.0	82.0	120.0	142.0	184.0	536.0	116.0	68.0	74.0	105.0		136.083	536.0	
Raw: Number of Samples SS	1.0	1.0	1.0	1.0	1.0	1.0	1.0	1.0	1.0	1.0	1.0	1.0	12.0			
Eff: Avg. SS (mg/L)					14.583						7.75			11.167	23.0	25.0
Eff: Number of Samples SS					12.0						12.0		24.0			
SS Loading (kg/d)					93.45						45.028			69.239	93.45	259.0
SS Percent Removal					87.847						89.527				89.527	
<b>Phosphorus:</b>																
Raw: Avg. Phos (mg/L)	2.92	1.92	1.41	1.87	2.0	2.35	1.9	5.87	2.26	1.09	1.2	1.56		2.196	5.87	
Raw: Number of Samples Phos	1.0	1.0	1.0	1.0	1.0	1.0	1.0	1.0	1.0	1.0	1.0	1.0	12.0			

- Note: 1. The Total, Average, Max and Criteria summaries are not included in the wastewater XML files submitted to the MOE.  
2. The annual average concentrations are calculated by taking the arithmetic mean of the monthly average concentration in the effluent calculated for any particular calendar year.

Parameters List: OCWA PDC - MEWS

CBOD5 - Carbonaceous Biochemical Oxygen Demand 5 Day; BOD5 - Biochemical Oxygen Demand, 5 Day, Total Demand; Suspended Solids - Residue, Particulate; NH3 + NH4 as N - Ammonium + Ammonia, Total Unfil. React. ; Total Phosphorus - Phosphorus, Unfiltered Total  
TKN - Nitrogen, Total Kjeldahl Unf. Tot; Nitrate as N - Nitrate, Unfiltered Reactive; Nitrite as N - Nitrite, Unfiltered Reactive; E coli - Escherichia Coli MF

Legend:

Tag group:

Eff-Final Effluent Total, Eff1-Final Effluent 1, Eff2-Final Effluent 2, Raw-Raw Sewage



**Ontario Clean Water Agency  
Performance Assessment Report Wastewater/Lagoon**

From 01/01/2011 to 12/31/2011

Facility: [5934] - Bruce Mines Wastewater Treatment Plant & Collection System  
Works: [110001756] - Bruce Mines Wastewater Treatment Plant & Collection System

	01/2011	02/2011	03/2011	04/2011	05/2011	06/2011	07/2011	08/2011	09/2011	10/2011	11/2011	12/2011	<-- Total -->	<-- Avg. -->	<-- Max. -->	<-- Criteria-->
<b>Phosphorus:</b>																
Eff: Avg. Phos (mg/L)					1.229						1.076			1.153	1.76	5.0
Eff: Number of Samples Phos					12.0						12.0		24.0			
Phos. Loading (kg/d)					7.877						6.251			7.064	7.877	5.0
Total Phos Percent Removal					38.542						10.347				38.542	
<b>Nitrogen Series:</b>																
Eff: Avg. NH3 + NH4 (mg/L)					2.942						0.792			1.867	5.2	5.0
Eff: Number of Samples NH3 + NH4					12.0						12.0		24.0			
NH3 + NH4 Loading (kg/d)					18.85						4.6			11.725	18.85	5.0

Note: 1. The Total, Average, Max and Criteria summaries are not included in the wastewater XML files submitted to the MOE.

2. The annual average concentrations are calculated by taking the arithmetic mean of the monthly average concentration in the effluent calculated for any particular calendar year.

Parameters List: OCWA PDC - MEWS

CBOD5 - Carbonaceous Biochemical Oxygen Demand 5 Day; BOD5 - Biochemical Oxygen Demand, 5 Day, Total Demand; Suspended Solids - Residue, Particulate; NH3 + NH4 as N - Ammonium + Ammonia, Total Unfil. React. ; Total Phosphorus - Phosphorus, Unfiltered Total  
TKN - Nitrogen, Total Kjeldahl Unf. Tot; Nitrate as N - Nitrate, Unfiltered Reactive; Nitrite as N - Nitrite, Unfiltered Reactive; E coli - Escherichia Coli MF

Legend:

Tag group:

Eff-Final Effluent Total, Eff1-Final Effluent 1, Eff2-Final Effluent 2, Raw-Raw Sewage





# Ontario Clean Water Agency Monthly Process Data Report

Municipality: Town of Bruce Mines  
 Facility: [5934] - Bruce Mines Wastewater Treatment Plant & Collection System  
 Works: [110001756] - Bruce Mines Wastewater Treatment Plant & Collection System  
 Classification: Class 1 Wastewater Treatment  
 Receiver: Sucker Creek

Period: 01/01/2011 to 12/31/2011  
 Serviced Population: 271  
 Total Design Capacity(m<sup>3</sup>/day): 567.0

	Jan/2011	Feb/2011	Mar/2011	Apr/2011	May/2011	Jun/2011	Jul/2011	Aug/2011	Sep/2011	Oct/2011	Nov/2011	Dec/2011	<-- Summary -->
--	----------	----------	----------	----------	----------	----------	----------	----------	----------	----------	----------	----------	-----------------

**Raw Sewage\Flows - Raw Sewage**

**Raw Flow: Sum (m3/d)**

Avg	356.672	306.101	344.51	711.756	615.499	421.409	457.263	379.535	387.334	462.664	575.503	480.618	458.768
Max	481.802	339.895	477.022	1,389.959	1,012.93	570.624	796.199	421.826	572.622	609.223	727.289	531.344	1,389.959
Min	303.896	279.261	268.93	428.331	411.155	357.094	341.768	337.67	284.041	343.755	441.557	450.269	268.93
Sum	11,056.817	8,570.815	10,679.799	21,352.682	19,080.462	12,642.278	14,175.166	11,765.59	11,620.028	14,342.599	17,265.098	14,899.154	167,450.489

**Raw Sewage\Raw Sewage - Raw Sewage**

**BOD5 (mg/L)**

Avg	69.0	171.0	111.0	72.0	82.0	106.0	107.0	207.0	94.0	57.0	75.0	87.0	103.167
Max	69.0	171.0	111.0	72.0	82.0	106.0	107.0	207.0	94.0	57.0	75.0	87.0	207.0
Min	69.0	171.0	111.0	72.0	82.0	106.0	107.0	207.0	94.0	57.0	75.0	87.0	57.0

**Suspended Solids (mg/L)**

Avg	50.0	72.0	84.0	82.0	120.0	142.0	184.0	536.0	116.0	68.0	74.0	105.0	136.083
Max	50.0	72.0	84.0	82.0	120.0	142.0	184.0	536.0	116.0	68.0	74.0	105.0	536.0
Min	50.0	72.0	84.0	82.0	120.0	142.0	184.0	536.0	116.0	68.0	74.0	105.0	50.0

**Total Phosphorus (mg/L)**

Avg	2.92	1.92	1.41	1.87	2.0	2.35	1.9	5.87	2.26	1.09	1.2	1.56	2.196
Max	2.92	1.92	1.41	1.87	2.0	2.35	1.9	5.87	2.26	1.09	1.2	1.56	5.87
Min	2.92	1.92	1.41	1.87	2.0	2.35	1.9	5.87	2.26	1.09	1.2	1.56	1.09

**Final Effluent\Flows - Final Effluent 1**

**Final Eff. Flow: Sum (m3/d)**

Avg					2,844.533						3,555.889		3,111.292
Max					5,689.0						4,267.0		5,689.0
Min					1,422.0						2,133.0		1,422.0
Sum					42,668.0						32,003.0		74,671.0

**Final Effluent\Effluent - Final Effluent 1**

**BOD5 (mg/L)**

Avg					10.667						4.0		7.636
Max					22.0						8.0		22.0
Min					5.0						2.0		2.0

**Suspended Solids (mg/L)**

Avg					14.0						7.4		11.0
Max					19.0						9.0		19.0
Min					5.0						6.0		5.0



# Ontario Clean Water Agency Monthly Process Data Report

Municipality: Town of Bruce Mines  
 Facility: [5934] - Bruce Mines Wastewater Treatment Plant & Collection System  
 Works: [110001756] - Bruce Mines Wastewater Treatment Plant & Collection System  
 Classification: Class 1 Wastewater Treatment  
 Receiver: Sucker Creek

Period: 01/01/2011 to 12/31/2011  
 Serviced Population: 271  
 Total Design Capacity(m<sup>3</sup>/day): 567.0

	Jan/2011	Feb/2011	Mar/2011	Apr/2011	May/2011	Jun/2011	Jul/2011	Aug/2011	Sep/2011	Oct/2011	Nov/2011	Dec/2011	<-- Summary -->
<b>Final Effluent\Effluent - Final Effluent 1</b>													
<b>Total Phosphorus (mg/L)</b>													
Avg					1.327						1.29		1.31
Max					1.76						1.36		1.76
Min					0.48						1.24		0.48
<b>NH3 + NH4 as N (mg/L)</b>													
Avg					3.25						1.34		2.382
Max					4.7						1.6		4.7
Min					0.5						1.0		0.5
<b>BOD5 (kg/d)</b>													
Avg					34.493						14.792		25.538
Max					62.59						34.136		62.59
Min					7.11						5.69		5.69
<b>Suspended Solids (kg/d)</b>													
Avg					48.122						27.024		38.532
Max					102.402						38.403		102.402
Min					10.665						12.798		10.665
<b>Total Phosphorus (kg/d)</b>													
Avg					3.737						4.618		4.138
Max					5.227						5.803		5.803
Min					2.503						2.666		2.503
<b>NH3 + NH4 as N (kg/d)</b>													
Avg					8.605						4.836		6.892
Max					14.224						6.827		14.224
Min					2.845						2.133		2.133
<b>Final Effluent\Effluent - Final Effluent 2</b>													
<b>BOD5 (mg/L)</b>													
Avg					10.5						< 8.857		< 9.615
Max					24.0						33.0		33.0
Min					4.0						< 4.0		< 4.0
<b>Suspended Solids (mg/L)</b>													
Avg					15.167						8.0		11.308
Max					23.0						13.0		23.0
Min					6.0						5.0		5.0



## Ontario Clean Water Agency Monthly Process Data Report

Municipality: Town of Bruce Mines  
 Facility: [5934] - Bruce Mines Wastewater Treatment Plant & Collection System  
 Works: [110001756] - Bruce Mines Wastewater Treatment Plant & Collection System  
 Classification: Class 1 Wastewater Treatment  
 Receiver: Sucker Creek

Period: 01/01/2011 to 12/31/2011  
 Serviced Population: 271  
 Total Design Capacity(m<sup>3</sup>/day): 567.0

	Jan/2011	Feb/2011	Mar/2011	Apr/2011	May/2011	Jun/2011	Jul/2011	Aug/2011	Sep/2011	Oct/2011	Nov/2011	Dec/2011	<-- Summary -->	
<b>Final Effluent\Effluent - Final Effluent 2</b>														
<b>Total Phosphorus (mg/L)</b>														
Avg					1.132						0.923		1.019	
Max					1.58						1.19		1.58	
Min					0.55						0.34		0.34	
<b>NH3 + NH4 as N (mg/L)</b>														
Avg					2.633					< 0.4		<	1.431	
Max					5.2					0.8			5.2	
Min					1.6					< 0.1		<	0.1	
<b>BOD5 (kg/d)</b>														
Avg					36.766						43.025		40.136	
Max					81.456						139.986		139.986	
Min					13.576						3.396		3.396	
<b>Suspended Solids (kg/d)</b>														
Avg					53.875						41.692		47.315	
Max					78.062						88.231		88.231	
Min					20.364						7.641		7.641	
<b>Total Phosphorus (kg/d)</b>														
Avg					4.144						5.359		4.799	
Max					8.042						8.077		8.077	
Min					1.935						0.289		0.289	
<b>Final Effluent\Flows - Final Effluent 2</b>														
<b>Final Eff. Flow: Sum (m3/d)</b>														
Sum					53,452.0						55,148.0		108,600.0	
<b>Lagoon\Effluent - Final Effluent 1</b>														
<b>Sulphide (mg/L)</b>														
Avg				<	0.024						<	0.014	<	0.02
Max					0.034						0.039			0.039
Min				<	0.02						<	0.006	<	0.006
<b>Lagoon\Effluent - Final Effluent 2</b>														
<b>Sulphide (mg/L)</b>														
Avg				<	0.022						<	0.011	<	0.016
Max					0.03						<	0.02		0.03
Min				<	0.02						<	0.006	<	0.006

Note: ? Calculation not verifiable. At least one result reported as < and at least one result reported >.

## **Appendix B**

### **Maintenance Summary**

**Facility Work Order Summary**  
**BRUCE MINES WWTP & CS [5934]**  
 Scheduled Date from Jan 1, 2011 to Dec 31, 2011

WO #	Equipment #	Equipment Description	Activity Description	Maint. Freq	Scheduled Date	Completion Date	Comments
2226276	0000127635	ENGINE DIESEL MAIN PS	ENGINE DIESEL	Monthly	01/03/2011	01/20/2011	TESTED GENERATOR UNDER LOAD ONE HOUR ALL SEEMS GOOD.
2226290	0000142206	ALARM DIALER	ALARM DIALER	Monthly	01/03/2011	01/27/2011	DOOR ALARM CHECKED AND ALL WORKING NORMAL
2231913	0000142960	MAIN MCC PANEL	PERFORM WEEKLY CHECKLIST	Weekly	01/03/2011	01/28/2011	FLOWS NORMAL AND RAW WASTE WATER SAMPLED
2231912	0000142961	TANK DIESEL MAIN PS	PERFORM WEEKLY CHECKLIST	Weekly	01/03/2011	01/28/2011	FLOWS NORMAL AND RAW WASTE WATER SAMPLED
2231903	0000127620	PANEL TRANSFER 01 GENSET	PERFORM WEEKLY CHECKLIST	Weekly	01/03/2011	01/28/2011	FLOWS NORMAL AND RAW WASTE WATER SAMPLED
2231911	0000142715	EYEWASH EMERGENCY	PERFORM WEEKLY CHECKLIST	Weekly	01/03/2011	01/28/2011	FLOWS NORMAL AND RAW WASTE WATER SAMPLED
2231904	0000127635	ENGINE DIESEL MAIN PS	PERFORM WEEKLY CHECKLIST	Weekly	01/03/2011	01/28/2011	FLOWS NORMAL AND RAW WASTE WATER SAMPLED
2231905	0000127636	PANEL CONTROL GENERATOR	PERFORM WEEKLY CHECKLIST	Weekly	01/03/2011	01/28/2011	FLOWS NORMAL AND RAW WASTE WATER SAMPLED
2231906	0000127638	PUMP SUBM #1	PERFORM WEEKLY CHECKLIST	Weekly	01/03/2011	01/28/2011	FLOWS NORMAL AND RAW WASTE WATER SAMPLED
2231907	0000127639	PUMP SUBM #2	PERFORM WEEKLY CHECKLIST	Weekly	01/03/2011	01/28/2011	FLOWS NORMAL AND RAW WASTE WATER SAMPLED
2231908	0000127640	METER LEVEL 01 MAIN PS	PERFORM WEEKLY CHECKLIST	Weekly	01/03/2011	01/28/2011	FLOWS NORMAL AND RAW WASTE WATER SAMPLED
2231910	0000114653	OUTPOST 5 PANEL BRUCE MINE SPS	PERFORM WEEKLY CHECKLIST	Weekly	01/03/2011	01/28/2011	FLOWS NORMAL AND RAW WASTE WATER SAMPLED
2231909	0000142206	ALARM DIALER	PERFORM WEEKLY CHECKLIST	Weekly	01/03/2011	01/28/2011	FLOWS NORMAL AND RAW WASTE WATER SAMPLED
2232036	0000127623	PUMP SUBM 02	PERFORM WEEKLY CHECKLIST	Weekly	01/03/2011	01/28/2011	LIFT STATION CHECKED AND NO ISSUES.
2232035	0000127622	PUMP SUBM 01	PERFORM WEEKLY CHECKLIST	Weekly	01/03/2011	01/28/2011	LIFT STATION CHECKED AND NO ISSUES.
2232073	0000127619	PUMP SUBM #2	PERFORM WEEKLY CHECKLIST	Weekly	01/03/2011	01/28/2011	RELAY/CONTACT FOR # 1 PUMP HAD TO BE RESET TWICE IN THE LAST MONTH. RAISED THE AMP SETTING BY ONE AMP. PUMP CHECKED AND SEEMS TO PUMP NORMAL.
2232037	0000142963	METER LEVEL PROUT ST.	PERFORM WEEKLY CHECKLIST	Weekly	01/03/2011	01/28/2011	LIFT STATION CHECKED AND NO ISSUES.

### Facility Work Order Summary

WO #	Equipment #	Equipment Description	Activity Description	Maint. Freq	Scheduled Date	Completion Date	Comments
2232071	0000127617	METER LEVEL TAYOR ST.	PERFORM WEEKLY CHECKLIST	Weekly	01/03/2011	01/28/2011	RELAY/CONTACT FOR # 1 PUMP HAD TO BE RESET TWICE IN THE LAST MONTH. RAISED THE AMP SETTING BY ONE AMP. PUMP CHECKED AND SEEMS TO PUMP NORMAL.
2232072	0000127618	PUMP SUBM 01	PERFORM WEEKLY CHECKLIST	Weekly	01/03/2011	01/28/2011	RELAY/CONTACT FOR # 1 PUMP HAD TO BE RESET TWICE IN THE LAST MONTH. RAISED THE AMP SETTING BY ONE AMP. PUMP CHECKED AND SEEMS TO PUMP NORMAL.
2232074	0000142962	TAYLOR STREET MCC PANEL	PERFORM WEEKLY CHECKLIST	Weekly	01/03/2011	01/28/2011	RELAY/CONTACT FOR # 1 PUMP HAD TO BE RESET TWICE IN THE LAST MONTH. RAISED THE AMP SETTING BY ONE AMP. PUMP CHECKED AND SEEMS TO PUMP NORMAL.
2226268	0000114653	OUTPOST 5 PANEL BRUCE MINE SPS	OUTPOST 5	Annually	04/11/2011	01/28/2011	UNIT SEEMS TO BE WORKING NORMAL
2226316		Facility	FACILITY EMERGENCY PLAN R	OG35	01/03/2011	01/28/2011	EMERGENCY PLAN CONITNGENCIES HAVE BEEN REVIEWED (5), AND ONE (1) HAS BEEN TESTED.
2226304		Facility	OHSA WORKPLACE SAFETY INS	OG15	01/03/2011	01/28/2011	NO ISSUES
2226317		Facility	FEP CONTINGENCY SITE PLAN		01/03/2011	01/28/2011	CONTACT UP TO DATE AND BINDER ON SITE
2226318		Facility	FEP CONTACT LIST		01/03/2011	01/28/2011	ALL OK
2226305		Facility	OHSA WORKPLACE SAFETY INS	OG15	02/01/2011	02/17/2011	NO ISSUES TO REPORT.
2226320		Facility	FAR ANNUAL FACILITY ASSES	OG42	03/01/2011	02/18/2011	Avitivity no longer required as per Compliance Group Feb 2011 PG
2231920	0000142206	ALARM DIALER	PERFORM WEEKLY CHECKLIST	Weekly	02/01/2011	02/23/2011	FLOWS NORMAL, ALL GOOD
2231921	0000114653	OUTPOST 5 PANEL BRUCE MINE SPS	PERFORM WEEKLY CHECKLIST	Weekly	02/01/2011	02/23/2011	FLOWS NORMAL, ALL GOOD
2231919	0000127640	METER LEVEL 01 MAIN PS	PERFORM WEEKLY CHECKLIST	Weekly	02/01/2011	02/23/2011	FLOWS NORMAL, ALL GOOD
2231924	0000142960	MAIN MCC PANEL	PERFORM WEEKLY CHECKLIST	Weekly	02/01/2011	02/23/2011	FLOWS NORMAL, ALL GOOD
2231923	0000142961	TANK DIESEL MAIN PS	PERFORM WEEKLY CHECKLIST	Weekly	02/01/2011	02/23/2011	FLOWS NORMAL, ALL GOOD
2231914	0000127620	PANEL TRANSFER 01 GENSET	PERFORM WEEKLY CHECKLIST	Weekly	02/01/2011	02/23/2011	FLOWS NORMAL, ALL GOOD
2231922	0000142715	EYEWASH EMERGENCY	PERFORM WEEKLY CHECKLIST	Weekly	02/01/2011	02/23/2011	FLOWS NORMAL, ALL GOOD

### Facility Work Order Summary

WO #	Equipment #	Equipment Description	Activity Description	Maint. Freq	Scheduled Date	Completion Date	Comments
2231918	0000127639	PUMP SUBM #2	PERFORM WEEKLY CHECKLIST	Weekly	02/01/2011	02/23/2011	FLOWS NORMAL, ALL GOOD
2231917	0000127638	PUMP SUBM #1	PERFORM WEEKLY CHECKLIST	Weekly	02/01/2011	02/23/2011	FLOWS NORMAL, ALL GOOD
2231916	0000127636	PANEL CONTROL GENERATOR	PERFORM WEEKLY CHECKLIST	Weekly	02/01/2011	02/23/2011	FLOWS NORMAL, ALL GOOD
2231915	0000127635	ENGINE DIESEL MAIN PS	PERFORM WEEKLY CHECKLIST	Weekly	02/01/2011	02/23/2011	FLOWS NORMAL, ALL GOOD
2232038	0000127622	PUMP SUBM 01	PERFORM WEEKLY CHECKLIST	Weekly	02/01/2011	02/23/2011	ALL GOOD AT THIS LIFT STATION.
2232040	0000142963	METER LEVEL PROUT ST.	PERFORM WEEKLY CHECKLIST	Weekly	02/01/2011	02/23/2011	ALL GOOD AT THIS LIFT STATION.
2232039	0000127623	PUMP SUBM 02	PERFORM WEEKLY CHECKLIST	Weekly	02/01/2011	02/23/2011	ALL GOOD AT THIS LIFT STATION.
2232076	0000127618	PUMP SUBM 01	PERFORM WEEKLY CHECKLIST	Weekly	02/01/2011	02/23/2011	PUMPS RUNNING NORMAL.
2232075	0000127617	METER LEVEL TAYOR ST.	PERFORM WEEKLY CHECKLIST	Weekly	02/01/2011	02/23/2011	PUMPS RUNNING NORMAL.
2232078	0000142962	TAYLOR STREET MCC PANEL	PERFORM WEEKLY CHECKLIST	Weekly	02/01/2011	02/23/2011	PUMPS RUNNING NORMAL.
2232077	0000127619	PUMP SUBM #2	PERFORM WEEKLY CHECKLIST	Weekly	02/01/2011	02/23/2011	PUMPS RUNNING NORMAL.
2226277	0000127635	ENGINE DIESEL MAIN PS	ENGINE DIESEL	Monthly	02/01/2011	02/23/2011	TESTED ONE HOUR UNDER LOAD. ALL OK.
2226291	0000142206	ALARM DIALER	ALARM DIALER	Monthly	02/01/2011	02/23/2011	CHECKED FLOAT ALARM ALL OK
2226278	0000127635	ENGINE DIESEL MAIN PS	ENGINE DIESEL	Monthly	03/01/2011	03/07/2011	TESTED GENERATOR WHILE GREAT LAKES POWER REPLACED METERS.
2226292	0000142206	ALARM DIALER	ALARM DIALER	Monthly	03/01/2011	03/15/2011	CHECKED HIGH LEVEL FLOAT ALARM
2226306		Facility	OHSA WORKPLACE SAFETY INS	OG15	03/01/2011	03/22/2011	NO OUTSTANDING ISSUES.
2232042	0000127623	PUMP SUBM 02	PERFORM WEEKLY CHECKLIST	Weekly	03/01/2011	03/25/2011	ALL NORMAL WITH PUMPS AND SEWAGE FLOWS.
2231931	0000142206	ALARM DIALER	PERFORM WEEKLY CHECKLIST	Weekly	03/01/2011	03/25/2011	GREAT LAKES POWER INTO CHANGE METERS, RAN GENERATOR FOR DURATION. ALL PUMPS RUNNING NORMAL.
2231930	0000127640	METER LEVEL 01 MAIN PS	PERFORM WEEKLY CHECKLIST	Weekly	03/01/2011	03/25/2011	GREAT LAKES POWER INTO CHANGE METERS, RAN GENERATOR FOR DURATION. ALL PUMPS RUNNING NORMAL.

### Facility Work Order Summary

WO #	Equipment #	Equipment Description	Activity Description	Maint. Freq	Scheduled Date	Completion Date	Comments
2231932	0000114653	OUTPOST 5 PANEL BRUCE MINE SPS	PERFORM WEEKLY CHECKLIST	Weekly	03/01/2011	03/25/2011	GREAT LAKES POWER INTO CHANGE METERS, RAN GENERATOR FOR DURATION. ALL PUMPS RUNNING NORMAL.
2231935	0000142960	MAIN MCC PANEL	PERFORM WEEKLY CHECKLIST	Weekly	03/01/2011	03/25/2011	GREAT LAKES POWER INTO CHANGE METERS, RAN GENERATOR FOR DURATION. ALL PUMPS RUNNING NORMAL.
2232043	0000142963	METER LEVEL PROUT ST.	PERFORM WEEKLY CHECKLIST	Weekly	03/01/2011	03/25/2011	ALL NORMAL WITH PUMPS AND SEWAGE FLOWS.
2231934	0000142961	TANK DIESEL MAIN PS	PERFORM WEEKLY CHECKLIST	Weekly	03/01/2011	03/25/2011	GREAT LAKES POWER INTO CHANGE METERS, RAN GENERATOR FOR DURATION. ALL PUMPS RUNNING NORMAL.
2231925	0000127620	PANEL TRANSFER 01 GENSET	PERFORM WEEKLY CHECKLIST	Weekly	03/01/2011	03/25/2011	GREAT LAKES POWER INTO CHANGE METERS, RAN GENERATOR FOR DURATION. ALL PUMPS RUNNING NORMAL.
2232041	0000127622	PUMP SUBM 01	PERFORM WEEKLY CHECKLIST	Weekly	03/01/2011	03/25/2011	ALL NORMAL WITH PUMPS AND SEWAGE FLOWS.
2231933	0000142715	EYEWASH EMERGENCY	PERFORM WEEKLY CHECKLIST	Weekly	03/01/2011	03/25/2011	GREAT LAKES POWER INTO CHANGE METERS, RAN GENERATOR FOR DURATION. ALL PUMPS RUNNING NORMAL.
2231926	0000127635	ENGINE DIESEL MAIN PS	PERFORM WEEKLY CHECKLIST	Weekly	03/01/2011	03/25/2011	GREAT LAKES POWER INTO CHANGE METERS, RAN GENERATOR FOR DURATION. ALL PUMPS RUNNING NORMAL.
2231927	0000127636	PANEL CONTROL GENERATOR	PERFORM WEEKLY CHECKLIST	Weekly	03/01/2011	03/25/2011	GREAT LAKES POWER INTO CHANGE METERS, RAN GENERATOR FOR DURATION. ALL PUMPS RUNNING NORMAL.
2231928	0000127638	PUMP SUBM #1	PERFORM WEEKLY CHECKLIST	Weekly	03/01/2011	03/25/2011	GREAT LAKES POWER INTO CHANGE METERS, RAN GENERATOR FOR DURATION. ALL PUMPS RUNNING NORMAL.
2231929	0000127639	PUMP SUBM #2	PERFORM WEEKLY CHECKLIST	Weekly	03/01/2011	03/25/2011	GREAT LAKES POWER INTO CHANGE METERS, RAN GENERATOR FOR DURATION. ALL PUMPS RUNNING NORMAL.
2232081	0000127619	PUMP SUBM #2	PERFORM WEEKLY CHECKLIST	Weekly	03/01/2011	03/25/2011	PUMPS NEVER HAD TO BE RESET ON OVERLOAD. ALL OK ALARM FLOAT CHECKED AND OK





### Facility Work Order Summary

WO #	Equipment #	Equipment Description	Activity Description	Maint. Freq	Scheduled Date	Completion Date	Comments
2226293	0000142206	ALARM DIALER	ALARM DIALER	Monthly	04/01/2011	04/14/2011	SOME REPAIRS MADE TO ATS PANEL AND BELL LINE. WORKING NORMAL.
2226271	0000127620	PANEL TRANSFER 01 GENSET	PANEL TRANSFER	Tri-annually	11/30/2011	04/19/2011	
2226274	0000127631	GENERATOR ELECTRIC	GENERATOR ELECTRIC	Tri-annually	11/30/2011	04/19/2011	
2226275	0000127635	ENGINE DIESEL MAIN PS	ENGINE DIESEL	Annually	11/30/2011	04/19/2011	
2232045	0000127623	PUMP SUBM 02	PERFORM WEEKLY CHECKLIST	Weekly	04/01/2011	04/27/2011	REPAIRED # 1 PUMP AS RAGS CAUGHT ELECTRIC WIRE AND PULLED IT INTO PUMP IMPELLER. RED STAR COMPLETED REPAIRS. PUMP PUT BACK INTO OPERATION
2232046	0000142963	METER LEVEL PROUT ST.	PERFORM WEEKLY CHECKLIST	Weekly	04/01/2011	04/27/2011	REPAIRED # 1 PUMP AS RAGS CAUGHT ELECTRIC WIRE AND PULLED IT INTO PUMP IMPELLER. RED STAR COMPLETED REPAIRS. PUMP PUT BACK INTO OPERATION
2232044	0000127622	PUMP SUBM 01	PERFORM WEEKLY CHECKLIST	Weekly	04/01/2011	04/27/2011	REPAIRED # 1 PUMP AS RAGS CAUGHT ELECTRIC WIRE AND PULLED IT INTO PUMP IMPELLER. RED STAR COMPLETED REPAIRS. PUMP PUT BACK INTO OPERATION
2232085	0000127619	PUMP SUBM #2	PERFORM WEEKLY CHECKLIST	Weekly	04/01/2011	04/27/2011	REPLACED DEFECTIVE CONTACT AND OVERLOAD BREAKER AND BELL HAD TO REPAIR LINE AS REQUIRED ATS ALARM SYSTEM TO CHECK SYSTEM.
2232084	0000127618	PUMP SUBM 01	PERFORM WEEKLY CHECKLIST	Weekly	04/01/2011	04/27/2011	REPLACED DEFECTIVE CONTACT AND OVERLOAD BREAKER AND BELL HAD TO REPAIR LINE AS REQUIRED ATS ALARM SYSTEM TO CHECK SYSTEM.
2232083	0000127617	METER LEVEL TAYOR ST.	PERFORM WEEKLY CHECKLIST	Weekly	04/01/2011	04/27/2011	REPLACED DEFECTIVE CONTACT AND OVERLOAD BREAKER AND BELL HAD TO REPAIR LINE AS REQUIRED ATS ALARM SYSTEM TO CHECK SYSTEM.
2232086	0000142962	TAYLOR STREET MCC PANEL	PERFORM WEEKLY CHECKLIST	Weekly	04/01/2011	04/27/2011	REPLACED DEFECTIVE CONTACT AND OVERLOAD BREAKER AND BELL HAD TO REPAIR LINE AS REQUIRED ATS ALARM SYSTEM TO CHECK SYSTEM.
2226279	0000127635	ENGINE DIESEL MAIN PS	ENGINE DIESEL	Monthly	04/01/2011	04/28/2011	COMPLETED LOAD TEST ON GENERATOR DURING HIGH FLOWS, ALL OK
2226307		Facility	OHS WORKPLACE SAFETY INS	OG15	04/01/2011	04/28/2011	NO SAFETY ISSUES AT PROUT STREET LIFT STATION
2343559		Facility	CALL OUT (EMERGENCY,ALARM	OG44	05/01/2011	05/02/2011	EMERGENCY DISCHARGE OF LAGOON AS LEVELS WERE AT MAXIMUM AND TIME TO DISCHARGE WAS TODAY ACCORDING TO C OF A

### Facility Work Order Summary

WO #	Equipment #	Equipment Description	Activity Description	Maint. Freq	Scheduled Date	Completion Date	Comments
2226302	0000142715	EYEWASH EMERGENCY			05/18/2011	05/05/2011	replenish water and saline solution in emergency eyewash, completed and checked unit for operation. all good
2226280	0000127635	ENGINE DIESEL MAIN PS	ENGINE DIESEL	Monthly	05/02/2011	05/12/2011	POWER OUTAGE FOR 6 HOURS. CHECKED GENERATOR, AND PUMP SYSTEMS. UNIT TRANSFERRED POWER NORMALLY, ADDED OIL TO ENGINE TO TOP IT UP.
2346556		Facility	CALL OUT (EMERGENCY,ALARM	OG44	05/15/2011	05/15/2011	LAGOON MAINTENANCE. COMPLETED DISCHARGE. SAMPLED EFFLUENT FOR BOTH CELLS. STOPPED DISCHARGE, SET BOTH INFLUENT FLOWS INTO BOTH CELLS FOR SUMMER.
2232090	0000142962	TAYLOR STREET MCC PANEL	PERFORM WEEKLY CHECKLIST	Weekly	05/02/2011	05/27/2011	ESA COMPLETED INSPECTION ON REPAIRS ALL GOOD
2232087	0000127617	METER LEVEL TAYOR ST.	PERFORM WEEKLY CHECKLIST	Weekly	05/02/2011	05/27/2011	ESA COMPLETED INSPECTION ON REPAIRS ALL GOOD
2232088	0000127618	PUMP SUBM 01	PERFORM WEEKLY CHECKLIST	Weekly	05/02/2011	05/27/2011	ESA COMPLETED INSPECTION ON REPAIRS ALL GOOD
2232089	0000127619	PUMP SUBM #2	PERFORM WEEKLY CHECKLIST	Weekly	05/02/2011	05/27/2011	ESA COMPLETED INSPECTION ON REPAIRS ALL GOOD
2231936	0000127620	PANEL TRANSFER 01 GENSET	PERFORM WEEKLY CHECKLIST	Weekly	04/01/2011	05/27/2011	aLL GOOD
2231944	0000142715	EYEWASH EMERGENCY	PERFORM WEEKLY CHECKLIST	Weekly	04/01/2011	05/27/2011	aLL GOOD
2231940	0000127639	PUMP SUBM #2	PERFORM WEEKLY CHECKLIST	Weekly	04/01/2011	05/27/2011	aLL GOOD
2231939	0000127638	PUMP SUBM #1	PERFORM WEEKLY CHECKLIST	Weekly	04/01/2011	05/27/2011	aLL GOOD
2231938	0000127636	PANEL CONTROL GENERATOR	PERFORM WEEKLY CHECKLIST	Weekly	04/01/2011	05/27/2011	aLL GOOD
2231937	0000127635	ENGINE DIESEL MAIN PS	PERFORM WEEKLY CHECKLIST	Weekly	04/01/2011	05/27/2011	aLL GOOD
2231945	0000142961	TANK DIESEL MAIN PS	PERFORM WEEKLY CHECKLIST	Weekly	04/01/2011	05/27/2011	aLL GOOD
2231946	0000142960	MAIN MCC PANEL	PERFORM WEEKLY CHECKLIST	Weekly	04/01/2011	05/27/2011	aLL GOOD
2231942	0000142206	ALARM DIALER	PERFORM WEEKLY CHECKLIST	Weekly	04/01/2011	05/27/2011	aLL GOOD
2231943	0000114653	OUTPOST 5 PANEL BRUCE MINE SPS	PERFORM WEEKLY CHECKLIST	Weekly	04/01/2011	05/27/2011	aLL GOOD
2231941	0000127640	METER LEVEL 01 MAIN PS	PERFORM WEEKLY CHECKLIST	Weekly	04/01/2011	05/27/2011	aLL GOOD

### Facility Work Order Summary

WO #	Equipment #	Equipment Description	Activity Description	Maint. Freq	Scheduled Date	Completion Date	Comments
2231952	0000127640	METER LEVEL 01 MAIN PS	PERFORM WEEKLY CHECKLIST	Weekly	05/02/2011	05/27/2011	LAGOON DISCHARGE COMPLETED
2231954	0000114653	OUTPOST 5 PANEL BRUCE MINE SPS	PERFORM WEEKLY CHECKLIST	Weekly	05/02/2011	05/27/2011	LAGOON DISCHARGE COMPLETED
2231953	0000142206	ALARM DIALER	PERFORM WEEKLY CHECKLIST	Weekly	05/02/2011	05/27/2011	LAGOON DISCHARGE COMPLETED
2231957	0000142960	MAIN MCC PANEL	PERFORM WEEKLY CHECKLIST	Weekly	05/02/2011	05/27/2011	LAGOON DISCHARGE COMPLETED
2231956	0000142961	TANK DIESEL MAIN PS	PERFORM WEEKLY CHECKLIST	Weekly	05/02/2011	05/27/2011	LAGOON DISCHARGE COMPLETED
2231948	0000127635	ENGINE DIESEL MAIN PS	PERFORM WEEKLY CHECKLIST	Weekly	05/02/2011	05/27/2011	LAGOON DISCHARGE COMPLETED
2231949	0000127636	PANEL CONTROL GENERATOR	PERFORM WEEKLY CHECKLIST	Weekly	05/02/2011	05/27/2011	LAGOON DISCHARGE COMPLETED
2231950	0000127638	PUMP SUBM #1	PERFORM WEEKLY CHECKLIST	Weekly	05/02/2011	05/27/2011	LAGOON DISCHARGE COMPLETED
2231951	0000127639	PUMP SUBM #2	PERFORM WEEKLY CHECKLIST	Weekly	05/02/2011	05/27/2011	LAGOON DISCHARGE COMPLETED
2231955	0000142715	EYEWASH EMERGENCY	PERFORM WEEKLY CHECKLIST	Weekly	05/02/2011	05/27/2011	LAGOON DISCHARGE COMPLETED
2231947	0000127620	PANEL TRANSFER 01 GENSET	PERFORM WEEKLY CHECKLIST	Weekly	05/02/2011	05/27/2011	LAGOON DISCHARGE COMPLETED
2232047	0000127622	PUMP SUBM 01	PERFORM WEEKLY CHECKLIST	Weekly	05/02/2011	05/27/2011	PUMP STATION RUNNING NORMAL
2232049	0000142963	METER LEVEL PROUT ST.	PERFORM WEEKLY CHECKLIST	Weekly	05/02/2011	05/27/2011	PUMP STATION RUNNING NORMAL
2232048	0000127623	PUMP SUBM 02	PERFORM WEEKLY CHECKLIST	Weekly	05/02/2011	05/27/2011	PUMP STATION RUNNING NORMAL
2226294	0000142206	ALARM DIALER	ALARM DIALER	Monthly	05/02/2011	05/27/2011	CHECKED ALARM SYSTEM.
2319364		Facility	TEST CRITICAL ALARMS		05/02/2011	05/27/2011	Test all high and low level critical alarms at each pump station and document that each was complete with a call from the alarm company.
2226308		Facility	OHSA WORKPLACE SAFETY INS	OG15	05/02/2011	05/30/2011	Completed and documented H&S inspection. Closed off all items found.
2226281	0000127635	ENGINE DIESEL MAIN PS	ENGINE DIESEL	Monthly	06/01/2011	06/01/2011	GENERATOR RAN UNDER LOAD CONDITIONS ALL WORKED NORMAL. OIL LEVEL CHECKED IN ENGINE AND OK.
2362515		Facility	CORRECTIVE MEASURE HTLH &	Semi-annually		06/07/2011	TAPED SHARP EDGES OF OUTPOST ANTENNA, CLEANED UP SITE

### Facility Work Order Summary

WO #	Equipment #	Equipment Description	Activity Description	Maint. Freq	Scheduled Date	Completion Date	Comments
2319351	0000127637	FAN EXHAUST - MAIN PS	FAN EXHAUST - MAIN PS	Annually	06/28/2011	06/08/2011	ALL FANS WORKING NORMAL IN MCC ROOM. HEATER NOT WORKING IN UTILITY ROOM.
2226272	0000127622	PUMP SUBM 01	PUMP SUBM	Annually	06/01/2011	06/08/2011	PUMP PULLED AND INSPECTED AND WIRE LEAD REPAIRED BY REDSTAR.
2226273	0000127623	PUMP SUBM 02	PUMP SUBM	Annually	06/01/2011	06/08/2011	PUMP RUNNING NORMAL.
2226288	0000127638	PUMP SUBM #1	PUMP SUBM	Annually	06/01/2011	06/08/2011	PUMP HAS NO NOISE OR VIBRATION. AMPERAGE DRAW WITHIN SPECS.
2226289	0000127639	PUMP SUBM #2	PUMP SUBM	Annually	06/01/2011	06/08/2011	PUMP RUNNING NORMAL. REPLACED CONTACTOR IN MCC PANEL. NORMAL AMPERAGE DRAW FROM MOTOR
2226309		Facility	OHSA WORKPLACE SAFETY INS	OG15	06/01/2011	06/08/2011	NO ISSUES SIGHTED.
2362865		Facility	CORRECTIVE MAINTENANCE	OG03	06/09/2011	06/10/2011	Cenlo Enterprises was into spray the Lagoon for Vegetation Control. This is the third year of application and growth is still abundant. Kill rates will be monitored to ensure satisfaction and contractor will spray again if kill is not attained.
2362868		Facility	CORRECTIVE MAINTENANCE	OG03	06/11/2011	06/11/2011	Cenlo Enterprises was into spray the Lagoon for Cattail Control. This is the initial application and growth will be monitored to ensure satisfaction and contractor will spray again if kill is not attained.
2226270	0000127619	PUMP SUBM #2	PUMP SUBM	Annually	06/01/2011	06/14/2011	NO EXCESSIVE NOISE OR VIBRATION.
2231965	0000114653	OUTPOST 5 PANEL BRUCE MINE SPS	PERFORM WEEKLY CHECKLIST	Weekly	06/01/2011	06/27/2011	PAINTING LIFT STATION OUTSIDE TANK.
2231963	0000127640	METER LEVEL 01 MAIN PS	PERFORM WEEKLY CHECKLIST	Weekly	06/01/2011	06/27/2011	PAINTING LIFT STATION OUTSIDE TANK.
2231968	0000142960	MAIN MCC PANEL	PERFORM WEEKLY CHECKLIST	Weekly	06/01/2011	06/27/2011	PAINTING LIFT STATION OUTSIDE TANK.
2231964	0000142206	ALARM DIALER	PERFORM WEEKLY CHECKLIST	Weekly	06/01/2011	06/27/2011	PAINTING LIFT STATION OUTSIDE TANK.
2231967	0000142961	TANK DIESEL MAIN PS	PERFORM WEEKLY CHECKLIST	Weekly	06/01/2011	06/27/2011	PAINTING LIFT STATION OUTSIDE TANK.
2231966	0000142715	EYEWASH EMERGENCY	PERFORM WEEKLY CHECKLIST	Weekly	06/01/2011	06/27/2011	PAINTING LIFT STATION OUTSIDE TANK.
2231958	0000127620	PANEL TRANSFER 01 GENSET	PERFORM WEEKLY CHECKLIST	Weekly	06/01/2011	06/27/2011	PAINTING LIFT STATION OUTSIDE TANK.
2231962	0000127639	PUMP SUBM #2	PERFORM WEEKLY CHECKLIST	Weekly	06/01/2011	06/27/2011	PAINTING LIFT STATION OUTSIDE TANK.
2231961	0000127638	PUMP SUBM #1	PERFORM WEEKLY CHECKLIST	Weekly	06/01/2011	06/27/2011	PAINTING LIFT STATION OUTSIDE TANK.

### Facility Work Order Summary

WO #	Equipment #	Equipment Description	Activity Description	Maint. Freq	Scheduled Date	Completion Date	Comments
2231960	0000127636	PANEL CONTROL GENERATOR	PERFORM WEEKLY CHECKLIST	Weekly	06/01/2011	06/27/2011	PAINTING LIFT STATION OUTSIDE TANK.
2231959	0000127635	ENGINE DIESEL MAIN PS	PERFORM WEEKLY CHECKLIST	Weekly	06/01/2011	06/27/2011	PAINTING LIFT STATION OUTSIDE TANK.
2232050	0000127622	PUMP SUBM 01	PERFORM WEEKLY CHECKLIST	Weekly	06/01/2011	06/27/2011	PAINTING OUTSIDE HOLDING TANK. AND OTHER APPURTENANCES.
2232052	0000142963	METER LEVEL PROUT ST.	PERFORM WEEKLY CHECKLIST	Weekly	06/01/2011	06/27/2011	PAINTING OUTSIDE HOLDING TANK. AND OTHER APPURTENANCES.
2232051	0000127623	PUMP SUBM 02	PERFORM WEEKLY CHECKLIST	Weekly	06/01/2011	06/27/2011	PAINTING OUTSIDE HOLDING TANK. AND OTHER APPURTENANCES.
2232092	0000127618	PUMP SUBM 01	PERFORM WEEKLY CHECKLIST	Weekly	06/01/2011	06/27/2011	ALL GOOD AT THIS PUMP STATION.
2232091	0000127617	METER LEVEL TAYOR ST.	PERFORM WEEKLY CHECKLIST	Weekly	06/01/2011	06/27/2011	ALL GOOD AT THIS PUMP STATION.
2232094	0000142962	TAYLOR STREET MCC PANEL	PERFORM WEEKLY CHECKLIST	Weekly	06/01/2011	06/27/2011	ALL GOOD AT THIS PUMP STATION.
2232093	0000127619	PUMP SUBM #2	PERFORM WEEKLY CHECKLIST	Weekly	06/01/2011	06/27/2011	ALL GOOD AT THIS PUMP STATION.
2385882		Facility	CORRECTIVE MAINTENANCE	OG03	06/11/2011	06/27/2011	Genlo Enterprises was into spray the Marina for Vegetation Control. This is the initial application and growth will be monitored to ensure satisfaction and contractor will spray again if kill is not attained.
2226269	0000127618	PUMP SUBM 01	PUMP SUBM	Annually	06/01/2011	06/28/2011	PUMPING NORMAL, NO EXCESSIVE NOISE OR VIBRATION
2226295	0000142206	ALARM DIALER	ALARM DIALER	Monthly	06/01/2011	06/29/2011	PHONE LINE GOOD ALARM SYSTEM READY AND ARMED.
2319365		Facility	TEST CRITICAL ALARMS		06/01/2011	06/29/2011	Test all high and low level critical alarms at each pump station and document that each was complete with a call from the alarm company.
2226282	0000127635	ENGINE DIESEL MAIN PS	ENGINE DIESEL	Monthly	07/01/2011	07/10/2011	power out around area. checked generator and all is ok. power transferred normally
2226296	0000142206	ALARM DIALER	ALARM DIALER	Monthly	07/01/2011	07/15/2011	Checked high level float alarms. All ok
2319366		Facility	TEST CRITICAL ALARMS		07/01/2011	07/21/2011	Tested all high and low level critical alarms at each pump station and documented that each was complete with a call from the alarm company.
2232055	0000142963	METER LEVEL PROUT ST.	PERFORM WEEKLY CHECKLIST	Weekly	07/01/2011	07/25/2011	BEAMS AND TANK TO BE PAINTED BROWN.
2232053	0000127622	PUMP SUBM 01	PERFORM WEEKLY CHECKLIST	Weekly	07/01/2011	07/25/2011	BEAMS AND TANK TO BE PAINTED BROWN.

### Facility Work Order Summary

WO #	Equipment #	Equipment Description	Activity Description	Maint. Freq	Scheduled Date	Completion Date	Comments
2232054	0000127623	PUMP SUBM 02	PERFORM WEEKLY CHECKLIST	Weekly	07/01/2011	07/25/2011	BEAMS AND TANK TO BE PAINTED BROWN.
2232098	0000142962	TAYLOR STREET MCC PANEL	PERFORM WEEKLY CHECKLIST	Weekly	07/01/2011	07/25/2011	ALL OK AT THIS STATION
2232096	0000127618	PUMP SUBM 01	PERFORM WEEKLY CHECKLIST	Weekly	07/01/2011	07/25/2011	ALL OK AT THIS STATION
2232097	0000127619	PUMP SUBM #2	PERFORM WEEKLY CHECKLIST	Weekly	07/01/2011	07/25/2011	ALL OK AT THIS STATION
2232095	0000127617	METER LEVEL TAYOR ST.	PERFORM WEEKLY CHECKLIST	Weekly	07/01/2011	07/25/2011	ALL OK AT THIS STATION
2231978	0000142961	TANK DIESEL MAIN PS	PERFORM WEEKLY CHECKLIST	Weekly	07/01/2011	07/25/2011	FLOWS HIGHER DUE TO HIG RUNOFF. BEAMS AND TANKS PAINTED OUTSIDE.
2231975	0000142206	ALARM DIALER	PERFORM WEEKLY CHECKLIST	Weekly	07/01/2011	07/25/2011	FLOWS HIGHER DUE TO HIG RUNOFF. BEAMS AND TANKS PAINTED OUTSIDE.
2231979	0000142960	MAIN MCC PANEL	PERFORM WEEKLY CHECKLIST	Weekly	07/01/2011	07/25/2011	FLOWS HIGHER DUE TO HIG RUNOFF. BEAMS AND TANKS PAINTED OUTSIDE.
2231977	0000142715	EYEWASH EMERGENCY	PERFORM WEEKLY CHECKLIST	Weekly	07/01/2011	07/25/2011	FLOWS HIGHER DUE TO HIG RUNOFF. BEAMS AND TANKS PAINTED OUTSIDE.
2231969	0000127620	PANEL TRANSFER 01 GENSET	PERFORM WEEKLY CHECKLIST	Weekly	07/01/2011	07/25/2011	FLOWS HIGHER DUE TO HIG RUNOFF. BEAMS AND TANKS PAINTED OUTSIDE.
2231970	0000127635	ENGINE DIESEL MAIN PS	PERFORM WEEKLY CHECKLIST	Weekly	07/01/2011	07/25/2011	FLOWS HIGHER DUE TO HIG RUNOFF. BEAMS AND TANKS PAINTED OUTSIDE.
2231971	0000127636	PANEL CONTROL GENERATOR	PERFORM WEEKLY CHECKLIST	Weekly	07/01/2011	07/25/2011	FLOWS HIGHER DUE TO HIG RUNOFF. BEAMS AND TANKS PAINTED OUTSIDE.
2231972	0000127638	PUMP SUBM #1	PERFORM WEEKLY CHECKLIST	Weekly	07/01/2011	07/25/2011	FLOWS HIGHER DUE TO HIG RUNOFF. BEAMS AND TANKS PAINTED OUTSIDE.
2231973	0000127639	PUMP SUBM #2	PERFORM WEEKLY CHECKLIST	Weekly	07/01/2011	07/25/2011	FLOWS HIGHER DUE TO HIG RUNOFF. BEAMS AND TANKS PAINTED OUTSIDE.
2231974	0000127640	METER LEVEL 01 MAIN PS	PERFORM WEEKLY CHECKLIST	Weekly	07/01/2011	07/25/2011	FLOWS HIGHER DUE TO HIG RUNOFF. BEAMS AND TANKS PAINTED OUTSIDE.
2231976	0000114653	OUTPOST 5 PANEL BRUCE MINE SPS	PERFORM WEEKLY CHECKLIST	Weekly	07/01/2011	07/25/2011	FLOWS HIGHER DUE TO HIG RUNOFF. BEAMS AND TANKS PAINTED OUTSIDE.
2226319	Facility	Facility	FEP CONTACT LIST		07/01/2011	07/28/2011	Up to date phone list no changes required.
2226310	Facility	Facility	OHSA WORKPLACE SAFETY INS	OG15	07/01/2011	07/28/2011	Checked area at Frances st. lift station. Noted old metal object on ground neat MCC panel. notified Tom phillips to remove tripping hazard.
2226283	0000127635	ENGINE DIESEL MAIN PS	ENGINE DIESEL	Monthly	08/01/2011	08/04/2011	Checked generator while power out. Power transferred normally. Tightened fan belt after due to noticed loosening.

### Facility Work Order Summary

WO #	Equipment #	Equipment Description	Activity Description	Maint. Freq	Scheduled Date	Completion Date	Comments
2232102	0000142962	TAYLOR STREET MCC PANEL	PERFORM WEEKLY CHECKLIST	Weekly	08/01/2011	08/23/2011	Check programming of pump station and reprogrammed to have pumps alternate between use. Pump hours on PDC indicate that pumps are running alternately.
2232099	0000127617	METER LEVEL TAYOR ST.	PERFORM WEEKLY CHECKLIST	Weekly	08/01/2011	08/23/2011	Check programming of pump station and reprogrammed to have pumps alternate between use. Pump hours on PDC indicate that pumps are running alternately.
2232101	0000127619	PUMP SUBM #2	PERFORM WEEKLY CHECKLIST	Weekly	08/01/2011	08/23/2011	Check programming of pump station and reprogrammed to have pumps alternate between use. Pump hours on PDC indicate that pumps are running alternately.
2232100	0000127618	PUMP SUBM 01	PERFORM WEEKLY CHECKLIST	Weekly	08/01/2011	08/23/2011	Check programming of pump station and reprogrammed to have pumps alternate between use. Pump hours on PDC indicate that pumps are running alternately.
2231989	0000142961	TANK DIESEL MAIN PS	PERFORM WEEKLY CHECKLIST	Weekly	08/01/2011	08/23/2011	All pumps working normal. Tightened fan belts on generator. Checked during prolonged power failure.
2231986	0000142206	ALARM DIALER	PERFORM WEEKLY CHECKLIST	Weekly	08/01/2011	08/23/2011	All pumps working normal. Tightened fan belts on generator. Checked during prolonged power failure.
2231990	0000142960	MAIN MCC PANEL	PERFORM WEEKLY CHECKLIST	Weekly	08/01/2011	08/23/2011	All pumps working normal. Tightened fan belts on generator. Checked during prolonged power failure.
2231984	0000127639	PUMP SUBM #2	PERFORM WEEKLY CHECKLIST	Weekly	08/01/2011	08/23/2011	All pumps working normal. Tightened fan belts on generator. Checked during prolonged power failure.
2231983	0000127638	PUMP SUBM #1	PERFORM WEEKLY CHECKLIST	Weekly	08/01/2011	08/23/2011	All pumps working normal. Tightened fan belts on generator. Checked during prolonged power failure.
2231982	0000127636	PANEL CONTROL GENERATOR	PERFORM WEEKLY CHECKLIST	Weekly	08/01/2011	08/23/2011	All pumps working normal. Tightened fan belts on generator. Checked during prolonged power failure.
2231981	0000127635	ENGINE DIESEL MAIN PS	PERFORM WEEKLY CHECKLIST	Weekly	08/01/2011	08/23/2011	All pumps working normal. Tightened fan belts on generator. Checked during prolonged power failure.
2231980	0000127620	PANEL TRANSFER 01 GENSET	PERFORM WEEKLY CHECKLIST	Weekly	08/01/2011	08/23/2011	All pumps working normal. Tightened fan belts on generator. Checked during prolonged power failure.
2231988	0000142715	EYEWASH EMERGENCY	PERFORM WEEKLY CHECKLIST	Weekly	08/01/2011	08/23/2011	All pumps working normal. Tightened fan belts on generator. Checked during prolonged power failure.



### Facility Work Order Summary

WO #	Equipment #	Equipment Description	Activity Description	Maint. Freq	Scheduled Date	Completion Date	Comments
2231987	0000114653	OUTPOST 5 PANEL BRUCE MINE SPS	PERFORM WEEKLY CHECKLIST	Weekly	08/01/2011	08/23/2011	All pumps working normal. Tightened fan belts on generator. Checked during prolonged power failure.
2231985	0000127640	METER LEVEL 01 MAIN PS	PERFORM WEEKLY CHECKLIST	Weekly	08/01/2011	08/23/2011	All pumps working normal. Tightened fan belts on generator. Checked during prolonged power failure.
2232057	0000127623	PUMP SUBM 02	PERFORM WEEKLY CHECKLIST	Weekly	08/01/2011	08/23/2011	checked station and pumps running normal.
2232056	0000127622	PUMP SUBM 01	PERFORM WEEKLY CHECKLIST	Weekly	08/01/2011	08/23/2011	checked station and pumps running normal.
2232058	0000142963	METER LEVEL PROUT ST.	PERFORM WEEKLY CHECKLIST	Weekly	08/01/2011	08/23/2011	checked station and pumps running normal.
2226297	0000142206	ALARM DIALER	ALARM DIALER	Monthly	08/01/2011	08/24/2011	Checked alarm dialer all working normal
2319367		Facility	TEST CRITICAL ALARMS		08/01/2011	08/24/2011	Test all High level critical alarms at each pump station and document that each was complete with a call from the alarm company. Require Name changes to Main lift station.
2226311		Facility	OHS WORKPLACE SAFETY INS	OG15	08/01/2011	08/25/2011	Tripping Hazard removed from Taylor street lift station. No other issues.
2425891		Facility	OHS WORKPLACE SAFETY INS	OG15		08/29/2011	HEALTH AND SAFETY INSPECTION - NO ISSUES
2393448		Facility	CAPITAL PROJECT	OG02	07/20/2011	09/05/2011	Lightning strike at Bruce Mines Taylor PS. Milltronics required replacing as well as breaker switch. Khari on site for a period of time to assist with keeping sewage levels down.
2226284	0000127635	ENGINE DIESEL MAIN PS	ENGINE DIESEL	Monthly	09/01/2011	09/21/2011	CHECKED UNDER LOAD CONDITIONS ALL NORMAL. NEW BATTERIES
2231996	0000127640	METER LEVEL 01 MAIN PS	PERFORM WEEKLY CHECKLIST	Weekly	09/01/2011	09/21/2011	Flows very low due to low rainfall. All ok at lagoon.
2231998	0000114653	OUTPOST 5 PANEL BRUCE MINE SPS	PERFORM WEEKLY CHECKLIST	Weekly	09/01/2011	09/21/2011	Flows very low due to low rainfall. All ok at lagoon.
2232001	0000142960	MAIN MCC PANEL	PERFORM WEEKLY CHECKLIST	Weekly	09/01/2011	09/21/2011	Flows very low due to low rainfall. All ok at lagoon.
2232061	0000142963	METER LEVEL PROUT ST.	PERFORM WEEKLY CHECKLIST	Weekly	09/01/2011	09/21/2011	All ok this station.
2231997	0000142206	ALARM DIALER	PERFORM WEEKLY CHECKLIST	Weekly	09/01/2011	09/21/2011	Flows very low due to low rainfall. All ok at lagoon.
2232000	0000142961	TANK DIESEL MAIN PS	PERFORM WEEKLY CHECKLIST	Weekly	09/01/2011	09/21/2011	Flows very low due to low rainfall. All ok at lagoon.
2232059	0000127622	PUMP SUBM 01	PERFORM WEEKLY CHECKLIST	Weekly	09/01/2011	09/21/2011	All ok this station.

### Facility Work Order Summary

WO #	Equipment #	Equipment Description	Activity Description	Maint. Freq	Scheduled Date	Completion Date	Comments
2231991	0000127620	PANEL TRANSFER 01 GENSET	PERFORM WEEKLY CHECKLIST	Weekly	09/01/2011	09/21/2011	Flows very low due to low rainfall. All ok at lagoon.
2232060	0000127623	PUMP SUBM 02	PERFORM WEEKLY CHECKLIST	Weekly	09/01/2011	09/21/2011	All ok this station.
2231999	0000142715	EYEWASH EMERGENCY	PERFORM WEEKLY CHECKLIST	Weekly	09/01/2011	09/21/2011	Flows very low due to low rainfall. All ok at lagoon.
2231992	0000127635	ENGINE DIESEL MAIN PS	PERFORM WEEKLY CHECKLIST	Weekly	09/01/2011	09/21/2011	Flows very low due to low rainfall. All ok at lagoon.
2231993	0000127636	PANEL CONTROL GENERATOR	PERFORM WEEKLY CHECKLIST	Weekly	09/01/2011	09/21/2011	Flows very low due to low rainfall. All ok at lagoon.
2231994	0000127638	PUMP SUBM #1	PERFORM WEEKLY CHECKLIST	Weekly	09/01/2011	09/21/2011	Flows very low due to low rainfall. All ok at lagoon.
2231995	0000127639	PUMP SUBM #2	PERFORM WEEKLY CHECKLIST	Weekly	09/01/2011	09/21/2011	Flows very low due to low rainfall. All ok at lagoon.
2232103	0000127617	METER LEVEL TAYOR ST.	PERFORM WEEKLY CHECKLIST	Weekly	09/01/2011	09/21/2011	New miltronics unit working good.. level normal.
2232104	0000127618	PUMP SUBM 01	PERFORM WEEKLY CHECKLIST	Weekly	09/01/2011	09/21/2011	New miltronics unit working good.. level normal.
2232105	0000127619	PUMP SUBM #2	PERFORM WEEKLY CHECKLIST	Weekly	09/01/2011	09/21/2011	New miltronics unit working good.. level normal.
2232106	0000142962	TAYLOR STREET MCC PANEL	PERFORM WEEKLY CHECKLIST	Weekly	09/01/2011	09/21/2011	New miltronics unit working good.. level normal.
2319368		Facility	TEST CRITICAL ALARMS		09/01/2011	09/29/2011	Test all high and low level critical alarms at each pump station and document that each was complete with a call from the alarm company. Al ok
2226298	0000142206	ALARM DIALER	ALARM DIALER	Monthly	09/01/2011	09/29/2011	ALARM DIALER WORKING NORMAL.
2226312		Facility	OHSA WORKPLACE SAFETY INS	OG15	09/01/2011	09/29/2011	taylor street lift station checked .. Tripping hazard removed by MCC panel. Issue resolved.
2226303	0000142715	EYEWASH EMERGENCY			10/17/2011	10/04/2011	replenish water and saline solution in emergency eyewash
2226299	0000142206	ALARM DIALER	ALARM DIALER	Monthly	10/03/2011	10/05/2011	DIALER WORKING NORMAL.
2319369		Facility	TEST CRITICAL ALARMS		10/03/2011	10/05/2011	Test all high and low level critical alarms at each pump station and document that each was complete with a call from the alarm company.
2226285	0000127635	ENGINE DIESEL MAIN PS	ENGINE DIESEL	Monthly	10/03/2011	10/19/2011	STARTED NORMAL DURING OUTAGE. CHECKED AND OK .
2232064	0000142963	METER LEVEL PROUT ST.	PERFORM WEEKLY CHECKLIST	Weekly	10/03/2011	10/26/2011	all working normal for this site.

### Facility Work Order Summary

WO #	Equipment #	Equipment Description	Activity Description	Maint. Freq	Scheduled Date	Completion Date	Comments
2232063	0000127623	PUMP SUBM 02	PERFORM WEEKLY CHECKLIST	Weekly	10/03/2011	10/26/2011	all working normal for this site.
2232062	0000127622	PUMP SUBM 01	PERFORM WEEKLY CHECKLIST	Weekly	10/03/2011	10/26/2011	all working normal for this site.
2232002	0000127620	PANEL TRANSFER 01 GENSET	PERFORM WEEKLY CHECKLIST	Weekly	10/03/2011	10/26/2011	Lift station operating normal. Flows up due to fall rains.
2232010	0000142715	EYEWASH EMERGENCY	PERFORM WEEKLY CHECKLIST	Weekly	10/03/2011	10/26/2011	Lift station operating normal. Flows up due to fall rains.
2232006	0000127639	PUMP SUBM #2	PERFORM WEEKLY CHECKLIST	Weekly	10/03/2011	10/26/2011	Lift station operating normal. Flows up due to fall rains.
2232005	0000127638	PUMP SUBM #1	PERFORM WEEKLY CHECKLIST	Weekly	10/03/2011	10/26/2011	Lift station operating normal. Flows up due to fall rains.
2232004	0000127636	PANEL CONTROL GENERATOR	PERFORM WEEKLY CHECKLIST	Weekly	10/03/2011	10/26/2011	Lift station operating normal. Flows up due to fall rains.
2232003	0000127635	ENGINE DIESEL MAIN PS	PERFORM WEEKLY CHECKLIST	Weekly	10/03/2011	10/26/2011	Lift station operating normal. Flows up due to fall rains.
2232008	0000142206	ALARM DIALER	PERFORM WEEKLY CHECKLIST	Weekly	10/03/2011	10/26/2011	Lift station operating normal. Flows up due to fall rains.
2232012	0000142960	MAIN MCC PANEL	PERFORM WEEKLY CHECKLIST	Weekly	10/03/2011	10/26/2011	Lift station operating normal. Flows up due to fall rains.
2232011	0000142961	TANK DIESEL MAIN PS	PERFORM WEEKLY CHECKLIST	Weekly	10/03/2011	10/26/2011	Lift station operating normal. Flows up due to fall rains.
2232009	0000114653	OUTPOST 5 PANEL BRUCE MINE SPS	PERFORM WEEKLY CHECKLIST	Weekly	10/03/2011	10/26/2011	Lift station operating normal. Flows up due to fall rains.
2232007	0000127640	METER LEVEL 01 MAIN PS	PERFORM WEEKLY CHECKLIST	Weekly	10/03/2011	10/26/2011	Lift station operating normal. Flows up due to fall rains.
2232107	0000127617	METER LEVEL TAYOR ST.	PERFORM WEEKLY CHECKLIST	Weekly	10/03/2011	10/26/2011	no new issues , all running normal.
2232109	0000127619	PUMP SUBM #2	PERFORM WEEKLY CHECKLIST	Weekly	10/03/2011	10/26/2011	no new issues , all running normal.
2232108	0000127618	PUMP SUBM 01	PERFORM WEEKLY CHECKLIST	Weekly	10/03/2011	10/26/2011	no new issues , all running normal.
2232110	0000142962	TAYLOR STREET MCC PANEL	PERFORM WEEKLY CHECKLIST	Weekly	10/03/2011	10/26/2011	no new issues , all running normal.
2426702		Facility	CALL OUT (EMERGENCY,ALARM	OG44	12/30/2015	10/31/2011	Filtrate Chlorine low alarm. Checked hypo system. all working normal. Cleared alarm and restarted plant. no issues. Acknowledged alarm and cleared it.
2226313		Facility	OHSA WORKPLACE SAFETY INS	OG15	10/03/2011	10/31/2011	Checked prout Lift station. Good.

### Facility Work Order Summary

WO #	Equipment #	Equipment Description	Activity Description	Maint. Freq	Scheduled Date	Completion Date	Comments
2426599		Facility	CALL OUT (EMERGENCY,ALARM)	OG44	11/20/2011	11/20/2011	SKID B SHUT DOWN WATCHDOG TIMED OUT. T 2 TANK. Checked skid and restarted unit to make water. watched T-2 tank fill. Recommend setting operational production to be no less then 3 l/s
2232067	0000142963	METER LEVEL PROUT ST.	PERFORM WEEKLY CHECKLIST	Weekly	11/01/2011	11/21/2011	Both pumps working normal no issues
2232066	0000127623	PUMP SUBM 02	PERFORM WEEKLY CHECKLIST	Weekly	11/01/2011	11/21/2011	Both pumps working normal no issues
2232065	0000127622	PUMP SUBM 01	PERFORM WEEKLY CHECKLIST	Weekly	11/01/2011	11/21/2011	Both pumps working normal no issues
2232013	0000127620	PANEL TRANSFER 01 GENSET	PERFORM WEEKLY CHECKLIST	Weekly	11/01/2011	11/21/2011	Flows normal all ok.
2232021	0000142715	EYEWASH EMERGENCY	PERFORM WEEKLY CHECKLIST	Weekly	11/01/2011	11/21/2011	Flows normal all ok.
2232014	0000127635	ENGINE DIESEL MAIN PS	PERFORM WEEKLY CHECKLIST	Weekly	11/01/2011	11/21/2011	Flows normal all ok.
2232015	0000127636	PANEL CONTROL GENERATOR	PERFORM WEEKLY CHECKLIST	Weekly	11/01/2011	11/21/2011	Flows normal all ok.
2232016	0000127638	PUMP SUBM #1	PERFORM WEEKLY CHECKLIST	Weekly	11/01/2011	11/21/2011	Flows normal all ok.
2232017	0000127639	PUMP SUBM #2	PERFORM WEEKLY CHECKLIST	Weekly	11/01/2011	11/21/2011	Flows normal all ok.
2232019	0000142206	ALARM DIALER	PERFORM WEEKLY CHECKLIST	Weekly	11/01/2011	11/21/2011	Flows normal all ok.
2232023	0000142960	MAIN MCC PANEL	PERFORM WEEKLY CHECKLIST	Weekly	11/01/2011	11/21/2011	Flows normal all ok.
2232022	0000142961	TANK DIESEL MAIN PS	PERFORM WEEKLY CHECKLIST	Weekly	11/01/2011	11/21/2011	Flows normal all ok.
2232018	0000127640	METER LEVEL 01 MAIN PS	PERFORM WEEKLY CHECKLIST	Weekly	11/01/2011	11/21/2011	Flows normal all ok.
2232020	0000114653	OUTPOST 5 PANEL BRUCE MINE SPS	PERFORM WEEKLY CHECKLIST	Weekly	11/01/2011	11/21/2011	Flows normal all ok.
2232111	0000127617	METER LEVEL TAYOR ST.	PERFORM WEEKLY CHECKLIST	Weekly	11/01/2011	11/21/2011	All ok at this station.
2232112	0000127618	PUMP SUBM 01	PERFORM WEEKLY CHECKLIST	Weekly	11/01/2011	11/21/2011	All ok at this station.
2232113	0000127619	PUMP SUBM #2	PERFORM WEEKLY CHECKLIST	Weekly	11/01/2011	11/21/2011	All ok at this station.
2232114	0000142962	TAYLOR STREET MCC PANEL	PERFORM WEEKLY CHECKLIST	Weekly	11/01/2011	11/21/2011	All ok at this station.
2226286	0000127635	ENGINE DIESEL MAIN PS	ENGINE DIESEL	Monthly	11/01/2011	11/24/2011	Tested generator under load all ok for 1 hour

### Facility Work Order Summary

WO #	Equipment #	Equipment Description	Activity Description	Maint. Freq	Scheduled Date	Completion Date	Comments
2226300	0000142206	ALARM DIALER	ALARM DIALER	Monthly	11/01/2011	11/25/2011	Dialer working normal and all ok.
2319370		Facility	TEST CRITICAL ALARMS		11/01/2011	11/25/2011	Test all high and low level critical alarms at each pump station and document that each was complete with a call from the alarm company. All working normally.
2226314		Facility	OHSA WORKPLACE SAFETY INS	OG15	11/01/2011	11/30/2011	Charles O'kane completed inspection no issues.
2226315		Facility	OHSA WORKPLACE SAFETY INS	OG15	12/01/2011	12/16/2011	Inspection show emergency light not working. Replaced battery and found it was ok. No other issues.
2226287	0000127635	ENGINE DIESEL MAIN PS	ENGINE DIESEL	Monthly	12/01/2011	12/16/2011	Checked oil and ran under load conditions all ok.
2226301	0000142206	ALARM DIALER	ALARM DIALER	Monthly	12/01/2011	12/16/2011	Checked high level float alarms, alarm dialer good.
2232034	0000142960	MAIN MCC PANEL	PERFORM WEEKLY CHECKLIST	Weekly	12/01/2011	12/21/2011	pump checks show no issues with pumps.
2232070	0000142963	METER LEVEL PROUT ST.	PERFORM WEEKLY CHECKLIST	Weekly	12/01/2011	12/21/2011	lift station in good working order when checked.
2232033	0000142961	TANK DIESEL MAIN PS	PERFORM WEEKLY CHECKLIST	Weekly	12/01/2011	12/21/2011	pump checks show no issues with pumps.
2232029	0000127640	METER LEVEL 01 MAIN PS	PERFORM WEEKLY CHECKLIST	Weekly	12/01/2011	12/21/2011	pump checks show no issues with pumps.
2232028	0000127639	PUMP SUBM #2	PERFORM WEEKLY CHECKLIST	Weekly	12/01/2011	12/21/2011	pump checks show no issues with pumps.
2232027	0000127638	PUMP SUBM #1	PERFORM WEEKLY CHECKLIST	Weekly	12/01/2011	12/21/2011	pump checks show no issues with pumps.
2232025	0000127635	ENGINE DIESEL MAIN PS	PERFORM WEEKLY CHECKLIST	Weekly	12/01/2011	12/21/2011	pump checks show no issues with pumps.
2232026	0000127636	PANEL CONTROL GENERATOR	PERFORM WEEKLY CHECKLIST	Weekly	12/01/2011	12/21/2011	pump checks show no issues with pumps.
2232069	0000127623	PUMP SUBM 02	PERFORM WEEKLY CHECKLIST	Weekly	12/01/2011	12/21/2011	lift station in good working order when checked.
2232024	0000127620	PANEL TRANSFER 01 GENSET	PERFORM WEEKLY CHECKLIST	Weekly	12/01/2011	12/21/2011	pump checks show no issues with pumps.
2232068	0000127622	PUMP SUBM 01	PERFORM WEEKLY CHECKLIST	Weekly	12/01/2011	12/21/2011	lift station in good working order when checked.
2232030	0000142206	ALARM DIALER	PERFORM WEEKLY CHECKLIST	Weekly	12/01/2011	12/21/2011	pump checks show no issues with pumps.
2232031	0000114653	OUTPOST 5 PANEL BRUCE MINE SPS	PERFORM WEEKLY CHECKLIST	Weekly	12/01/2011	12/21/2011	pump checks show no issues with pumps.
2232032	0000142715	EYEWASH EMERGENCY	PERFORM WEEKLY CHECKLIST	Weekly	12/01/2011	12/21/2011	pump checks show no issues with pumps.

### Facility Work Order Summary

WO #	Equipment #	Equipment Description	Activity Description	Maint. Freq	Scheduled Date	Completion Date	Comments
2232115	0000127617	METER LEVEL TAYOR ST.	PERFORM WEEKLY CHECKLIST	Weekly	12/01/2011	12/21/2011	All normal at this station.
2232117	0000127619	PUMP SUBM #2	PERFORM WEEKLY CHECKLIST	Weekly	12/01/2011	12/21/2011	All normal at this station.
2232116	0000127618	PUMP SUBM 01	PERFORM WEEKLY CHECKLIST	Weekly	12/01/2011	12/21/2011	All normal at this station.
2232118	0000142962	TAYLOR STREET MCC PANEL	PERFORM WEEKLY CHECKLIST	Weekly	12/01/2011	12/21/2011	All normal at this station.
2319371		Facility	TEST CRITICAL ALARMS		12/01/2011	12/22/2011	Test all high and low level critical alarms at each pump station and document that each was complete with a call from the alarm company.

**APPENDIX C**

**CERTIFICATE OF APPROVAL**

CERTIFICATE OF APPROVAL

SEWAGE

NUMBER 3-0770-95-006

Page 1 of 2

The Corporation of the Town of Bruce Mines  
P.O. Box 220, 56 Taylor Street  
Bruce Mines, Ontario  
P0R 1C0

*You have applied in accordance with Section 53 of the Ontario Water Resources Act for approval of:*

Storm sewers and appurtenances to be constructed in the Town of Bruce Mines, as follows:

<u>STREET</u>	<u>FROM</u>	<u>TO</u>
Tarbutt Street to	approx. 8 m W. of Prout Street	approx. 58 m E. of Crawford Street (Outlet Little Jordan Creek)

including stub storm sewers, catchbasin leads and catchbasins and storm service drains from the main sewer to the street line, all in accordance with the following documents, namely, final plans and specifications prepared by Tulloch & Trivers Limited, Consulting Engineers, and all additional stub storm sewers, catchbasin leads and catchbasins from the main sewer to the street line, not included in the above final plans and specifications as may be approved by the operating authority in the future.

*You are hereby notified that this approval is issued subject to the terms and conditions outlined below:*

**TERMS AND CONDITIONS**

1. The operating authority shall not approve any additional stub storm sewers, catchbasin leads and catchbasins and storm service drains from the main sewer to the street line, not included in the documents referred to above unless it has reviewed the hydraulic capacity of the downstream storm sewer collection system and the sewage treatment works serving them, if any, and has concluded that the additional stub storm sewers, catchbasin leads and catchbasins and storm service drains from the main sewer to the street line, together with all existing and previously approved stub storm sewers, catchbasin leads and catchbasins and storm service drains from the main sewer to the street line will not overload either the downstream storm sewer collection system or the sewage treatment works and has recorded its review and conclusion in writing. This record shall be maintained by the operating authority and shall be summarized in a yearly report to be sent to the District Manager of the Ministry's District Office by February 15th of the following calendar year in which the records were collected.

*The reasons for the imposition of these terms and conditions are as follows:*

1. To ensure that all proposed storm sewer connections, including future connections, will be served adequately by the downstream storm sewer collection system and will be within the treatment capacity of the downstream sewage treatment works both hydraulically and in terms of any



effluent requirements.

CERTIFICATE OF APPROVAL  
SEWAGE  
NUMBER 3-0770-95-006  
Page 2 of 2

In accordance with Section 100 of the Ontario Water Resources Act, R.S.O. 1990, Chapter 0.40, as amended, you may by written notice served upon me and the Environmental Appeal Board within 15 days after receipt of this Notice, require a hearing by the Board. Section 101 of the Ontario Water Resources Act, provides that the Notice requiring the hearing shall state:

- 1.The portions of the approval or each term or condition in the approval in respect of which the hearing is required, and;
- 2.The grounds on which the applicant intends to rely at the hearing in relation to each portion appealed.

*The Notice should also include:*

- 3.The name of the appellant;
- 4.The address of the appellant;
- 5.The Certificate of Approval number;
- 6.The date of the Certificate of Approval;
- 7.The name of the Director;
- 8.The municipality within which the sewage works are located;

*And the Notice should be signed and dated by the appellant.*

*This Notice must be served upon:*

The Secretary,  
Environmental Appeal Board,  
*Act*,  
112 St. Clair Avenue West,  
Suite 502,  
Toronto, Ontario.  
M4V 1N3

AND

The Director,  
Section 53, *Ontario Water Resources*  
  
Ministry of Environment and Energy,  
250 Davisville Avenue, 3rd Floor,  
Toronto, Ontario.  
M4S 1H2

*The above noted sewage works are approved under Section 53 of the Ontario Water Resources Act.*

*DATED AT TORONTO this 27th day of June, 1995.*

\_\_\_\_\_  
M. Dhalla, P. Eng.,  
Director  
Section 53  
*Ontario Water Resources*

*Act*

HV/ld

Attn.: -K. Vasey, Clerk, Town of Bruce Mines  
cc: -M. D. Thompson, P. Eng., Tulloch & Trivers Limited  
-District Manager, MOEE Sault Ste. Marie District Office

## Town of Bruce Mines

XXXX

sanitary sewers, forcemain, sewage pumping station and facultative lagoon to be constructed in the Town of Bruce Mines as follows:

<u>STREET</u>	<u>FROM</u>	<u>TO</u>
<u>SANITARY SEWERS</u>		
Qunicy St.	Pilgrim St.	Crawford St.
Crawford St.	Approx. 85m north of Atlantic St.	Atlantic St.
Prout St.	Quincy St.	Helca St.
Atlantic St.	Pilgrim St.	Crawford St.
Calumet St.	Pilgrim St.	Prout St.
Helca St.	Pilgrim St.	Prout St.
Bruce Bay Rd.	Helca St.	Approx. 235m south of Helca St.

sewage pumping station located in the Calumet St. right-of-way, east of Prout St. and comprising of:

- prefabricated fibreglass reinforced plastic (FRP) wet well;
  - two (2) submersible sewage pumps (1 duty and 1 standby) each rated at 5.6 L/s at 7.3m TDH;
  - ultrasonic liquid level sensor;
- .....2

22nd

November 1990

Attn : L. Doggett, Clerk, Town of Bruce Mines  
cc : R. Hore, MOE NE, Reg. Dir.  
Marshall Macklin Monaghan Ltd.

NS/pm

- piping, electrical and control system;
- connection to existing 60 kW diesel generator

Forcemains

<u>Street</u>	<u>From</u>	<u>To</u>
Prout St.	Pumping Station on Calumet St.	Quincy St.
Quincy St.	Prout St.	Crawford St.

modification to the existing main sewage pumping station, located approximately 18m south of Highway 17 and approximately 24m east of Huron Street, and consisting of:

- replacement of existing dry well with a prefabricated fibreglass reinforced plastic (FRP) wet well pumping station of 3.05m diameter;
- two (2) submersible sewage pumps (1 duty and 1 standby) each rated at 27 L/s at 32m TDH;
- piping, electrical and control systems.

Forcemains

<u>Street</u>	<u>From</u>	<u>To</u>
Highway No. 17	Main Sewage Pumping Station	Cunningham St.
Cunningham St.	Highway No. 17	King St.
King St.	Cunningham St.	Highway No. 561
Easement	Highway No. 561, approx. 61m north of Highway 17	Highway No. 561
Highway No. 561	Easement	Sewage treatment works

An additional facultative lagoon, located adjacent to the east berm of the existing facultative lagoon, with an effective cell volume of approximately 50,100m<sup>3</sup>, surface area 3.34ha, and treatment capacity between the existing and new lagoon, for approximately 567m<sup>3</sup>/d average flow,

including all interconnecting pipework, inlet and outlet works, outfall to and rerouting of approximately 70m of Sucker Creek.

All in accordance with the "Sewerage Works Upgrading Study for the Corporation of the Town of Bruce Mines" report dated August 1989 and prepared by Marshall Macklin Monaghan Limited, Consulting Engineers, at an estimated cost, including engineering and contingencies, of THREE MILLION FIVE HUNDRED THOUSAND DOLLARS (\$3,500,000.00) subject to the following special terms and conditions which are considered necessary by the Director.

SPECIAL TERMS AND CONDITIONS

1. For the purpose of this Certificate of Approval:

- (1) "average concentration" means the arithmetic mean of the concentration of all daily discharges sampled or measured, or both, during the period of operation upon which the report is based;
- (2) "average loading" means the arithmetic mean of the total mass of all daily discharges sampled or measured, or both, during the period of operation upon which the report is based;
- (3) "BOD5" means total five day biochemical oxygen demand; (non-inhibited);
- (4) "Certificate" means the entire within Certificate of Approval issued in accordance with Section 24 of the Ontario Water Resources Act and includes its schedules, if any;
- (5) "Director" means any Ministry employee within the Approvals and Engineering Division of the Ministry appointed by the Minister pursuant to Section 4 of the Ontario Water Resources Act as a Director for the purposes of Sections 6, 24, 25, 26 and 27 of said Act;
- (6) "District Officer" means the District Officer, of the Sudbury District Office of the Ontario Ministry of the Environment, Northeastern Region;
- (7) "grab sample" means a volume of effluent of at least 100 millilitres which is collected over a period not exceeding fifteen minutes and immediately transferred to an appropriate laboratory sample container;
- (8) "kg/d" means kilograms per day;
- (9) "m<sup>3</sup>/d" means cubic metres per day;
- (10) "mg/L" means milligrams per litre;
- (11) "Ministry" means the Ontario Ministry of the Environment;
- (12) "operating authority" means the Ministry of Environment, Utility Operations, Northeastern Region;
- (13) "Owner" means the Town of Bruce Mines and includes its successors and assignees;
- (14) "Provincial Officer" means any Officer or employee of the Ministry designated in writing by the Minister as a Provincial Officer within the meaning of the Ontario Water Resources Act;
- (15) "Regional Director" means the Regional Director of the Northeastern Region of the Ministry;
- (16) "works" means the facility described in the Owner's application, this Certificate and in the supporting documentation referred to herein, to the extent approved by this Certificate;

2. The Owner shall not commence construction of the works or allow its commencement until final detailed design drawings, specifications and engineer's report containing the detailed design calculations have been submitted to the Director and the Director has confirmed in writing his approval of them.
3. Requirements specified in this Certificate are minimum requirements under Section 24 of the Ontario Water Resources Act, and do not abrogate the need to take all steps to avoid violating the provisions of applicable legislation.
4. The requirements of this certificate are severable. If any requirement of this certificate, or the application of any requirement of this certificate to any circumstance, is held invalid, the application of such requirement to other circumstances and the remainder of this certificate shall not be affected thereby.
5. The owner must ensure compliance with all the terms and conditions of this certificate. Non-compliance constitutes a violation of the Ontario Water Resources Act and is grounds for enforcement.
6. The owner shall furnish to the Regional director, any information which the Regional Director may request pursuant to Section 31 of the Ontario Water Resources Act, and copies of any records required to be kept by this Certificate.
7. The owner shall notify the Director and the Regional Director in writing of any of the following changes within 30 days of the change occurring:
  - a) change of owner or operating authority, or both;
  - b) change of address or address of new owner.
8. The owner shall take all reasonable steps to minimize any adverse impact to surface or ground waters resulting from non-compliance with the effluent requirements specified in this Certificate including, but not limited to, such accelerated or additional monitoring as necessary to determine the nature and impact of the discharge in non-compliance.
9.
  - 1) The owner shall prepare and make available for inspection by Ministry employees upon request, a complete set of drawings within one year of substantial completion of the sewage works which drawings shall show the sewage works as constructed at that time.
  - 2) A complete set of the constructed drawings, incorporating any amendments made from time to time, shall be kept by the owner at the administration building of the sewage works as long as the sewage works is kept in operation.

Operation and Maintenance Conditions

10. 1) The operating authority shall ensure that at all times, the sewage works and related equipment and appurtenances which are installed or used to achieve compliance with this Certificate are properly operated and maintained. Proper operation and maintenance includes effective performance, adequate funding, adequate operator staffing and training and adequate laboratory and process controls, including appropriate quality assurance and quality control procedures.
- 2) The operating authority shall ensure that adequate equipment and material are kept on hand, maintained and kept in good repair for immediate use in the event of upset conditions and equipment breakdowns in the sewage works and spills of raw, partly treated sewage, sludge and chemicals, and that personnel are trained in its use and the methods and procedures to be employed.

Performance

11. 1) The sewage treatment works shall be designed, constructed and operated such that the concentrations and total loadings of the materials named below as effluent parameters shall not be exceeded in the effluent from the sewage works, calculated in accordance with Subsection (2):

<u>Effluent Parameter</u>	<u>Non-Compliance Limits</u>	
	<u>Effluent Concentrations</u>	<u>Effluent Waste Loadings</u>
BOD <sub>5</sub>	25 mg/L	259 kg/day
Suspended Solids	25 mg/L	259 kg/day

Note : the waste loading limits are based on ten (10) day discharge period of the waste stabilization pond contents.

- 2)
  - i) Non-compliance with respect to effluent concentration of BOD<sub>5</sub>, and Suspended Solids is deemed to have occurred when the arithmetic mean of a minimum of three (3) consecutive samples taken during discharge period as part of routine sampling program by the operating authority and supplemented by spot sampling by the Ministry staff as necessary, exceeds the corresponding concentration set out in Subsection (1).
  - ii) Non-compliance with respect to waste loadings is deemed to have occurred when the average concentration of either BOD<sub>5</sub>, or Suspended Solids, multiplied by the average daily flow over the discharge period exceeds the corresponding waste loading set out in Subsection (1).

12. Notwithstanding condition No. 11, the discharge shall not contain oil or other substance in amounts sufficient to create a visible film or when on the receiving waters and shall be essentially free of floating and settleable solids.
13.
  - 1) The waste stabilization pond has been designed and approved to treat sewage at an average daily flow of 567m<sup>3</sup>/d.
  - 2) For the purposes of this Certificate and Subsection 66 (3) of the Ontario Water Resources Act, the introduction of sewage flows into the waste stabilization ponds in excess of the average daily flow for any consecutive period of time greater than 183 days is not approved under this Certificate.
14.
  - 1) The sewage works shall be operated on a semi-annual discharge basis with the effluent discharge to occur over a ten (10) day period commencing not earlier than May 1 or terminating later than May 15 in spring and commencing not earlier than November 1 or terminating later than November 15 in fall.
  - 2) The Regional Director may, in writing, agree to or direct that the rate and period of discharge be altered within the physical capability of the sewage works to allow the discharge to coincide with the period of peak flow and maximum dilution in the receiving watercourse.
  - 3) The operating authority shall notify the Regional Director at least twenty four (24) hours prior to the commencement of the sewage works effluent discharge.
15. The operating authority shall ensure that the following monitoring program is carried out:
  - 1) Sampling locations shall be established to the satisfaction of the Regional Director prior to the commencement of operation of the works. Any of these sampling locations may only be changed or abandoned and new locations may be added following commencement of operation if, in the opinion of the Regional Director, it is necessary to do so to ensure representative samples are being collected.
  - 2) Subject to Subsection (1), grab samples shall be collected from each cell of the waste stabilization pond during its discharge.
  - 3) The collection of samples noted in Subsection (2) shall take place as follows:
    - i) A grab sample is to be taken on the first and last day of the discharge period and another grab sample for every 0.5 metre of drawn-down in the pond cells.
    - ii) The sample shall be refrigerated at 4°C throughout the collection period and until analyzed in the laboratory.
    - iii) At least one litre of sample from each sampling location, shall be sent as soon as practicable to a reputable laboratory, acceptable to the Regional Director.



- 4) The samples collected pursuant to Subsection (2) shall be analyzed for:  
  
BOD<sub>5</sub>, Suspended Solids, Total Phosphorous, Ammonia plus Ammonium Nitrogen and Hydrogen Sulphide, using analytical procedures described in Standard Methods for the Examination of Water and Wastewater, Latest edition.
  - 5) The total discharge from each cell shall be estimated and recorded using an established engineering technique acceptable to the Regional Director, so that the effluent waste loading can be calculated.
16. Analytical results from Condition No. 15 (Subsection No. 4) shall be reported to the Regional Director within 90 days of collection of the sample or with such longer period as the Regional Director may agree upon.
17. 1) The operating authority shall submit an annual report to the Regional Director on the performance of the sewage works.
- 2) The first report referred to in Subsection (1) shall be submitted within one year and 90 days following the commencement of operation of the sewage works approved in this Certificate and shall report on the first 12 months or such operation. Each subsequent report shall cover subsequent 12 month period and shall be submitted within 90 days of the completion of the 12 month period being reported upon.
- 3) Each annual report shall contain at least the following information:
- (i) an executive summary;
  - (ii) a tabulation of all sample results including how and where the sample was taken;
  - iii) a tabulation of discharge volumes, including average daily flows for periods reported;
  - iv) a comprehensive interpretation of sewage works effluent loadings and concentrations data for the reporting period;
  - v) an overview of the sludge disposal program including tabulation of quantity of sludge and the disposal areas used during the period being reported upon, together with an outline of the proposed sludge handling methods and disposal areas to be utilized over the next reporting period;
  - vi) a description of any emergency or upset conditions which occurred during the period being reported upon.

Town of Bruce Mines  
Box 220  
56 Taylor Street  
Bruce Mines, Ontario  
P0S 1C0

You are hereby notified that final Certificate of Approval No. 3-0019-90-006 has been issued to you subject to the conditions outlined therein.

The reasons for the imposition of these conditions are as follows:

1. Condition No. 1 is included to define all the terms and to assist in making the meaning of the belowstated conditions clear.
2. Condition No. 2 is included to make the applicant aware that the Director approves in principle the proposed works and is of the opinion that they may be carried out on the basis of sound engineering and environmental principles, notwithstanding that sufficient detailed designs of the works have not been submitted to the Director for a final technical determination.

It is in the public interest to issue this conceptual approval in order that the applicant may know that the Director approves of the general concept of the proposed works before the applicant is put to the expense of preparing detailed plans, specifications and an engineer's report and make whatever other arrangements necessary in connection with this undertaking sufficient for the Director to give an approval to construct.

3. Condition No. 3 is included to emphasize that the issuance of the approval does not diminish the duty of the owner to use all reasonable care in the construction, maintenance and operation of the sewage works, including a duty to mitigate any adverse impacts resulting from any action which results in non-compliance with this Certificate of Approval.
4. Condition No. 4 is included to clarify that the requirements as set out in this Certificate are severable.
5. Condition No. 5 is included to clarify that the owner has to comply with all the terms and conditions of the Certificate.
6. Condition Nos. 6 and 7 are included to allow the Regional Director to obtain the necessary information relating to the construction, ownership, operation and maintenance of the sewage works.

7. Condition No. 8 is included to clarify the owner's responsibilities pertaining to the mitigation of adverse impacts in case of non-compliance with the effluent requirements.
8. Condition No. 9 is included to ensure that a complete set of drawings is available to facilitate operation of the sewage works and for inspection by Ministry personnel.
9. Condition No. 10 is imposed to ensure that the sewage works is properly operated and maintained and that the owner can deal with contingency and/or emergency situations.
10. Condition Nos. 11, 12 and 14 are imposed on the effluent criteria related to BOD<sub>5</sub> and Suspended Solids concentrations in order to minimize adverse effects of oxygen demanding material on dissolved oxygen concentration in the receiving waters.
11. Condition No. 13 is imposed to ensure that the average daily flow rate is within the approved capacity of the sewage works and in order to alert the owner for the need to initiate sewage works expansion.
12. Condition Nos. 15, 16 and 17 are imposed to ensure that all pertinent data are available for the evaluation of the performance of the sewage works, and that sludge disposal program is in compliance with the Provincial Sludge Utilization Guidelines and consistent with any requirements of Part V, Environmental Protection Act.

You may by written notice served upon me and the Environmental Appeal Board within 15 days after receipt of this Notice, require a hearing by the Board. Section 63 of the Ontario Water Resources Act, R.S.O. 1980, C. 361, as amended, provides that the Notice requiring the hearing shall state the portions of each term or condition in the approval in respect of which the hearing is required and the grounds on which you intend to rely at the hearing.

This Notice should be served upon:

The Secretary,  
Environmental Appeal Board,  
112 St. Clair Ave. West,  
5th Floor,  
Toronto, Ontario.  
M4V 1N3

AND

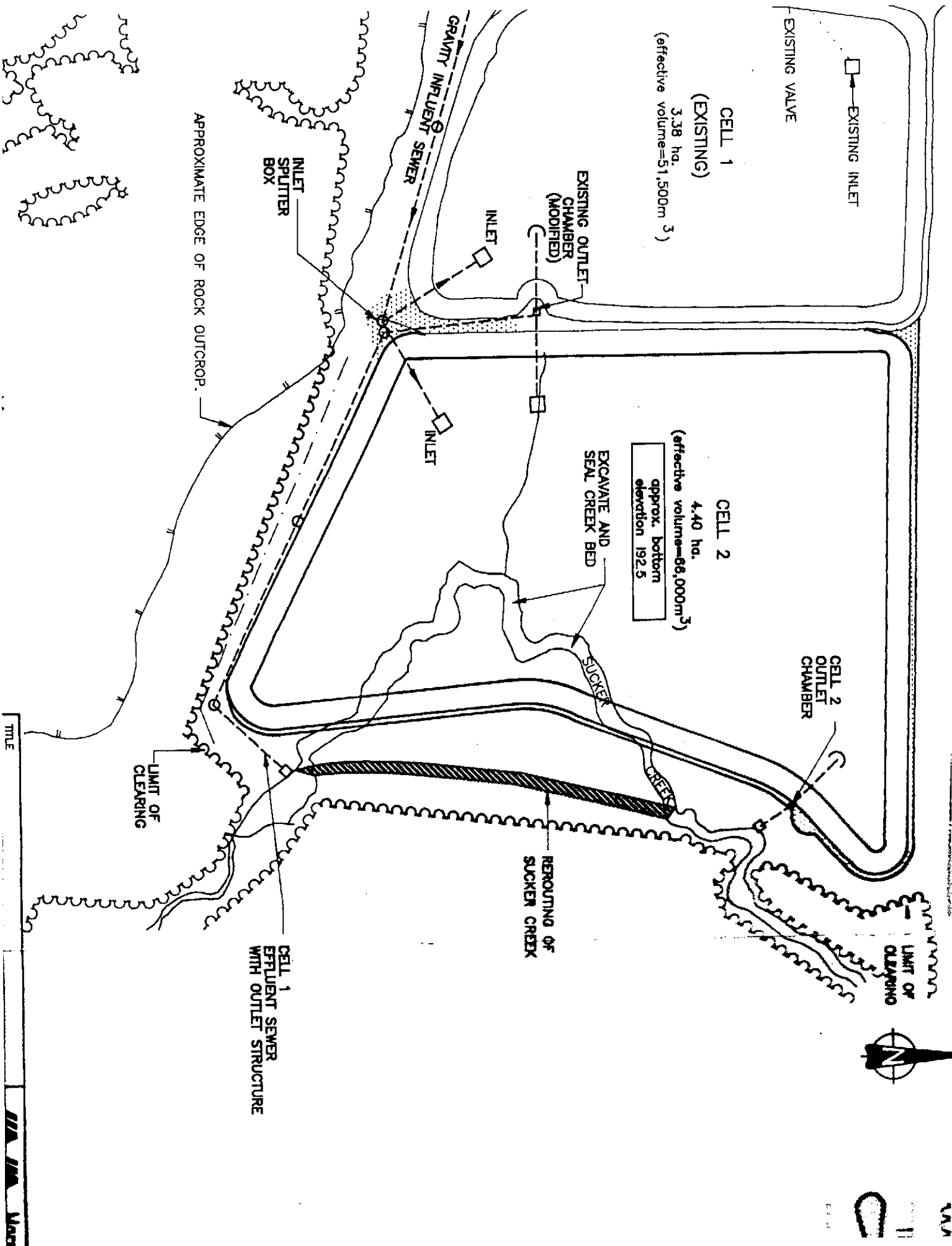
The Director,  
Section 24, O.W.R. Act,  
Ministry of the Environment,  
250 Davisville Avenue,  
Toronto, Ontario.  
M4S 1H2

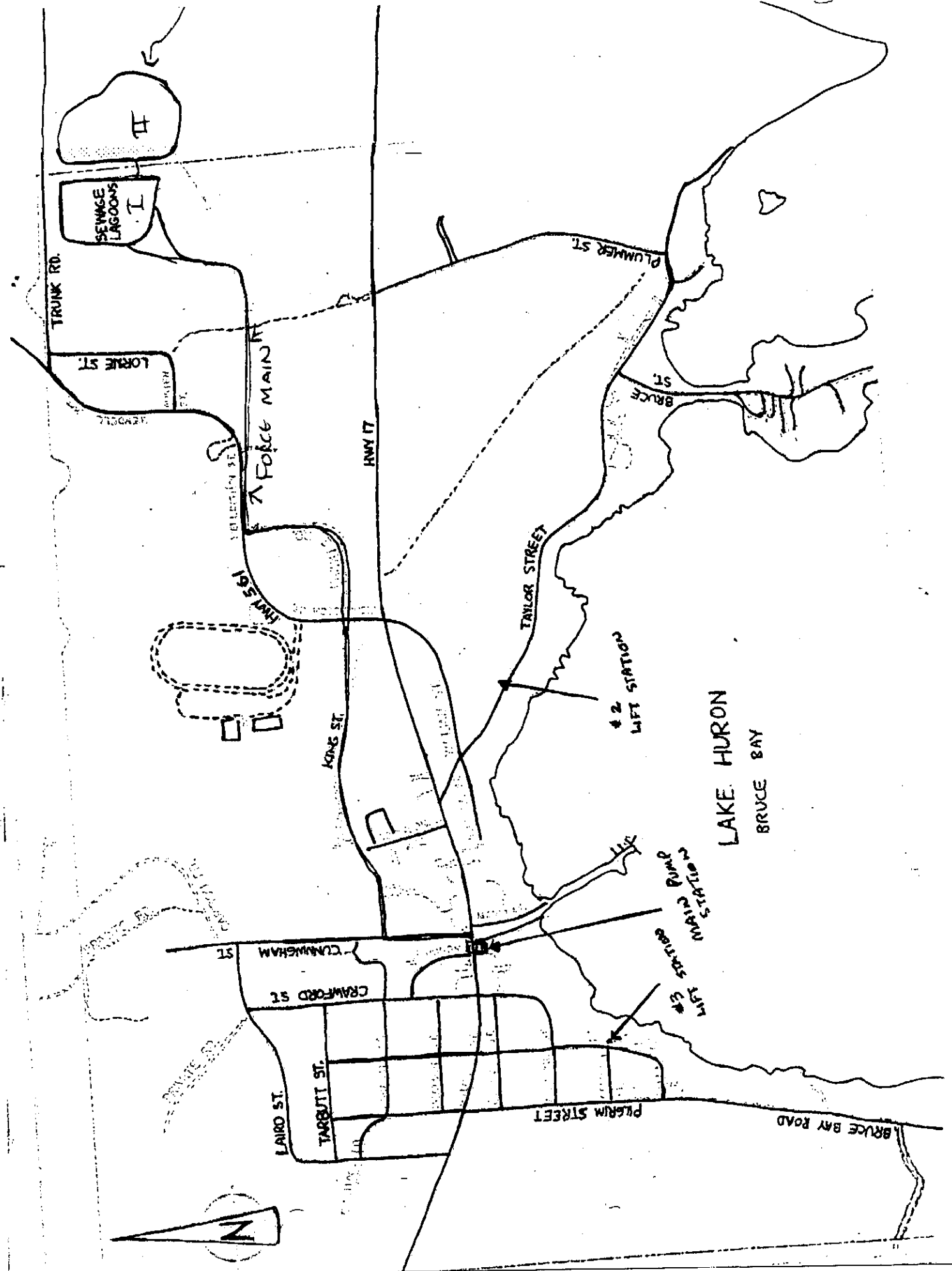
DATED at Toronto this

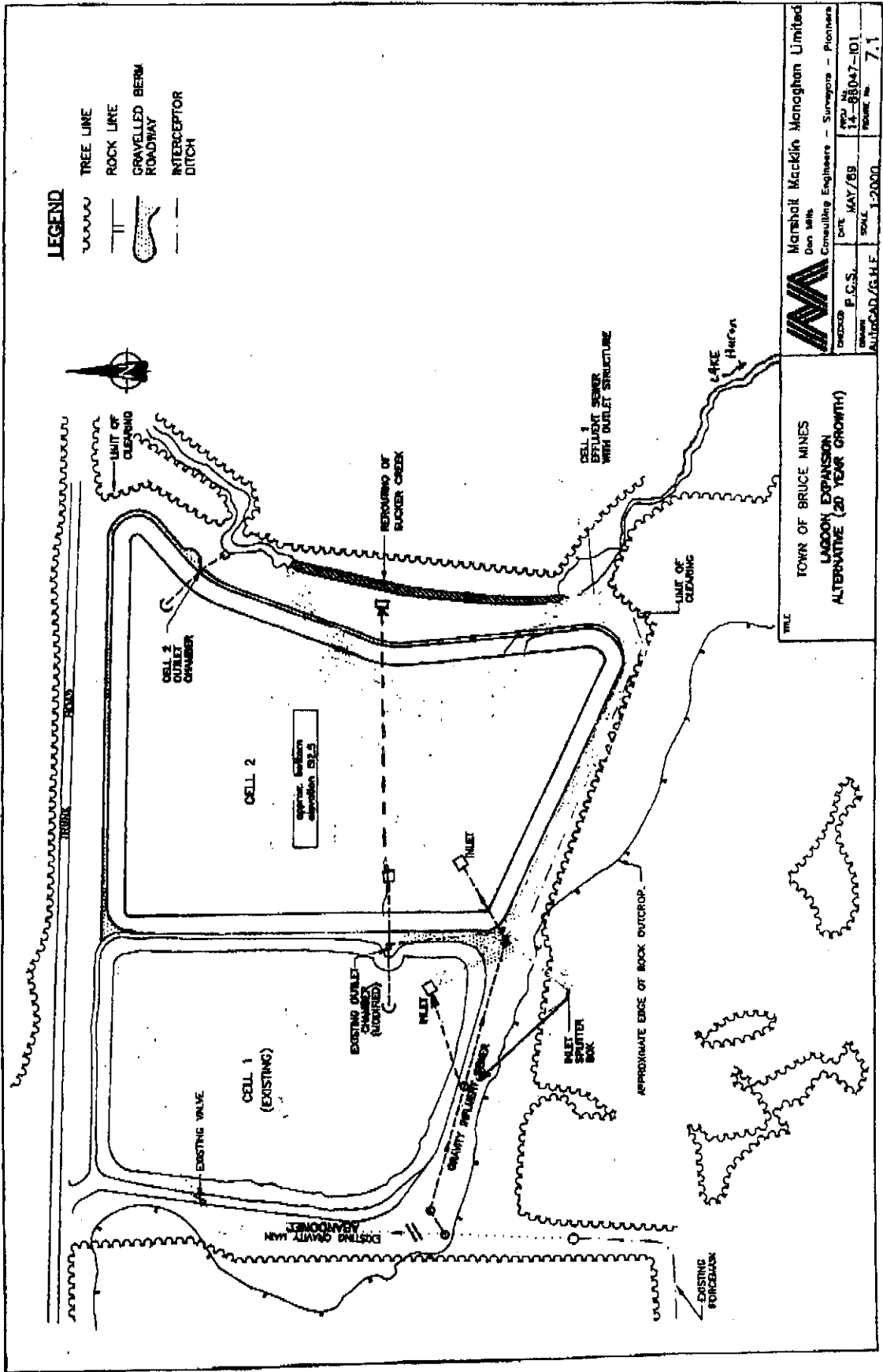
day of

---

Director,  
Section 24, O.W.R. Act,  
Ministry of the Environment.








TITLE

TOWN OF BRUCE MINES  
LAGOON EXPANSION  
ALTERNATIVE (20 YEAR GROWTH)


 Marshall Macklin Managhan Limited  
 Don Williams  
 Consulting Engineers - Surveyors - Planners  
 P.C.S.S.  
 DATE MAY/89  
 SCALE 1:2000  
 PROJECT NO. 14-88047-01  
 DRAWING NO. 7.1

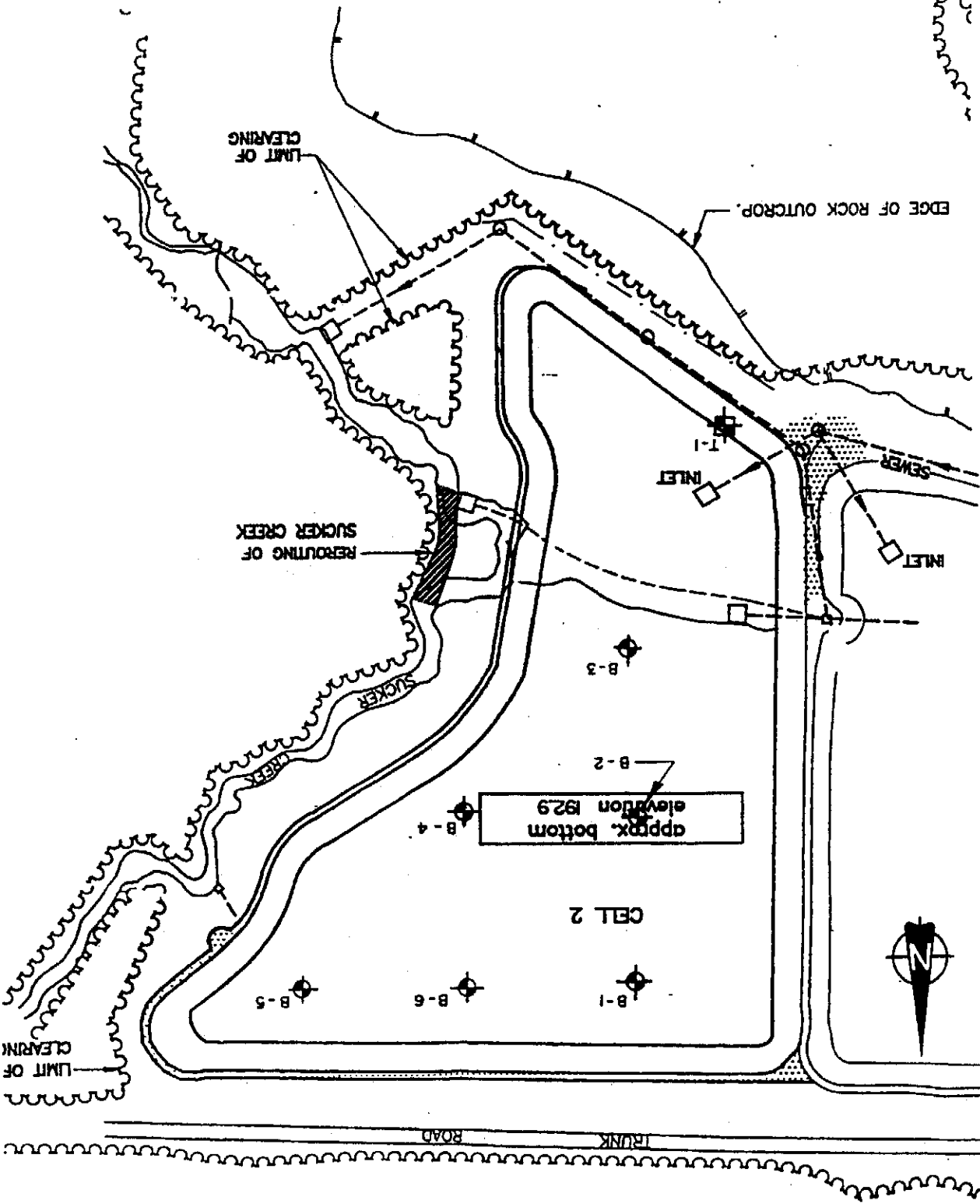
# PLOT PLAN

PREVIOUS BORING BY OTHERS, 1989

TEST PIT FOR THIS INVESTIGATION

## LEGEND:

REFERENCE: PLAN BASE PROVIDED BY MARSHALL MACKIN MONAGHAN LIMITED,  
ENTITLED, TOWN OF BRUCE MINES, LAGOON EXPANSION ALTERNATIVE  
( 18 YEAR GROWTH )



FILE F-891A

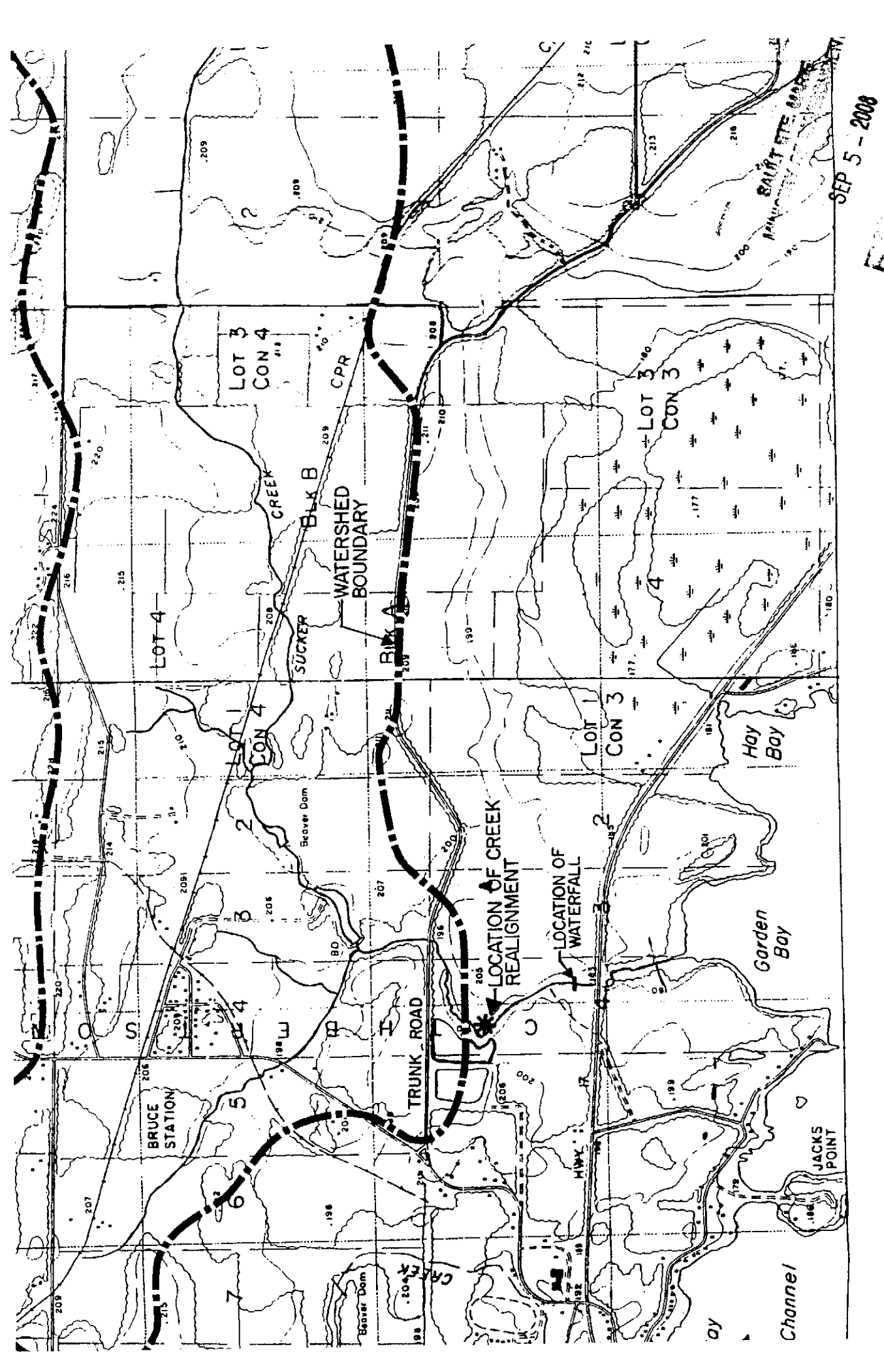
BY E.M. DATE 01/23/92

CHECKED BY DATE

REVISIONS

BY DATE

PLATE OF



SEP 5 - 2008

**AMN**

Title: TOWN OF BRUCE MINES FISHERIES COMPENSATION PLAN  
 WATERSHED BOUNDARY OF SUCKER CREEK (ABOVE MEANDER)

Checked by: J.I.  
 Drawn: B.K.